



IGNIS
LikeNoOther







LIKE NO OTHER

WHAT DRIVES YOU?

Your time is now.

Use it to design, to innovate, to grow.

Create a space for yourself.

Map your life and follow your own road.

Customise your experiences, and tell
your own story.

Be like no other.

Original. Independent.

The new generation.

IGNIS. Like No Other.





LEADING WITH STRENGTH

The IGNIS has a powerful and strong road presence, with broad shoulders, chunky wheels, and a front grille as distinctive as you are.

EMBRACE YOUR ORIGINALITY

With LED projector headlamps set into the clamshell hood, and LED DRL with chic chrome finish, the IGNIS helps you show your true colours, with conviction.

THE PROFILE OF AN INNOVATOR

The IGNIS holds your position on the road firmly, with its four wheels planted on the extreme corners of the car – a stance that is immovable, just like your resolve to be a trail-blazer.

The Suzuki Progressive Triad, unique proportions, expressive wheel arches, and black alloy wheels all defy traditional design – just like you.









EXPRESSIVE OUTSIDE. IMPRESSIVE INSIDE.

The IGNIS cockpit experience is every bit as original and customised as you would expect. Its floating dashboard, dual tones, and elevated infotainment system give you the level of design control you need, and the right amount of style to pull off anything.

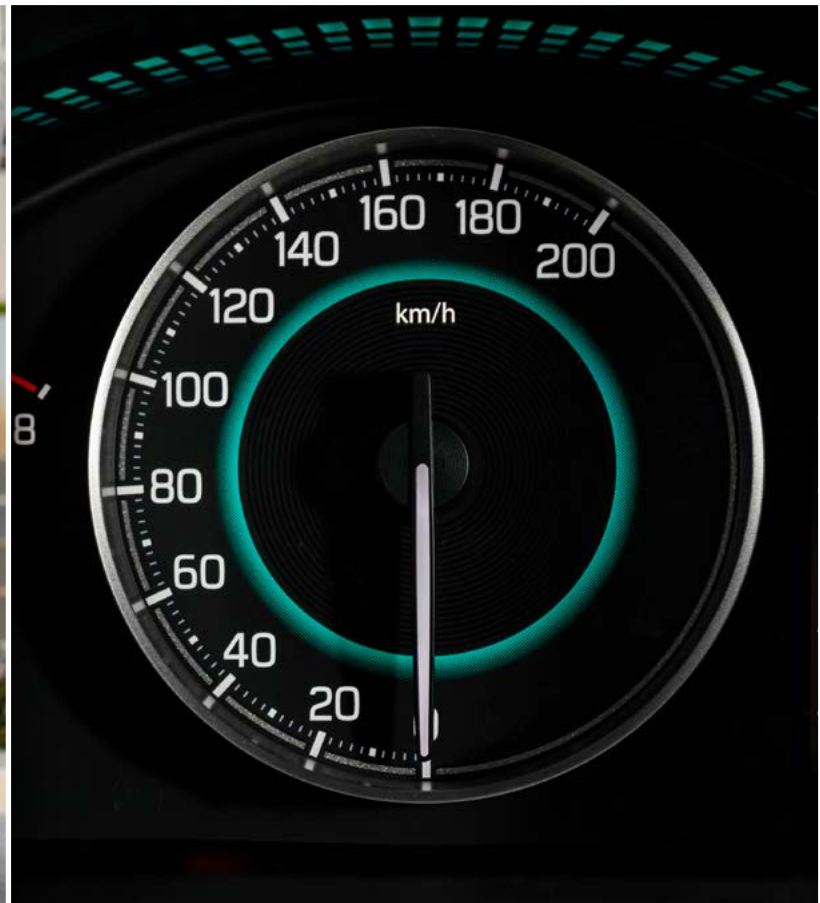
The dynamic look of the switchgear, complementing body-colour accents and carbon fibre styled AC louvres give you a driving experience that is as varied and multi-faceted as your own personality.

- 7" infotainment system with smartphone connectivity (GLX only)
- Power front and rear windows
- Electric power steering
- Climate control (GLX only)

TECH ADVANCEMENT AT YOUR FINGERTIPS

The IGNIS doesn't only look like iconic innovation, it also features advanced technology in all its internal and external functions. You have a push start, automatic climate control, reverse parking sensors, and a range of other convenient and high-tech features to keep you travelling down your road.

- Reverse parking-sensors (GLX only)
- Electronic adjustable door mirrors



SYNCHRONISE YOURSELF

7" INFOTAINMENT SYSTEM WITH SMARTPHONE CONNECTIVITY AND REVERSE CAMERA

A 7-inch touchscreen display enables intuitive operation of multimedia features including audio, hands-free phone, and smartphone integration. Features can be selected from the four main operating modes - Listen, Call, Drive and Connect. The 7" touchscreen infotainment system, with smartphone connectivity and reverse camera, works with Apple CarPlay, Android Auto™ and Mirrorlink™.* By connecting your compatible iPhone via USB, Apple CarPlay allows you to make phone calls, access your music, send and receive messages, and get directions all by voice command or a tap on the audio display. Android Auto puts Google Maps™, Google™ Search and other Google services at the driver's fingertips in a non-distracting way. Mirrorlink™ lets various applications on your smartphone appear on the vehicle's touchscreen display, allowing you to access your smartphone's features.

*Apple CarPlay is available in the countries listed at the following link:
<http://www.apple.com/ios/feature-availability/#applecarplay-applecarplay>

*For more details including iPhone models compatible with Apple CarPlay, see:
<http://www.apple.com/ios/carplay/>

*Apple, Apple CarPlay and iPhone are trademarks of Apple Inc., registered in the U.S. and other countries.

*Android Auto is available in the countries listed at the following link:
<https://www.android.com/auto/#hit-the-road>

*Requires the Android Auto app on Google Play and an Android compatible smartphone running Android™ 5.0 Lollipop or higher:
<https://support.google.com/androidauto/#6140477>

*Android and Android Auto are trademarks of Google LLC.

*MirrorLink™ Is compatible with the smartphones listed at the following link:
<https://cert.mirrorlink.com/ProductListing/> MirrorLink™ is a registered trademark of the Car Connectivity Consortium LLC.



SPACE FOR EVERYTHING. UP FOR ANYTHING.

Innovation and adventure always need a little more space. With generous headroom and legroom, 60-40 split seats, and convenient utility spaces, the IGNIS is designed with the comfort of passengers and changes in storage requirements in mind.





A STERLING PERFORMANCE

The IGNIS boasts an efficient but powerful 1.2ℓ engine, getting you from A-B and further in style, at pace, without denting your budget.

The light weight of the engine improves fuel efficiency through better combustion, lower engine friction, and lower emissions. Delivering 61 kW of refined power at 6000 r/min, and 113 Nm at 4200 r/min, this engine ensures that you drive the way you live: energetically, responsively, and always forward-moving.



21:28 16
Instant fuel
economy
0 20 40
A 38.9
58
E



SHIFTING YOUR PERSPECTIVE

This dynamo gives you an effortless, smooth, and inspiring drive, whether you choose a manual or an automated manual transmission (only available in GLX).





A SECURE JOURNEY

Key safety features come standard across the IGNIS range, so whatever your preference, you're protected. With a standard alarm and immobiliser, safety comes standard with the IGNIS.

The Suzuki safety shield includes TECT body structure that absorbs and disperses energy from an impact, dual airbags, ABS with EBD, and front seatbelts with pre-tensioners and force limiters.

It includes the ISOFIX child seat restraint system that adheres to international standards, while a pedestrian-friendly bonnet, collapsible wipers, and impact-absorbing headlamps ensure anyone inside or outside the car is safer in an accident.

MAJOR SPECIFICATIONS

Steering	RHD
Number of doors	5-door
Engine	Petrol
	1.2ℓ
Drive system	2WD

DIMENSIONS

Overall length (mm)		3 700
Overall width (mm)		w/o wheel arch extensions: 1,660
		w/ wheel arch extensions: 1,690
Overall height (mm)		1 595
Wheelbase (mm)		2 435
Tread	Front (mm)	1 460
	Rear (mm)	1 470
Minimum turning radius (m)		4,7
Minimum ground clearance (mm)		180

CAPACITIES

Seating capacity		Persons	5
Fuel tank capacity		ℓ	32
Luggage capacity *1	Max volume	ℓ	947
	- fixed rear seat with 175/65R15 + steel wheel		
	Rear seatback folded (VDA method)	ℓ	469
	- fixed rear seat with 175/65R15 + steel wheel		
	Rear seatback raised (VDA method)	ℓ	260
	- fixed rear seat with 175/65R15 + steel wheel		

ENGINE

Type		K12M
Number of cylinders		4
Number of valves		16
Piston displacement	cm3	1 197
Bore x stroke	mm	73.0 x 71.5

ENGINE (CONTINUED)

Compression ratio		11,0	
Maximum output	kW/rpm	61/6,000	
Maximum torque	N-m/rpm	113/4,200	
Fuel distribution		Multi-point injection	

TRANSMISSION

Type		5MT	5AMT
Gear ratio	1 st	3,545	3,545
	2 nd	1,904	1,904
	3 rd	1,240	1,240
	4 th	0,914	0,906
	5 th	0,717	0,696
	Reverse	3,272	3,272
Final gear ratio		4,388	4,705

CHASSIS

Steering		Rack & Pinion	
Brakes	Front	Ventilated disc	
	Rear	Drum, leading and trailing	
Suspension	Front	MacPherson strut with coil spring	
	Rear	Torsion beam with coil spring	
Tyres		175/65R15	

WEIGHTS

Kerb weight (min. / with full option)	kg	850	860
Gross vehicle weight	kg	1 280	

FUEL CONSUMPTION

Average fuel consumption	ℓ/100km	5,1	4,9
Emissions	g/km	119	114

PERFORMANCE

Maximum speed	km/h	165	155
0-100 km/h	sec	11,6	13,0

MAJOR EQUIPMENT

Transmission	5MT	5MT / AMT
Grade	GL	GLX

CHASSIS

Tyres and wheels	175/65R15 + steel wheels with full wheel cover	⌘	-
	175/65R15 + alloy wheels	-	⌘
Spare tyre and wheel	175/65R15 + steel wheel	⌘	⌘

EXTERIOR

Wheel arch extensions		-	⌘
Roof rails		-	⌘
Front and rear bumpers	Body coloured	⌘	⌘
Front grille	Black	⌘	-
	Black with chrome accent	-	⌘
Outside door handles	Body coloured	⌘	⌘
Black-coloured A and B pillars		⌘	⌘
Tailgate opener	Handle-operated	⌘	⌘

VISIBILITY

Headlamps	Halogen multi-reflector	⌘	-
	LED projector	-	⌘
Headlamp leveling device	Manual	⌘	⌘
Fog lamps	Front (halogen)	-	⌘
Position lamps	LED	-	⌘
Wipers	Front: 2 speeds (low, high) + intermittent + washer	⌘	⌘
	Rear: 1 speed + washer	⌘	⌘
Rear window demister		⌘	⌘
Outside door mirrors	Body coloured	⌘	⌘
	Electrically adjustable	⌘	⌘
	Electrically foldable	-	⌘
	With built-in turn signal lamps	-	⌘
Day / night rear-view mirror	Manual dimming	⌘	⌘

STEERING AND INSTRUMENT PANEL

3-spoke steering wheel	Urethane	⌘	⌘
	With audio controls	⌘	⌘

STEERING AND INSTRUMENT PANEL (CONTINUED)

	With hands-free phone control	⌘	⌘
	Tilt-adjustable	⌘	⌘
Power steering		⌘	⌘
Tachometer		⌘	⌘
Information display	Digital clock	⌘	⌘
	Outside temperature gauge	-	⌘
	Fuel consumption gauge (instantaneous / average)	⌘	⌘
	Driving range	⌘	⌘
	Average speed	⌘	⌘
	Gear shift indicator (5MT / AMT)	⌘	⌘ (5MT)
	Gear position indicator (AMT)	-	⌘ (AMT)
Light-off and key reminder	Alarm	⌘	-
Light-off reminder	Alarm	-	⌘
Driver's seatbelt reminder	Lamp	⌘	⌘
Door ajar reminder	Lamp	⌘	⌘
Low fuel warning	Lamp	⌘	⌘
Meter illumination		-	⌘
Instrument panel colour	Black & white with elastomer material	⌘	⌘
Centre & side louver bezels	Black	⌘	-
	Silver	-	⌘

DRIVING AMENITIES

Electric windows	Front	⌘	⌘
	Rear	⌘	⌘
Central door locking	Switch on driver's side	⌘	⌘
Remote-control door locks	With hazard lamp answerback function	⌘	⌘
Keyless push start system		-	⌘
Air conditioner	Manual	⌘	-
	Automatic	-	⌘
Heater		⌘	⌘
Pollen filter		⌘	⌘
Audio	Antenna (mounted at rear of roof)	⌘	⌘
	Front speakers	⌘	⌘
	Rear speakers	-	⌘
	Front tweeters	-	⌘

MAJOR EQUIPMENT

Transmission	5MT	5MT / AMT
Grade	GL	GLX

DRIVING AMENITIES (CONTINUED)

Audio (continued)	MP3 compatible CD player, USB + Bluetooth®*	⌘	-
	7" touchscreen infotainment system with smartphone connectivity and reverse camera	-	⌘

INTERIOR

Cabin lights	Front cabin light (3-position)	⌘	⌘
Sun visors	Driver's side	⌘	⌘
	- With ticket holder	⌘	⌘
	Passenger's side	⌘	⌘
	- With vanity mirror	⌘	⌘
Assist grips	Passenger's side	⌘	⌘
	Rear x 2	⌘	⌘
Cup holders	Front x 2	⌘	⌘
	Rear x 1	⌘	⌘
Bottle holders	Front x 2	⌘	⌘
	Rear x 2	⌘	⌘
Centre-lower box		⌘	⌘
Centre console ornament	Blue**	-	⌘
	Titanium**	⌘	⌘
Shift knob	Black	⌘	-
	Chrome	-	⌘
Parking brake release button	Black	⌘	-
	Chrome	-	⌘
USB port	Instrument panel	⌘	⌘
12V accessory socket	Instrument panel	⌘	⌘
Foot rest	Driver's side	⌘	⌘
Remote fuel lid opener		⌘	⌘
Front & rear door trim colour	Black & white	⌘	⌘
Inside door handles	Black	⌘	-
	Chrome	-	⌘

INTERIOR (CONTINUED)

Inside door grips	Blue**	-	⚙
	Titanium**	⚙	⚙
	Front doors	⚙	⚙

SEATS

Front seats	Seat height adjuster (driver's side)	-	⚙
	Seatback pocket (passenger's side)	⚙	⚙
Rear seats	60:40-split single-fold	⚙	⚙
	Head restraint x 2	⚙	⚙

LUGGAGE AREA

Luggage area cover	Luggage area light	⚙	⚙
Luggage area light		⚙	⚙

SAFETY, SECURITY, AND ENVIRONMENTAL COMPATIBILITY

ABS with EBD function		⚙	⚙
Brake assist function		⚙	⚙
SRS front dual airbags		⚙	⚙
Pedal release system	Brake & clutch	⚙	⚙
Seatbelts	Front: 3-point ELR seatbelts with pretensioners, force limiters	⚙	⚙
	Rear: 3-point ELR seatbelts x 2, 2-point seatbelt for centre seat	⚙	⚙
ISOFIX child seat anchorages	x2	⚙	⚙
Child seat tether anchorages	x2	⚙	⚙
Childproof rear door locks		⚙	⚙
Side impact door beams		⚙	⚙
Immobiliser		⚙	⚙
Security alarm		⚙	⚙
Parking sensors	Rear	-	⚙
DRL (daytime running lights)	LED (integrated in headlamps)	-	⚙
High-mount stop lamp	LED	⚙	⚙

⚙ : Standard - : Not Available
*: Bluetooth is a registered trademark of Bluetooth SIG, Inc.
**: Dependant on exterior colour.



A white Suzuki Ignis is shown from the side, parked in a field of tall, dry grass. The background features a savanna landscape with scattered trees and a blue sky with light clouds. The car is positioned on the left side of the frame, with its front end pointing towards the right.

MAKE IT ABOUT YOU

The IGNIS gives you the opportunity to add your own flavour, so that you can drive with absolute confidence that the world sees you for exactly who you are.

EXTERIOR FINISHES

- 1 | REAR BOOT SPOILER (PRIMED)**
Part No. 990J0M66R07-470

- 2 | Mirror Cover**
Uptown Red (RHD) for Sigma & Delta
Part No. 84718M66R10-ZWR

Uptown Red (RHD) for Alpha & Zeta
Part No. 84718M66R20-ZWR

Tinsel Blue (RHD) for Sigma & Delta
Part No. 84718M66R10-ZWS

Tinsel Blue (RHD) for Alpha & Zeta
Part No. 84718M66R20-ZWS

LIGHTS AND BUMPERS

- 3 | SIDE BODY MOULDING, large²**
Black / silver, set for left and right side.
Part No. 990E0-62R07-000

- 4 | SIDE BODY MOULDING, small²**
Black, set for left and right side.
Part No. 990E0-62R08-000

- 5 | Front and Rear under spoiler split type Kit**
Part No. 990J0M66R07-510



6 | Back Door Garnish
Part No. 990J0M66R13-050

7 | Front Fog Bezel Garnish
Part No. 990J0M66R13-060

FLOORS AND STORAGE, YOUR WAY

8 | CARGO MAT “ECO”

Anthracite needle felt carpet with silver stitched logo and black binding.

Suitable for 2WD with slide rear bench.

Part No. 990E0-62R40-001

Suitable for 2WD with fix rear bench.

Part No. 990E0-62R40-003

9 | CARGO STORAGE ORGANISER

Including variable aluminium dividers and cover.

Suitable for 2WD.

Part No. 990E0-62R21-001

* Disclaimer: Colour of images displayed might not be available.



GET THE RIGHT ACCENT

1 | BODY SIDE DECAL

Available in following colours:

Red

Part No. 990E0-62R91-RED

Blue

Part No. 990E0-62R91-BLU

White

Part No. 990E0-62R91-WHT

WHEELS YOUR WAY

2 | WHEEL DECAL FOR 15" OE-WHEEL

With IGNIS logo, four-piece set.
Available in following colours:

Red

Part No. 99000-990EJ-WA1

Blue

Part No. 99000-990EJ-WA3

White

Part No. 99000-990EJ-WA4

3 | CENTRE CAP

With Suzuki logo, four-piece set.
Available in following colours:

Silver

Part No. 990E0-61M78-CAP

Black

Part No. 99236-62R00-DB7

Red

Part No. 99236-62R00-ZNB

White

Part No. 99236-62R00-26U





4

PROTECT YOUR IGNIS IN STYLE

4 | RAIN AND WIND DEFLECTOR SET

Four-piece set, for front and rear windows.

Part No. 990J0M66RQ0-010

5 | MUD FLAP, flexible^{2,3,4}

Two-piece set, front.

Part No. 990E0-62R13-000

Two-piece set, rear.

Part No. 990E0-62R14-000

* Disclaimer: Colour of images displayed might not be available.



5

IN YOUR SPACE, YOU DECIDE

INTERIOR

1 | INTERIOR STYLING KIT

Medium Gray

Part No. 9990J0M66RPJ-090

Space Blue

Part No. 990J0M66RPJ-100



1



ADD COLOUR AND COMFORT

2 | SUN SHADE SET

For rear passenger windows.

Part No. 990E0-62R20-000

For rear window.

Part No. 990E0-62R20-001

3 | SPORTS GEAR SHIFT LEVER KNOB

For 5MT, suitable for LHD and RHD with inlay and silver stitching.

Part No. 28113-61M40-000

4 | LEATHER BOOT

For 5MT, suitable for LHD and RHD with silver stitching.

Part No. 990E0-62R38-000

5 | CENTRE ARMREST¹

For more comfort, with storage department, adjustable in height and length, black.

Part No. 990E0-62R35-000

6 | SMOKERS KIT

Contains cigarette lighter and ashtray.

Part No. 990E0-68P00-LIG

7 | USB CHARGING SOCKET²

For rear seat passenger.

Part No. 990E0-62R00-USB

¹ Not in combination with rear USB socket, p/n 990E0-62R00-USB.

² Not in combination with center armrest, p/n 990E0-62R35-000.

* Disclaimer: Colour of images displayed might not be available.





PROJECT YOUR IGNIS IN STYLE

Arctic White Pearl



Silky Silver Metallic



Glistening Grey Metallic



Turquoise Blue Pearl Metallic



Midnight Black Pearl *Limited*



Lucent Orange & Midnight Black



Stargaze Blue & Midnight Black



All care is taken to ensure the accuracy of this brochure at the time of print approval. Specifications, features, prices and model availability may vary from those specified and may change without notice. Always consult your authorised Suzuki Dealer or refer to www.SuzukiAuto.co.za for the latest details on all models. SUZUKI AUTO South Africa (PTY) Ltd will not be held liable for any loss as a result of reliance on the content of this brochure, whether in negligence or otherwise. Vehicles are shown for illustrative purposes only and may not depict exact specifications. Published July 2017.

Part number 9900L-M66R4-BRO



SUZUKI AUTO South Africa (PTY) Ltd | Tel: 0861 511 111
No.52 Saturn Crescent, Linbro Business Park, Frankenwald, Malboro,Sandton
www.SuzukiAuto.co.za

