



**GRAND
VITARA**



Way of Life!

TAKE LIFE FOR A LONGER DRIVE

The Suzuki Grand Vitara was born from a single idea; whatever you love doing in your life, you should be able to just do it. In our busy lives, it's easy to lose track of what's really important, like taking your love of life out onto the open road.

The new, third-generation Grand Vitara is a pure Sport Utility Vehicle (SUV) born and bred to free the spirit and open paths where none existed before. Under the product concept of "off-road athlete", the Grand Vitara was rigorously engineered to excel in a wide range of demanding situations.

The goal was straightforward: Improve on the existing all-road mastery, efficient performance, practical urbanity, and the ease of use that has made the Grand Vitara such a worldwide success. The new, improved and powerful yet eye-catching Summit model presents driving brilliance, every kilometre of the way.

The DNA for success stems from Suzuki's heritage of sporty 4x4 vehicles with real off-road capabilities while advanced automotive engineering provided the breeding.





SUZUKI

GRAND
VITARA

AN ABSOLUTE PLEASURE TO DRIVE

Not only does the Grand Vitara give you the power to get wherever you want to go, but its overall quality makes sure that you get there in style. The fully automatic air-conditioning system keeps you as cool as you please while the top-class entertainment system makes your journey so much more enjoyable.

Grand upgrade

A freshly designed, stronger and black chrome grille* now accentuates this urban beast's highly rigid car body while the new, silver-painted roof rails* enhance its look and your driving experience.

*Summit model only

Grand Vitara's cabin design is well-matched to its sporty exterior styling. The refined atmosphere encourages driver and passengers to relax, while the smart, dynamic layout implies an active, fun-loving lifestyle. Available high-quality audio systems include single- and in-dash six-CD tuners. All factory-installed systems feature steering wheel-integrated controls for easy operation.





Thrilling transmission

Automatic transmission features sporty shift-gate configurations, plus gear ratios tuned for satisfying acceleration, a smooth, quiet ride and effort-free operation.

(Summit specifications shown)

Increase fuel economy and sporty performance with the five-speed manual transmission. New output-reduction design enhances shift feeling and durability, with reduced vibration.

(Dune specifications shown)

Instruments & controls

Audio control switches, positioned on the front of the steering wheel spoke, are easy to find and easier to use. The Grand Vitara Summit models also have cruise control for effortless touring.

Sound & climate control

Fully automatic air-conditioning system maintains the ideal cabin ambience for increased driving enjoyment.

Comfort & style

Interior styling, supreme comfort and cloth-accented trimmings complete the Grand Vitara's distinct image. The suede & fabric seats* are sure to evoke a strong sense of desire from onlookers.

*Summit model only

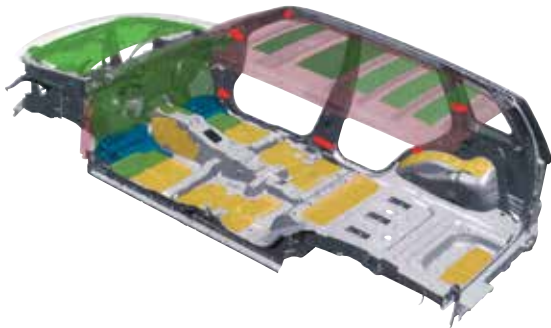


RIDING THE ROUGH HAS NEVER BEEN THIS COMFORTABLE

A step inside the Grand Vitara takes you to a whole new world that is pure Suzuki. All passengers are seated comfortably, making the Grand Vitara the ideal travel vehicle to accommodate not only friends and family, but all your activities too.

Noise and vibration reduction

Noise-reducing and vibration-absorbing materials have been extensively used throughout. These measures, together with the focused chassis and body engineering and the rigid "Built-in Ladder Frame," enhance occupant comfort and increase all-round driving pleasure under a wide variety of driving conditions.





Seats

60:40-split rear seats can be separately reclined for individual passenger comfort, or tumbled forward for more space as lifestyle meets demand.

Get your groove back

This high-quality and high-performance audio system produces impressively powerful sound throughout the car. Getting into the groove is a simple plug-in-and-play step to your favourite tunes.

More space, more memories

Every journey is a new memory for all the Grand Vitara's passengers and the spacious luggage area allows for more comfort and convenience, no matter how long or short the drive.

Convenience at arm's length

The centrally located floor console provides convenient storage for maps and other essentials, and features a sliding lid/armrest for comfort.

Handy cup holder storage

Hot or cold, you'll always enjoy the added convenience of front cup holders to store your warm and cool drinks, whenever you need them.



COMPLETE PEACE OF MIND – EVEN ON THE MOVE

The Grand Vitara's host of active and passive safety features inspire all-road confidence, ensuring that the excitement doesn't just end on the road. What's left for you to do is to sit back and enjoy the ride – wherever it may take you.

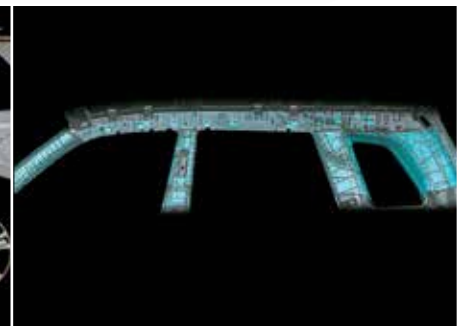
Built-in Ladder Frame

The "Built-in Ladder Frame" which integrates a ladder frame to a monocoque body increases rigidity and durability without adding to overall weight. This lightweight, one-piece body also reduces overall and floor heights, increasing cabin space despite its high ground clearance. Adding in the fully independent suspension further enhances resistance to twisting and flexing while contributing to linear handling response for smoother on-road cruising and impressive off-road traction. The bottom line for driver and passengers alike is the freedom to go where you will and the stability to enjoy every minute of it.

Airbags

High levels of occupant protection comprise standard driver's and front passenger's SRS dual front airbags with seatbelt pretensioners and force limiters, plus SRS side and curtain airbags.

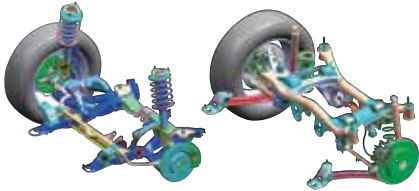
Note: The SRS airbags are shown inflated for descriptive purposes.





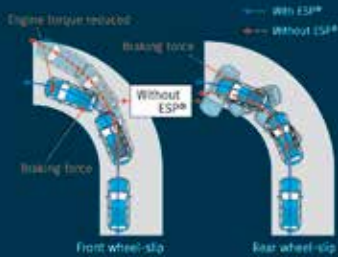
4-mode 4x4

The Grand Vitara's 4-mode 4x4 system transmits power to all four wheels at all times, ensuring positive traction regardless of road surface. A switch built into the centre console lets you quickly and easily change modes between 4H for most driving conditions, 4H Lock for serious off-roading and 4L Lock for extreme surface conditions. Switching to N-mode frees the transmission for safe and effortless towing of the Grand Vitara.



Suspension

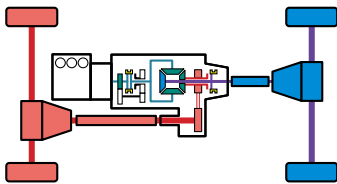
The fully independent suspension features front MacPherson struts and rear multi-link geometry, complementing the "Built-in Ladder Frame" and decreasing body noise while increasing on-road response and off-road handling.



Electronic Stability Program

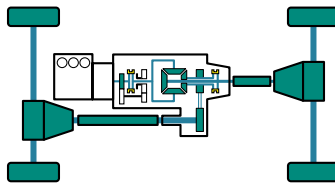
Available on Summit models, ESP®* (Electronic Stability Program) supplements the Suzuki Grand Vitara's inherent stability with three major functions: ABS with EBD, traction control and stability control. ESP's ECU uses various sensors to determine and hold the intended cornering line, greatly increasing traction and stability control while reducing front and rear wheel-slip for enhanced safety.

*ESP® is a registered trademark of Daimler AG.



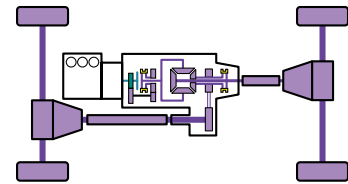
4H

The ideal mode for driving, 4H mode offers the appropriate front / rear torque split for smooth, quiet on-road performance plus impressive off-road traction.



4H Lock

For serious off-roading, this high-range 4x4 mode evenly distributes traction to front and rear wheels for powering through even deep mud.



4L Lock

With a transfer gear ratio nearly twice that of 4H Lock mode at 1.970, this low-range 4x4 mode ensures enough low-end traction to get out of extremely difficult conditions.

STYLE WITH NO LIMITS

With its bold new front mask and impressive fenders, the Grand Vitara is both dynamic and stylish in its appearance. Tough enough for off-road driving yet elegant enough to grace the concrete jungle, this vehicle is practically an adventure waiting to be driven - in style.

WHAT BOUNDARIES?

Based on Suzuki's long tradition of developing capable 4x4s, the Grand Vitara is a powerful and versatile machine that offers solid on- and off-road performance. Expand your boundaries to find your ultimate adventure and definition of fun.





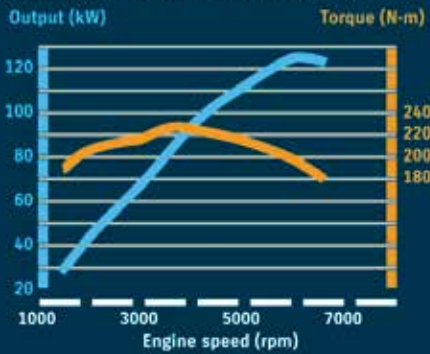


TAKE THE LONG WAY ROUND

Whether you're gliding over smooth surfaces or taking on rough terrain, the Grand Vitara's powerful engine and transmission will turn every journey into an unforgettable experience. With confidence in your Grand Vitara, you can undoubtedly go where you want, when you wish, taking along whomever you please.



2.4-litre VVT petrol engine



Maximum output

122/6,000 kW/rpm

Maximum torque

225/4,000 Nm/rpm

2.4-litre VVT petrol engine

Match its outstanding performance to your sensibilities with the 2.4-litre petrol with Variable Valve Timing (VVT) technology. This technology increases power and torque, widens the performance range while reducing fuel consumption, in turn maximising cost performance. Highly competitive specific power outputs and classic levels of torque are delivered at a staggering 122/6,000 kW/rpm and 225/4,000 Nm/rpm respectively.



SUZUKI GRAND VITARA SPECIFICATIONS				
Number of doors			5	
Engine			Petrol, 2.4l VVT	
Drive system			4-mode, 4x4	
Transmission			5MT	4AT
ENGINE				
Type			J24B	
Number of cylinders			4	
Number of valves			16	
Piston displacement		cm ³	2 393	
Bore x stroke		mm	92.0 x 90.0	
Compression ratio			10.0:1	
Maximum output		kW @ r/min	122/6,000	
Maximum torque		Nm @ r/min	225/4,000	
Fuel distribution			Multipoint injection	
TRANSMISSION				
Type			5MT	4AT
Gear Ratio	1st		4,545	2,826
	2nd		2,354	1,493
	3rd		1,693	1,000
	4th		1,241	0,688
	5th		1,000	-
	Reverse		4,431	2,703
Final gear ratio			3,727	5,125
Transfer gear ratio	High		1,000	
	Low		1,970	
DIMENSIONS				
Overall length		mm	4 500	
Overall width		mm	1 810	
Overall height		mm	1 695	
Wheelbase		mm	2 640	
Tread	Front	mm	1 540	
	Rear	mm	1 570	
Minimum turning radius		m	5,5	
Ground clearance		mm	200	
Approach angle		degrees	29	
Ramp breakover angle		degrees	19	
Departure angle		degrees	27	

SUZUKI GRAND VITARA SPECIFICATIONS				
CAPACITIES				
Seating capacity		persons	5	
Luggage capacity	Max. Volume (Manufacturer data)	litres	1 386	
	Rear seatback tumble-folded (VDA method)	litres	758	
	Rear seatback raised (VDA method)	litres	398	
Towing capacity	Braked trailer	kg	1 850	1 700
CHASSIS				
Steering			Rack and Pinion	
Brakes	Front		Ventilated disk	
	Rear		Ventilated disk	
Suspension	Front		MacPherson Strut	
	Rear		Multi-link	
Tyres			225/65R17 Dune	
			225/60R18 Summit	
WEIGHTS				
Kerb weight		kg	1655	1670
Gross vehicle weight		kg	2100	2100
PERFORMANCE				
Maximum speed		km/h	180	170
0-100 km/h		sec	11,7	12,0
FUEL CONSUMPTION				
Fuel tank capacity		litres	66	66

SUZUKI GRAND VITARA EQUIPMENT			
		DUNE	SUMMIT
Number of doors		5	
Engine		Petrol, 2.4l VVT	
Drive System		4-mode, 4x4	
Transmission		5MT/4AT	5MT/4AT
CHASSIS			
Tyres and wheels	225/65R17 + aluminium-alloy wheels	⊕	-
	225/60R18 + aluminium-alloy wheels	-	⊕
Spare tyre and wheel	225/65R17 + aluminium-alloy wheel	⊕	-
	225/60R18 + aluminium-alloy wheel	-	⊕
Spare wheel cover	Half cover (disc type) with "SUZUKI" logo	⊕	-
	Full cover with "SUZUKI" logo	-	⊕
EXTERIOR			
Roof Rails		⊕	⊕
Sunroof		-	⊕
Outside door handles	Coloured	⊕	⊕
Tailgate handle	Coloured	⊕	⊕
Door side chrome mouldings		⊕	⊕
VISIBILITY			
Headlamps	Halogen projectors	⊕	-
	High-Intensity Discharge (HID) projectors	-	⊕
	Headlamp washers	-	⊕
Headlamp levelling device	Automatic	-	⊕
Autosensing lamps		-	⊕
Green-tinted windows		⊕	⊕
Shadeband on windscreen		⊕	⊕
Wipers	Front: 2 speeds (low, high) + intermittent (adjustable) + water	⊕	⊕
	Rear: 1 speed + intermittent + washer	⊕	⊕
Rear window demister		⊕	⊕
Outside door mirrors	Electrically adjustable	⊕	⊕
	Built-in turn signal lamps	⊕	⊕
Day/Night rearview mirror		⊕	⊕
3-spoke steering wheel	Leather covered	⊕	⊕
	Audio switches	⊕	⊕
	Cruise control switches	-	⊕

SUZUKI GRAND VITARA EQUIPMENT			
		DUNE	SUMMIT
VISIBILITY			
Power steering		✦	✦
Tilt-adjustable steering wheel		✦	✦
Tachometer		✦	✦
Information display integrated into meter cluster	Digital clock	✦	✦
	Fuel consumption gauge (instantaneous / average)	✦	✦
	Driving range	✦	✦
	Average speed	✦	✦
	Outside temperature gauge	✦	✦
	Door ajar indication	✦	✦
	Lights on reminder	✦	✦
	Icy road warning	✦	✦
	Low fuel warning	✦	✦
	ESP® system check required indication	-	✦
	Gear position indicator (AT)	✦	✦
	4WD operating instruction	✦	✦
	4WD system check required indication	✦	✦
Driver's seatbelt reminder	Lamp	✦	✦
DRIVING AMENITIES			
Electric windows	Front	✦	✦
	Rear	✦	✦
Central door locking switch (Driver's side)		✦	✦
Remote-control door locks with hazard lamp answerback function		✦	✦
Keyless start		-	✦
Automatic air conditioner		✦	✦
Pollen filter		✦	✦
Audio	Speaker x4	✦	✦
	Tweeter x2	✦	✦
	Dashboard-centre speaker x1	✦	✦
	CD tuner + MP3 playback function + speed-sensing volume control	✦	-
	In-dash 6CD tuner + MP3 playback function + speed-sensing volume control	-	✦
Cruise control		-	✦

SUZUKI GRAND VITARA EQUIPMENT			
		DUNE	SUMMIT
INTERIOR			
Cabin lights	Front map lights	✦	✦
	Centre cabin light (3-position)	✦	✦
	Rear cabin light (3-position)	✦	✦
	Luggage area light (2-position)	✦	✦
Sun visors (Driver and passenger's side)		✦	✦
Ticket holders		✦	✦
Vanity mirrors		✦	✦
Overhead console		✦	✦
Assist grips	Driver's side	✦	✦
	Passenger's side	✦	✦
	Rear x2	✦	✦
Coat hooks	Rear x2	✦	✦
Cup holders	Front x2	✦	✦
	Rear x2	✦	✦
Bottle holders	Front x2	✦	✦
Storage pockets	Front doors	✦	✦
	Rear doors	✦	✦
Centre console box (x2)		✦	✦
12V Interior accessory sockets	Centre console area (x2)	✦	✦
Foot rest (Driver's side)		✦	✦
Remote fuel lid opener		✦	✦
Inside door openers	Silver coloured	✦	✦
Inside door grips	Silver coloured	✦	✦
Front and rear door trim	Cloth-accented	✦	✦
SEATS			
Front seats	Seat height adjuster (Driver's side)	✦	✦
	Slide and reclining adjustment	✦	✦
	Seatback pocket (Driver's side and passenger's side)	✦	✦
Rear seats	Reclining	✦	✦
	60:40 split	✦	✦
	Tumble-folding	✦	✦
	Head restraint x3	✦	✦
Seat upholstery material	Fabric	✦	-
	Suede & fabric combination	-	✦
Armrests	Slide function on floor console	✦	✦
	Rear seat centre	✦	✦

SUZUKI GRAND VITARA EQUIPMENT			
		DUNE	SUMMIT
LUGGAGE AREA			
Luggage area shelf		☞	☞
Luggage area under-floor compartment		☞	☞
Luggage storage pockets	Luggage area	☞	☞
	Tailgate	☞	☞
Luggage area convenience hooks	X4	☞	☞
Luggage area 12V accessory socket (x1)		☞	☞
SAFETY, SECURITY, AND ENVIRONMENTAL COMPATIBILITY			
SRS front dual airbags		☞	☞
SRS side airbags (Incorporated into front seats)		☞	☞
SRS curtain airbags (Front + rear)		☞	☞
Energy-absorbing trim		☞	☞
Foot-protecting design brake pedal		☞	☞
Front seatbelts (Driver and passenger's side)	3-point ELR seatbelts + pretensioners + force limiters + height adjusters	☞	☞
Rear seatbelts	3-point ELR seatbelts (x3)	☞	☞
ISOFIX child seat anchorages (x2)		☞	☞
Child seat tether anchorages (x3)		☞	☞
Childproof rear door locks		☞	☞
Side impact door locks		☞	☞
ABS with EBD function		☞	☞
Electronic Stability Program (ESP®)		-	☞
Hill Descent Control (HDC)		-	MT: -/ AT: ☞
Brake assist function		☞	☞
AT shift lock / key interlock		MT: -/ At: ☞	MT: -/ AT: ☞
High-mount stop lamp		☞	☞
Immobiliser		☞	☞

ESP® is a registered trademark of Daimler AG.



PERSONALISE EVERY JOURNEY WITH GRAND ACCESSORIES*

Enhance your driving experiences with a wide selection of unique and eye-catching Grand Vitara accessories designed to bring the most out of your SUV. Whatever your lifestyle, there's a suitable accessory to fit right in.

* Although all accessories are available to be ordered, the vehicle specifications shown may differ from the car being sold in South Africa



1



3



6



10

13





- 1 | 5-Spoke aluminium wheel
6.5J x 17 inches
Part No. 43200-66840-ZA8
- 2 | 5-Spoke aluminium wheel
6.5J x 17 inches
Part No. 43200-66820-27S
- 3 | 5-Spoke aluminium wheel
6.5J x 16 inches
Part No. 43200-65850-27S
- 4 | 9-Spoke aluminium wheel
6.5J x 17 inches
Part No. 990E0-65J24-000
- 5 | 5-Spoke aluminium wheel
6.5J x 17 inches
Part No. 43201-78800-27S
- 6 | 7-Spoke aluminium wheel
7.0J x 18 inches
Part No. 43201-79800-27S
- 7 | 10-Spoke aluminium wheel
6.5J x 17 inches
Part No. 43200-66850-27S
- 8 | Tail lamp trim
Set of left and right
Part No. 990E0-65J05-000
- 9 | Parking sensor
4 Sensors. Paintable
Part No. 990E0-65J10-000
- 10 | Exhaust tip
For 3.2L model. 76.3mm. Stainless steel pipe
Part No. 99000-99069-423
- 11 | Hood vent accents
Metallic silver painted. Set of left & right
Replaces standard hood vents
Part No. 99000-990F0-TW6
- 12 | Front grille
PRE-FACELIFT ONLY: Chrome. Replaces standard front grille
Part No. 99000-99056-G06
- 13 | Skid plate front
PRE-FACELIFT ONLY
Part No. 990E0-65J83-000
- 14 | Front guard "urban"
PRE-FACELIFT ONLY: Primed
Part No. 990E0-65J88-000
- 15 | Fuel lid cover
Part No. 99000-99069-334
- 16 | Antenna mount accent
Chrome
Part No. 99000-99091-AN1

17 | Windshield washer accents
Chrome. Set of left & right
Part No. 99000-990X4-W02

18 | Plastic lock key
Black. For locking spare tyre cover
Part No. 99000-99037-20T

19 | Front bumper garnish
PRE-FACELIFT ONLY: Black
Part No. 99000-99013-Z99

20 | Outside mirror accents
Chrome. Set of left and right
Not compatible with built-in turn signal lamps
Part No. 99000-99064-N2T

21 | Front bumper under garnish
PRE-FACELIFT ONLY
Center: Silky Silver Metallic (Z2S)
Side: Graphite Grey Pearl Metallic (ZDL)
Part No. 99000-99023-A54

22 | Front bumper under garnish
PRE-FACELIFT ONLY
Center: Silky Silver Metallic (Z2S)
Side: Quasar Grey Metallic (ZMA)
Part No. 99000-99023-A55

23 | Fog lamp set
FACELIFT ONLY
Complete set incl. fog lamps, bezel and harness kit
Part No. 990E0-65J36-010

24 | Dog guard
Part No. 990E0-65J48-000

25 | Luggage room and rear gate net
Part No. 99000-990J5-E33

26 | Rear hatch cargo net
Part No. 990E0-65J38-000

27 | Rear gate net
Part No. 990E0-65J40-000

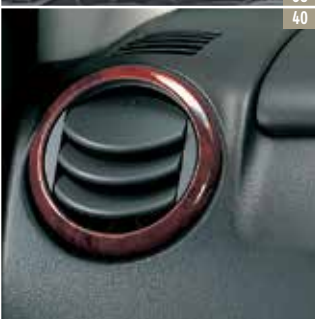
28 | Seat under tray
For passenger seat
Part No. 99000-990N8-K60

29 | Luggage room carpet
Delux with logo
Part No. 990E0-65J43-000

30 | Luggage room carpet
Economical with logo
Part No. 990E0-65J46-000

31 | Cargo tray
Part No. 99000-99023-N25





32 | Front bumper garnish
PRE-FACELIFT ONLY: Chrome
Part No. 99000-99013-Z98

33 | Front under spoiler
PRE-FACELIFT ONLY
Part No. 99000-99036-F8M Z7T
Part No. 99000-99036-F8N Z2S
Part No. 99000-99036-F8S ZJ3
Part No. 99000-99036-F8P ZDL
Part No. 99000-99036-F8R ZMA
Part No. 99000-99036-F8T ZJP

34 | USB adapter
Part No. 99000-79T62-001

35 | Decorative trim set
FACELIFT ONLY
Chrome finish, set for rear, left and right side,
for models with spare wheel only
Part No. 990E0-65J72-000

36 | Gear shift knob (AT)
For AT model
Part No. 99000-99013-M04

37 | Vent trim
Brushed aluminium effect. Set of 2 pieces
Part No. 99000-99013-F82

38 | Door handle trim
Brushed aluminium effect. Set of 4 pieces
Part No. 99000-99013-F84

39 | Instrument panel trim
Brushed aluminium effect. Set of 2 pieces
Part No. 99000-99013-F81

40 | Vent trim
Wood effect. Set of 2 pieces
Part No. 99000-99013-D68

41 | Door handle trim
Wood effect. Set of 4 pieces
Part No. 99000-99013-D70

42 | AT consol trim
Wood effect for AT model
Part No. 99000-99013-D67

43 | Rear upper spoiler
Primed
Part No. 990E0-65J04-000

44 | Window visor
Part No. 9900L-78K00-002

45 | Front mud guard
Primed. Set of left and right. Not compatible with side step boards
Part No. 99000-99004-A1R

46 | Rear mud guard
Primed. Set of left and right
Part No. 99000-99004-A1S

47 | Mud flap rigid
Set of left and right. Paintable. Not compatible with side step boards
Part No. 990E0-65J63-000

48 | Rear bumper protection plate
Stainless steel
Part No. 99000-99069-335

49 | Mud flap flexible rear
Set of left and right
Part No. 990E0-65J09-000

50 | Bumper corner protection
FACELIFT ONLY
For front and rear, four-piece set, can be painted in body colour.
For 5-door model
Part No. 990E0-64J55-000

51 | Tow bar
Detachable
Part No. 9900L-78K00-004

52 | Luggage Module
EXCURSION. Aluminium. To be used with multi roof
rack 990E0-65J18-000
Part No. 99000-990YT-406



43



44



45



46



47



48



49



50



51



52



52



53



54



55



56



57



58



59



60



61



62



63



64



65

53 | Bonnet guard
Part No. 99000-78K00-000

54 | Headlight guard
Part No. 9900L-78K00-001

55 | Bumper corner protection
PRE-FACELIFT ONLY:
Set of 4 pieces (front and rear), Paintable
Part No. 990E0-65J85-000

56 | Door sill guard set
Set of 4 pieces
Part No. 990E0-65J25-000

57 | Bodyside molding set
Raw set of 4 pieces (Photo shows painted in ZLC)
Part No. 990E0-65J07-000

58 | Rear bumper protection sheet
Black
Part No. 990E0-65J29-000

59 | Rear bumper protection sheet
Transparent
Part No. 990E0-65J30-000

60 | Door sill guard set, polished stainless steel
Set of 4 pieces
Part No. 99000-990G9-946

61 | Multi roof rack
Aluminium. Vehicle with roof rail only
Part No. 990E0-65J18-000

62 | Bike carrier
BARACUDA. Aluminium. To be used with multi roof rack
990E0-65J18-000
Part No. 99000-990YT-206

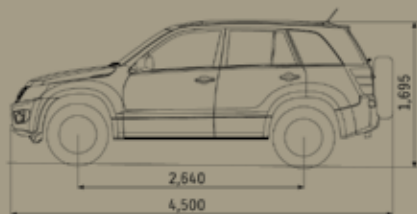
63 | Multi roof rack
Vehicle with roof rail only
Part No. 99000-990B1-940

64 | Luggage
For 99000-990B1-940
Part No. 99000-990B1-949

65 | Bike carrier
For 99000-990B1-940
Part No. 99000-990B1-946

MAGNIFICENT COLOURS FOR EVERY GRAND ADVENTURE

Brighten up even the cloudiest days with a selection from the Grand Vitara's variety of vibrant colours.



Pearl White



Silky Silver Metallic



Steel Silver Metallic
(Summit only)



Metallic Quasar Grey



18" Dark Silver Alloy
(Summit)



17" Alloy
(Dune)





Prime Gaia Bronze



Bluish Black Metallic



Cool Khaki Pearl Metallic



Suede and fabric seats

SUZUKI

COMPLETE

Suzuki understands that purchasing a new vehicle is a substantial investment. Our unwavering commitment to customer satisfaction is represented in our 'Suzuki Complete' package, which includes every aspect of the after-sales support, comprising the warranty, service plan and roadside assistance as standard.

Warranty

All Suzuki models are covered by a comprehensive manufacturer's warranty against any defects for a period of 3 years or 100 000 km. This is supported by a 6-year Anti-corrosion cover.

Service Plan

The Grand Vitara benefits from a 6yr / 90 000 km service plan. This plan includes the replacement of oil, the oil filter, fuel filter, brake fluid, air filter and accessory belts, but excludes tyres, brakes and other wear-and-tear items.

Roadside Assistance

Every new Grand Vitara comes with a roadside assistance plan, administered by the Automobile Association of SA. Some of the benefits offered by this comprehensive package include: round-the-clock AA road patrols, battery and locksmith call-out-services, mechanical and electrical, breakdown towing (accident towing is optional), emergency medical rescue, vehicle repatriation and stand-by-you armed roadside security response service.



All care is taken to ensure the accuracy of this brochure at the time of print approval. Specifications, features, prices and model availability may vary from those specified and may change without notice. Always consult your authorised Suzuki Dealer or refer to www.SuzukiAuto.co.za for the latest details on all models. SUZUKI AUTO South Africa (PTY) Ltd will not be held liable for any loss as a result of reliance on the content of this brochure, whether in negligence or otherwise. Vehicles are shown for illustrative purposes only and may not depict exact specifications. Published October 2014.

Part number 9900L-78K06-CAT



SUZUKI AUTO South Africa (PTY) Ltd | Tel: 0861 511 111 | Fax: 011 608 2489
17 Enterprise Close, Linbro Business Park, Marlboro, 2090
PO Box 1995, Kelvin, South Africa, 2054 | www.SuzukiAuto.co.za