



ERTIGA



Way of Life!

LIVE LIFE WITH LUV

Transform your life with the experience of a new, powerful kind of **LUV** – that Suzuki Ertiga kind of **LUV**. The all new Suzuki Ertiga, with advanced technology for better performance and seven-seater flexi-seating presents a stylish, high quality interior that will awaken all your senses and you will see **LUV - Life Utility Vehicle** - in a whole new light.

LUV is that sensation you get when you sit behind the wheel of the perfect car, it's the game that two (or seven) can play and everybody wins. Once you are on the road in the Ertiga, the responsiveness of the engine is the perfect assurance that the road ahead is well worth the time spent travelling. After all, the journey of a thousand memories begins with **LUV**.

NOW THAT'S

LUV

Life Utility Vehicle









LUV IS FIRST IMPRESSIONS

All it takes is one look. Then that incredible feeling takes over and it feels like falling in love for the first time - again. Designed to seat a whopping seven passengers, this sophisticated vehicle is an exciting addition to the Suzuki family. From peak-hour driving trips to school and work, and weekend excursions to the zoo, to courtesy transportation between hotels and airports, the Ertiga will take you there.

Smart side view mirrors*

Smart side view mirrors highlight the Ertiga's sleek styling, adding a hint of luxury with integrated indicators for augmented safety.

Stylish cluster lamps

Sharp and elegant finishes add style and class to the headlamps.

Aerodynamic styling

The aerodynamic shape allows the vehicle to use less fuel. Air flows easily, therefore less energy is needed to move it forward.

Central door locking*

Enjoy the benefits of additional safety and security measures through the ability to control access to the vehicle via remote control. Since there may be multiple passengers in the Ertiga, the convenience of unlocking the vehicle quicker is welcome, particularly in rainy weather.

Stylish wheel covers*

A set of full wheel caps accentuates the Ertiga's bold but gracious structure.

*GL model only

LUV IS INNER BEAUTY

The seven-seater Ertiga comes with a spacious interior that complements its imposing appearance on the road. Its pleasantly stylish beige interior provides the perfect balance between effortless motoring and beauty. This practical family transporter is always willing to turn any road trip into a smooth and enjoyable experience.

Handy storage spaces

Enjoy easy access to the small items you keep close for your convenience. Your sunglasses, refreshments and maps are now all at arm's length while your eyes stay on the road.

USB port*

The USB port, and 12V power socket on the instrument panel and in the second row, conveniently enables you to play your favourite tunes and charge your phone on the go.

MP3 CD tuner*

Enjoy a modern audio system that includes AM/FM radio, MP3 CD player and USB compatibility.

Audio switches*

Ease, precision and accessibility start with steering wheel-mounted audio control switches. Now you can increase and decrease the volume at your leisure, without taking your eyes off the road.

Bluetooth*

Speak freely with Bluetooth technology; making and receiving calls is now as easy as pushing a button and saying hello.

Electric windows*

With front and rear electric windows to provide the benefit of smooth and easy operation, the driver is far less likely to be distracted, making every road trip a little safer for everyone on board.

Back storage compartment*

Just below the luggage area is a neat and useful storage compartment that can hold those few and small items you need. There's also a small cover titled 'spare tyre'; by simply removing this, you get easy access to the winding mechanism that releases the full size spare tyre when necessary.

*GL model only









LUV IS A FAMILY THAT TRAVELS TOGETHER

LUV gives you the space to be comfortable, warm and happy. Open the doors to the Ertiga and welcome all things elegantly designed to optimise the convenience of the driver and all six passengers.

This Suzuki boasts a long wheelbase, high headroom, ample legroom and careful positioning of the seats and more than enough space for everyone, plus their gear.

The Ertiga's flexibility makes it the ideal choice for everything from shopping sprees at the mall to soccer tournaments with the boys. The foldable seats in the third row free up more packing space for everything you need to take with you. Both the second and third row seats can be adjusted into an array of configurations to accommodate different passenger and luggage needs.

2nd Row air conditioning with controls*

The rear cabin features a ceiling-mounted, three-setting, air conditioning system that enables perfect temperature control to ensure that your days are always cool.

3rd Row split-folding capability*

The 50:50 split-folding third row seats allow for one or both sides to be folded down, providing the most passenger seating and cargo-carrying combinations, making the Ertiga more versatile.

High quality seat upholstery*

Interior styling and supreme comfort go hand-in-hand. The new seat upholstery with a fabric finish maximises comfort, no matter how short or long your drive.

*GL model only



NOW THAT'S
LUV
Life Utility Vehicle



LUV IS YOUR GUARDIAN ANGEL

To take on life with confidence and total peace of mind, you have to feel safe behind the wheel. The Ertiga is equipped with a wide range of safety features for enhanced driving enjoyment and can easily stand up to the rigours of family life.

SRS dual airbags

Safety comes standard in the Ertiga. Armed with supplemental restraint system (SRS) dual front airbags for the driver and front passenger, these inflate immediately when airbag sensors detect that a significant frontal impact is occurring, helping reduce the risk of injury during a frontal collision.

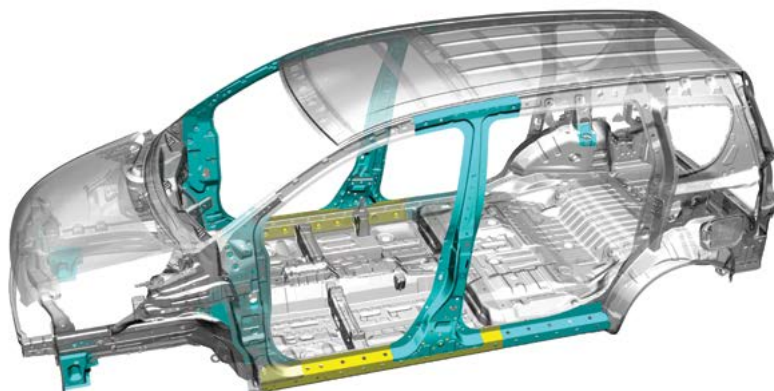
ABS with EBD for controlled braking

The anti-lock braking system (ABS) is a safety system that prevents the wheels on a moving Ertiga from locking up (or seize while rotating) while braking, thereby offering improved control over dry and especially slippery surfaces. The electronic brake force distribution (EBD) system maintains the Ertiga's control with variation in braking pressure to maximise stopping power.

Reverse parking sensors*

Parking the Ertiga in tight and sometimes crowded urban spaces, in reverse, is no longer tricky. The beep of the four reverse parking sensors greatly enhances safety by making you aware of objects in your path to avoid, leaving very little room for accidental bumps.

*GL model only



Optimised Strength and Weight

The use of higher tensile steel for strategic sections of the body structure and carefully positioned reinforcements provides excellent rigidity and strength, and helps reduce overall body weight without compromising on safety.

THE POWER OF LUV

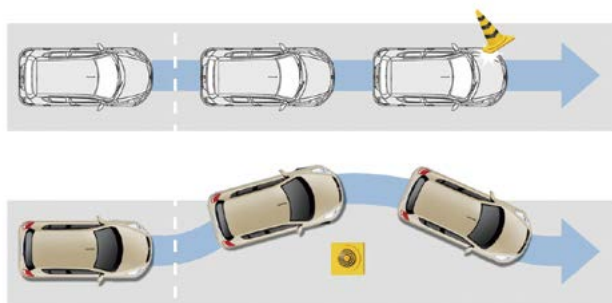
The Ertiga's 1.4-litre engine is the class-leader in fuel efficiency.

The proven 1.4 litre engine's impressive environmental credentials include fuel consumption of only 6.6l/100km (combined cycle), which explains its effortless ability to drive in the city and on the highways. The intake variable valve timing makes it the most fuel-efficient people mover in its class.

Then all you have to do is fire her up and see how promptly she will settle down to a very refined idle.

Maximum output: 70/6,000 kW/rpm

Maximum torque: 130/4,000 Nm/rpm



ABS with EBD for controlled braking

Anti-lock Braking System with Electronic Brake force Distribution.



Chassis

The Ertiga uses the new Swift's light, highly rigid platform as the base. In addition to excellent handling and driving stability, roomy cabin space is attained.

SUZUKI ERTIGA SPECIFICATIONS

Engine	Petrol, 1.4L		
Transmission	5MT		4AT
Number of doors	5		

DIMENSIONS

Overall length		mm	4 265
Overall width		mm	1 695
Overall height		mm	1 685
Wheelbase		mm	2 740
Tread	Front	mm	1 480
	Rear	mm	1 490
Minimum turning radius		m	5,2
Minimum ground clearance		mm	185

CAPACITIES

Seating capacity		persons	7
Luggage capacity with luggage	Max. volume (Manufacturer data)	litres	736
area underbox	3rd row seatback folded (VDA method)	litres	482
	3rd row seatback raised (VDA method)	litres	135
Fuel tank capacity		litres	45

ENGINE

Type		K14B
Number of cylinders		4
Number of valves		16
Piston displacement	cm3	1 373
Bore x stroke	mm	73.0 X 82.0
Compression ratio		11,0
Maximum output	kW r/min	70/6,000
Maximum torque	Nm r/min	130/4,000
Fuel distribution		Multipoint injection

TRANSMISSION

Gear ratio	1st	3,909	2,875
	2nd	2,043	1,568
	3rd	1,407	1,000
	4th	1,064	0,697
	5th	0,769	-
	Reverse	3,250	2,300
Final gear ratio		4,687	4,545

CHASSIS

Steering		Rack and pinion
	Front	Ventilated disc
	Rear	Drum, leading and trailing
Suspension	Front	MacPherson strut with coil spring
	Rear	Torsion beam with coil spring
Tyres	185/65R15	

WEIGHTS

Kerb weight (min./with full option)	kg	1,175	1 185
Gross vehicle weight	kg	1 760	1 770

ENVIRONMENTAL PERFORMANCE

Fuel consumption	ℓ/100km	6.2	6.2
------------------	---------	-----	-----

EQUIPMENT

Grade	GA	GL
-------	----	----

CHASSIS

Tyres and wheels	185/65R15 + steel wheels (centre caps)	⌘	-
	185/65R15 + steel wheels (full wheel caps)	-	⌘
Spare tyre and wheel	Full size	⌘	⌘

EXTERIOR

Chrome front grille		-	⌘
Chrome back door garnish		-	⌘
Black-coloured pillars	B pillars	-	⌘
	C pillars	⌘	⌘
Outside door handles	Unpainted	⌘	-
	Coloured	-	⌘
Tailgate outside handle	Coloured	-	⌘
Tailgate opener	Key-operated	⌘	-
	Handle-operated	-	⌘
Mud flaps	Front	-	⌘
	Rear	-	⌘

VISIBILITY

Headlamps	Halogen multireflector	⌘	⌘
Green-tinted windows		⌘	⌘
Rear window demister		⌘	⌘
Wipers	Front: 2-speed (low, high) + intermittent + washer	⌘	⌘
	Rear: 1-speed + washer	-	⌘
Outside door mirrors	Coloured	-	⌘
	Manually adjustable	⌘	-
	Electrically adjustable	-	⌘
	Electrically foldable	-	⌘
	Built-in turn signal lamps	-	⌘
Day/night rearview mirror		-	⌘

STEERING AND INSTRUMENT PANEL

3-spoke steering wheel	Urethane	⌘	⌘
	Audio switches	-	⌘
	Bluetooth switches	-	⌘
Electric power steering		⌘	⌘
Tilt-adjustable steering wheel		⌘	⌘
Double horn		⌘	⌘
Tachometer		-	⌘
Information display integrated into meter cluster	Digital clock	⌘	⌘
	Tripmeter	⌘	⌘
	Odometer	⌘	⌘
	Fuel consumption gauge (instantaneous/average)	⌘	⌘
	Driving range	⌘	⌘
Light-off reminder	Alarm	⌘	⌘
Key-off reminder	Alarm	⌘	⌘
Driver's seatbelt reminder	Lamp	⌘	⌘
Door ajar reminder	Lamp	⌘	⌘
Low fuel warning	Lamp	⌘	⌘

EQUIPMENT CONTINUED

Grade		GA	GL
-------	--	----	----

DRIVING AMENITIES

Intake-VVT		⌘	⌘
Electric windows	Front	-	⌘
	Rear	-	⌘
Central door locking (including tailgate)	Switch (driver's side)	-	⌘
Remote-control door locks	With horn & hazard lamp with answerback function	-	⌘
Air conditioner	Front manual	⌘	⌘
	Rear manual	-	⌘
Rear vents		-	⌘
Heater	Front	⌘	⌘
Pollen filter		⌘	⌘
Audio	Antenna (mounted at front of roof)	⌘	⌘
	Speaker x 4 (front and rear door trims)	-	⌘
	2DIN AM/FM audio + CD + Bluetooth	-	⌘
	USB	-	⌘

INTERIOR

Cabin lights	Front cabin light (3-position)	-	⌘
	Centre cabin light (3-position)	⌘	-
	Luggage area light (3-position, mounted at rear of roof)	⌘	⌘
Sun visors	Both sides	⌘	⌘
	With ticket holder (driver's side)	⌘	⌘
	With vanity mirror (passenger's side)	-	⌘
Assist grips	Passenger's side	⌘	⌘
	2nd-row x 2	⌘	⌘
	3rd-row x 2	⌘	⌘
Cup holder	Centre console	⌘	⌘
	Dashboard	⌘	⌘
Bottle holders	Front x 2	⌘	⌘
	2nd-row x 2	⌘	⌘
	3rd-row x 2	⌘	⌘
Storage pockets	Front and rear doors	⌘	⌘
Centre console box		⌘	⌘
Shift knob	Silver garnish	-	⌘
USB socket (centre-lower box)		-	⌘
12V interior accessory socket	Instrument panel x1	⌘	⌘
	2nd row x 1	-	⌘
Remote fuel lid opener		⌘	⌘
Inside door openers	Chromed	-	⌘
Door trim	Silver-accented	-	⌘
	Cloth-accented	-	⌘

EQUIPMENT CONTINUED

Grade	GA	GL
-------	----	----

SEATS

Front seats	Head restraint x 2	⌘	⌘
	Slide and recline adjustment (both sides)	⌘	⌘
	Seatback pocket (passenger's side)	-	⌘
2nd Row seats	Head restraint x 2	-	⌘
	Reclining	⌘	⌘
	Slidable	⌘	⌘
	60:40-split single-folding	⌘	⌘
	Single-folding	⌘	⌘
	One-touch walk-in mechanism	⌘	⌘
2nd Row centre armrest		-	⌘
3rd Row seats	Head restraint x 2	-	⌘
	Bench seat	⌘	-
	50:50-split fold	-	⌘
	Single-folding	⌘	-
	Tilt-down folding	-	⌘

LUGGAGE AREA

Luggage area underbox	-	⌘
-----------------------	---	---

SAFETY, SECURITY AND ENVIRONMENTAL COMPATIBILITY

SRS dual front airbags		⌘	⌘
Collapsible steering column		⌘	⌘
Seatbelts	Front: 3-point ELR seatbelts	⌘	-
	Front: 3-point ELR seatbelts with pretensioners, force limiters and height adjusters	⌘	-
	2nd row: 3-point ELR seatbelts x 2 with centre 2-point lapbelt	-	-
	3rd row: 3-point ELR seatbelts x 2	⌘	⌘
		⌘	⌘
Childproof rear door locks		⌘	⌘
Side impact door beams		⌘	⌘
ABS with EBD function		⌘	⌘
High-mount stop lamp		⌘	⌘
Immobiliser		⌘	⌘
Reverse parking sensor	4 Rear sensors	-	⌘
Security alarm	Door sensing	-	⌘

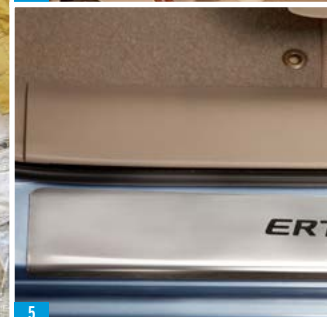
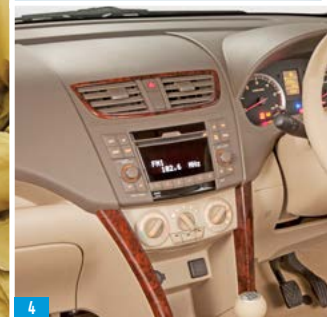
⌘: Standard

NOW THAT'S LUV

Life Utility Vehicle







LUV BRINGS THE EXTRA PLEASURES OF LIFE

LUV is many things; from inner and outer beauty to the space to travel together with your loved ones, happily and comfortably. The Ertiga LUV (Life Utility Vehicle)'s wide selection of extras* is designed to enhance your driving experience and accommodate every aspect within the joys of family life.

*Although all accessories are available to be ordered, the vehicle specifications shown may differ from the car being sold in South Africa.





2



3



8



6



9



9



10



11

- 1 | Bumper corner protector
Part No. 990J0-M60M17-010
- 2 | Door visor set
Part No. 990J0-M60MQ0-010
- 3 | Body side moulding
Part No. 990J0-M60M01-010
- 4 | Interior styling kit - carbon
Part No. 990J0-M74LPJ-050
- 5 | Door sill guard set
Front & Rear
Part No. 990J0-M60MP6-010
- 6 | Exterior styling kit
Styling kit primed
Part No. 990J0-M60M07-020
- 7 | Seat cover
Fabric. Beige Bolster & Brown Jacquard
Part No. 990J0-M60MB4-060
- 8 | Seat cover
Fabric. Beige Bolster & Brown Bolster
Part No. 990J0-M60MB4-080
- 9 | Seat cover
Fabric. Beige Bolster & Pile
Part No. 990J0-M60MB4-070
- 10 | Power window kit
Front
Part No. 990J0-M60M03-010
- 11 | Power window kit
Rear
Part No. 990J0-M60M03-020

SHADES OF LUV

With a large variety of colours to choose from, finding your perfect colour of **LUV** is easier than ever before.



Metallic Serene Blue



Prime Radiant Beige



Pearl Blue Blaze



Metallic Granite Grey



Metallic Silky Silver



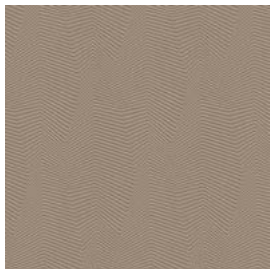
Superior White (Solid)



GL
15 inch steel wheels with full wheel cap



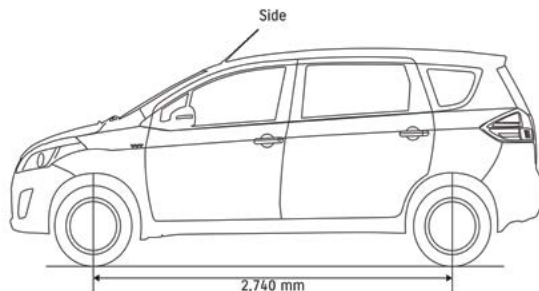
GA
15 inch steel wheels with centre cap



GL



GA



SUZUKI

COMPLETE

Suzuki understands that purchasing a new vehicle is a substantial investment. Our unwavering commitment to customer satisfaction is represented in our 'Suzuki Complete' package, which includes every aspect of after-sales support, with the warranty, service plan and roadside assistance being standard.

Warranty

All Suzuki models are covered by a comprehensive manufacturer's warranty against any defects for a period of three years or 100 000 km. This is supported by a six year body corrosion warranty subject to terms and conditions.

Service Plan

The Suzuki Ertiga benefits from a 4 year / 60 000km service plan. This plan includes the replacement of oil, the oil filter, fuel filter, brake fluid, air filter and accessory belts, but excludes tyres, brakes and other wear-and-tear items.

Roadside Assistance

Every new Ertiga comes with a roadside assistance plan. Some of the benefits offered by this comprehensive package include: battery and locksmith call-out services, mechanical and electrical breakdown, towing (accident towing is optional), emergency medical rescue, vehicle repatriation and a stand-by-you armed roadside security response service.

All care is taken to ensure the accuracy of this brochure at the time of print approval. Specifications, features, prices and model availability may vary from those specified and may change without notice. Always consult your authorised Suzuki Dealer or refer to www.SuzukiAuto.co.za for the latest details on all models. SUZUKI AUTO South Africa (PTY) Ltd will not be held liable for any loss as a result of reliance on the content of this brochure, whether in negligence or otherwise. Vehicles are shown for illustrative purposes only and may not depict exact specifications. Published March 2016.

Part number 9900L-60M02-CAT



SUZUKI AUTO South Africa (PTY) Ltd | Tel: 0861 511 111 | Fax: 011 608 2489
17 Enterprise Close, Linbro Business Park, Marlboro, 2090
PO Box 1995, Kelvin, South Africa, 2054 | www.SuzukiAuto.co.za

