

The Kia Carens

7 Seats for Every Journey.



Movement that inspires

We are
Motus

Extra runs in the family

The Kia Carens is built for the shifts of family life. The kind you don't always plan for. Because in most families, "one more" is never unusual. It's expected. With space for up to seven and the flexibility to adapt in an instant, every detail works in harmony. So, nothing tries too hard.

Everything falls into place with the Kia Carens.



A futuristic edge for the everyday

Every journey makes a statement. And the new Carens makes it boldly. The latest design language combines a bold stance, a distinct front and daytime running lights that make every arrival feel welcoming. Because when you're travelling with the people who matter most, the exterior should feel just as considered as the interior.

At the front, a striking Star Map LED lighting signature sets the tone, giving the Carens a refined, high-tech presence. A sleek roofline, complemented by a rear spoiler and integrated roof rails, adds both style and practicality. LED headlights with auto control and LED rear taillights enhance visibility while reinforcing the vehicle's sharp, contemporary look.

It's the kind of multi-purpose SUV that brings everyday functionality without compromising on design. The result is a vehicle that feels equally at ease navigating busy city streets or heading out on longer, more relaxed drives.



All in sync

Stepping into the new Carens feels like entering a space that just gets you. From the immersive Dual Panoramic Display to the sleek D-cut steering wheel and its smart simplicity, every element is designed to keep you in tune. Inside, generous legroom and headroom pair with comfortable seating across all three rows, creating a relaxed environment for every family drive. A spacious boot ensures there's room for everything you need, making each journey as practical as it is enjoyable.

The seats keep you comfortable, and the ambient lighting sets the tone, along with a fresh cabin atmosphere. With sound by Bose and thoughtful touches throughout, it's a space that doesn't just impress. In fact, it stays with you.



*Specification varies by model. Please consult your Kia dealership to confirm all specification.



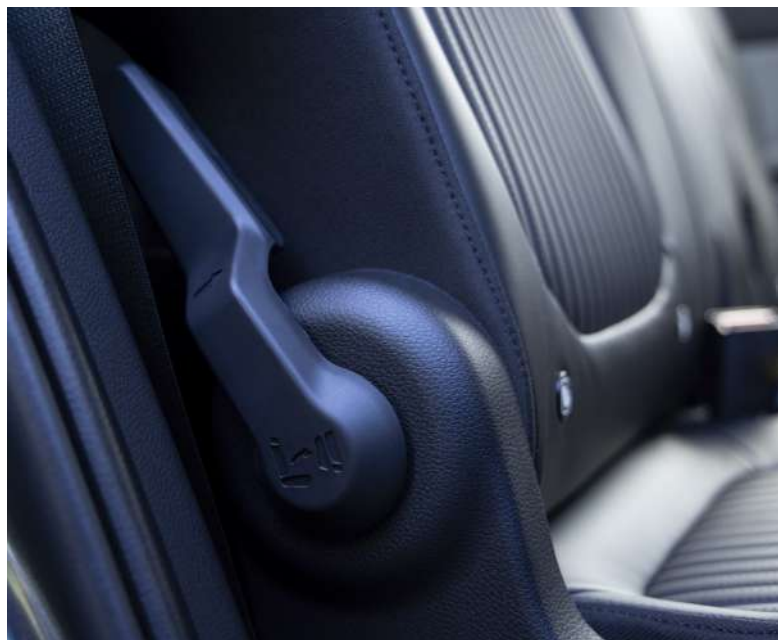


*Specification varies by model. Please consult your Kia dealership to confirm all specification.



Panoramic Display

Enjoy seamless connectivity and entertainment with the wide, dual panoramic display, which integrates a 12.3-inch infotainment screen with a 12-inch TFT digital cluster. Designed for intuitive use, it keeps everyone connected and engaged throughout the drive.



Effortless third-row access

Every seat is easily accessible with one-touch tumble functionality, allowing quick and simple access to the third row.



Roof Mounted Air Vents

Experience superior climate comfort with roof-mounted air vents that deliver cool, gentle airflow to every seat, keeping the whole family comfortable.



Power up on the go

Stay effortlessly connected and powered with an integrated wireless charger, which keeps devices charged without the clutter of cables, perfect for busy families on the go.



*Specification varies by model. Please consult your Kia dealership to confirm all specification.

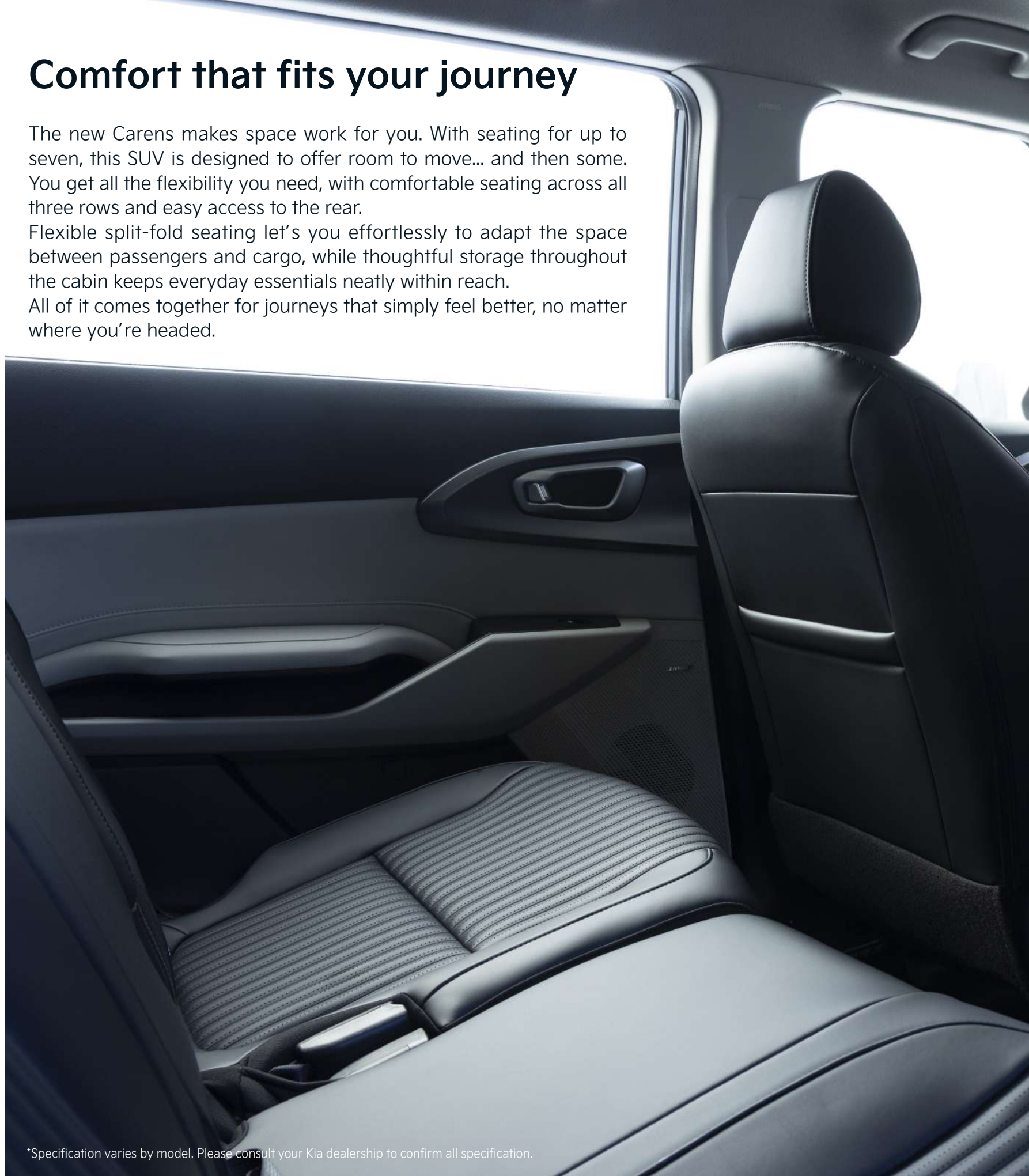


Comfort that fits your journey

The new Carens makes space work for you. With seating for up to seven, this SUV is designed to offer room to move... and then some. You get all the flexibility you need, with comfortable seating across all three rows and easy access to the rear.

Flexible split-fold seating let's you effortlessly to adapt the space between passengers and cargo, while thoughtful storage throughout the cabin keeps everyday essentials neatly within reach.

All of it comes together for journeys that simply feel better, no matter where you're headed.



*Specification varies by model. Please consult your Kia dealership to confirm all specification.

Efficient power in motion

In South Africa, the Kia Carens will be offered exclusively with the brand's 1.5-litre diesel engine, producing 85kW at 4,000rpm and 250Nm between 1,500 and 2,750rpm. It offers a well-judged balance of performance and efficiency, making it ideally suited to everyday driving. It offers enough power for confident acceleration and smooth driving across a variety of conditions.

The Kia Carens ensures steady performance, making the drive feel consistent and easy to manage along a Mcpherson strut front suspension configuration for passenger comfort. Paired with a 6-speed AT, the transmission delivers a smooth and seamless driving experience, well-suited for every terrain.

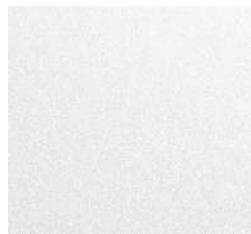


Make it yours

With six exterior colours to choose from, you can make a statement that's uniquely yours. Each is crafted to make a bold statement on the road.



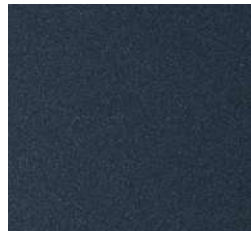
Glacier White Pearl



Ivory Silver Gloss



Pewter Olive



Imperial Blue



Gravity Gray



Aurora Black Pearl





* Images may show features not available in South Africa and are included for illustrative purposes. Specification varies by model. Please consult your Kia dealership to confirm all specification.

Sophisticated technology for everyone's safety

The Carens has been designed without compromise when it comes to safety. All derivatives come equipped with a comprehensive safety package, incorporating advanced driver assistance systems that enhance confidence and ease on every journey.

This is complemented by a full suite of airbags, including driver, passenger, front thorax and curtain airbags - all providing all-round occupant protection.



Lane Keep Assist (LKA) & Lane Follow Assist (LFA)

LKA prevents you from accidentally drifting from the lane and LFA enhances driving convenience by helping to keep the vehicle centred in its lane



Smart Cruise Control (SCC)

SCC helps you to drive at a preset speed while maintaining a safe distance from the vehicle ahead. In stop-and-go traffic, it automatically brings the Carens to a stop, then resumes when the vehicle ahead accelerates.



Surround View Monitor (SVM)

See it all, from every angle. The Surround View Monitor gives you a 360-degree bird's-eye view of your surroundings, perfect for navigating tight trails or crowded city streets.

Electric Parking Brake (EPB) with Auto Hold

EPB automatically holds the vehicle in place when stationary, reducing driver effort in stop-and-go traffic and on inclines.



Electric Parking Brake (EPB) with Auto Hold

EPB automatically holds the vehicle in place when stationary, reducing driver effort in stop-and-go traffic and on inclines.



Hill Start Assist Control (HAC)

HAC prevents the vehicle from rolling backwards when pulling away on an incline, giving the driver added confidence and control.



Anti-lock Braking System (ABS) with Electronic Stability Control (ESC)

ABS prevents wheel lock-up under braking and helps maintain vehicle control by automatically correcting loss of traction or skidding during sudden manoeuvres.

The Kia Carens is offered in four model derivatives including LS, LX, EX and SX. All models utilise the same 1.5-litre engine, each variant offering a tailored level of standard specification to ensure there is a Carens that matches every family's needs and price point.





Kia Carens LS

LS models are available exclusively with the six-speed manual gearbox and are fitted with 16-inch Styled wheels and feature LED rear combination lamps. The interior is well equipped with a driver's seat that is height adjustable as well as cloth and artificial leather upholstery, a centre armrest with integrated storage box and manual air conditioning. An eight-inch infotainment display with wireless Apple CarPlay and Android Auto functionality as well as Bluetooth with voice recognition and a six-speaker sound system takes care of the infotainment. Ahead of the driver is a Supervision 4.2-inch TFT LCD cluster and assisting with parking is a rear park distance warning system.

Kia Carens LX

The Carens LX steps things up with the six-speed automatic transmission, 17-inch Crystal Cut dual-tone alloy wheels, body coloured door handles and roof rails. The interior gains a back seat panel with a pocket, artificial leather upholstery, cruise control and a wireless smartphone charger.

Kia Carens EX

EX derivatives gain additional specification over the LX in the form of LED daytime running lights, a smart key fob with push button start, 12.3-inch infotainment display and front park distance warning.

Kia Carens SX

The top of the range Kia Carens SX ups the ante with electric driver seat adjustment and electronic lumbar support, smart cruise control with stop & go functionality, electric windows with safety control for the driver and passenger and front heated seats with three-level control. Ahead of the driver is a larger Digital 12" TFT integrated LCD cluster display and a Bose premium sound system that includes a total of 8 speakers is ready to keep passengers entertained.

The SX also adds a long list of innovative ADAS features to the standard safety offering, including a Surround View Monitor, Blind-Spot View Monitor, Blind-Spot Collision avoidance at the rear, Lane Keeping Assist, Forward Collision-Avoidance Assist and Lane Following Assist.

Standard Specifications: Kia Carens

MODEL	LS	LX	EX	SX
DRIVE TRAIN CONFIGURATION	2WD			
TRANSMISSION	6MT	6AT	6AT	6AT
EXTERIOR DIMENSIONS				
Overall length x width x height (mm)	4550 x 1800 x 1734			
Wheelbase (mm)	2780			
Wheel tread	1575 (205/65R16), 1563 (215/55R17)			
Overhang (front/rear) (mm)	830/940			
POWERTRAIN & DRIVETRAIN				
Engine Type	In-line 4 cyl, 16 valve HLA			
Displacement (cc)	1493			
Valve system	16-Valve HLA			
Maximum Power (Kw @ rpm)	85 kW @ 4,000 rpm			
Maximum Torque (Nm/rpm)	250 Nm @ 1,500-2,750 rpm			
Compression ratio	16.0 : 1			
Bore x stroke (mm)	75.0 X 84.5			
Fuel System	Common Rail Direct Injection (CRDI)			
Fuel Type	Diesel (10ppm - 50ppm)			
Fuel Consumption l/100km MT/ AT	5,0L/5,3L (Combined)			
Acceleration (0-100km/h) MT/AT	12,0/13,1			
Maximum Speed (km/h) MT/AT	175/170			
CO2 emissions (g/km) - Combined	133 (MT)/ 139 (AT)			
CHASSIS & CAPABILITY				
Ground clearance (mm)	180			
Curb Weight (max kg) 2WD/4WD	1462/1488			
Gross Vehicle Mass (GVM) (kg) MT/AT	2020/2050			
Gross Combination Weight (kg) 2WD/4WD	2800 (To be confirmed once new eNaTIS numbers are issued)			
Tow mass (kg) - Braked / Unbraked	(M/T) 780kg, (A/T) 750kg (awaiting official confirmation letter from India RHQ)			
Fuel Tank Capacity (l)	45			
Front brakes	Disc (381mm)			
Rear brakes	Disc (355mm)			
Front Suspension	McPherson strut			
Rear Suspension	Coupled torsion beam			
Steering Type	MDPS (DC)			
WHEELS & TYRES				
Wheels	16" Styled	17" Alloy	17" Alloy	17" Alloy
Tyre Size	'205/65R16	'215/55R17	215/55R17	215/55R17
EXTERIOR				
Auto Light Control	X	X	X	X
Halogen Headlamps (Bi-function projection)	X	X	X	-
High-Mounted Stop Lamp	X	X	X	X
LED Daytime Running Lights	-	-	X	X
LED multi-focus reflector Headlamps	-	-	-	X
LED High-Mounted Stop Lamp	-	X	X	X
LED Rear Combination Lamp	X (LED+Bulb)	X	X	X
Mud Guards	X	X	X	X
Auto-folding Side Mirrors	-	X	X	X
Outside handle - body color	X	X	X	X
Roof rack	-	X	X	X
INTERIOR DIMENSIONS				
Leg room (Front / 2nd Row/ 3rd Row)	1,031 / 928 / 898			
Head room (Front / Rear)	1,062 / 1,045 / 935			
Shoulder room (Front / Rear)	1,421 / 1,441 / 1,317			
Hip room (Front / Rear)	1,360 / 1,350 / 1,062			
INTERIOR FEATURES				
Overhead console lamp	X	X	X	X
2nd & 3rd row roomlamp	X	X	X	X
Artificial leather steering and gear knob	-	X	X	X
Remote steering controls	X	X	X	X
60:40 Split Back Folding For 3 Passengers 2nd Row	X	X	X	X
Sunvisor with vanity mirror - (Passenger)	-	X	X	X
50:50 Split Back Folding 3rd Row	X	X	X	X
Sunvisor with vanity mirror - (Driver)	-	X	X	X
Driver seat height adjustment	X	X	X	X
Back seat panel with pocket (Driver & Passenger)	-	X	X	X
Electric driver seat adjustment (Power driver)	-	-	-	Driver
Seat material	Cloth & Artificial Leather	Artificial Leather	Artificial Leather	Artificial Leather
Electronic Lumber support	-	-	-	Driver
COMFORT & CONVENIENCE				
Battery Saver System	X	X	X	X
Smart Key (FOB) with button start	-	-	X	X
Centre console armrest with integrated storage box	X	X	X	X
Air-Conditioner	Manual	Manual	Automatic Single Zone	Automatic Single Zone
Rear Air Conditioner Manual Control	X	X	X	X
Electric window control	FR/RR	FR/RR	FR/RR	FR/RR
Cruise control (Conventional)	-	X	X	-
Smart Cruise Control with Stop & Go	-	-	-	X
Electric windows - Safety Control (Driver and Passenger)	-	-	-	X
Front Heated Seats (3-Level Control)	-	-	-	X

TECHNOLOGY & INFOTAINMENT				
8" AV infotainment display	X	X	-	-
12.3" AV infotainment display	-	-	X	X
Front USB port	X	X	X	X
Wireless Apple CarPlay & Android Auto	X	X	X	X
Bluetooth W/Voice Recognition + Audio Remote Control	X	X	X	X
Front USB Charger	X	X	X	X
Front USB Charge Ports	X	X	X	X
Supervision 4.2" TFT LCD cluster	X	X	X	-
Digital 12" TFT intergrated LCD cluster display	-	-	-	X
Wireless Charger for Smart Phone	-	X	X	X
Speakers + Tweeter	6	6	6	8
Ambient mood lighting	-	-	-	X
Speakers and Tweeters with External Amplifier + Centre(Front)	-	-	-	X
Bose Premium Sound System	-	-	-	X
SAFETY, SECURITY & DRIVER ASSISTANCE SYSTEMS				
ABS (Anti-lock Braking System)	X			
EPB (Electric Parking Brake with Auto Hold Function)	X			
ESC (Electronic Stability Control)	X			
HAC (Hill Start Assist Control)	X			
Airbags	Driver & Passenger Front + Front Thorax + Curtain			
Data Dot	X			
Central locking with immobiliser	X			
Rear View Camera	X			
Isofix (child anchors)	X			
Child Lock (Manual)	X			
Seat belt height adjustment	-	X	X	X
MSLA (Manual Speed Limit Assist)	-	X	X	X
PDW (Parking Distance Warning)	Rear	Rear	Front & Rear	Front & Rear
EPB (Electric Parking Brake with Auto Hold Function)	-	-	-	X
SVM (Surround View Monitor)	-	-	-	X
BVM(Blind-Spot View Monitor)	-	-	-	X
BCA (Blind-Spot Collision-Avoidance Assist); Rear	-	-	-	X
LKA (Lane Keeping Assist); Line/Road-Edge	-	-	-	X
FCA (Forward Collision-Avoidance Assist)	-	-	-	X
LFA (Lane Following Assist)	-	-	-	X
WARRANTY & SERVICE ROADSIDE ASSISTANCE				
Warranty	5-year / Unlimited Kilometre			
Service Plan	3-year / 45,000km			
Roadside Assistance	5-year / Unlimited Kilometre			