



Go Further

FORD COMMERCIAL RANGE

TRANSIT AND TRANSIT CUSTOM

Ford



TRANSIT CUSTOM



Compact? That’s an optical illusion.

It’s larger on the inside than it looks on the outside. Short Wheelbase (SWB) (4 972mm) derivatives can carry items up to 3m long or three pallets, while Long Wheelbase (LWB) (5 339mm) models have even more space. An integrated roof-rack is optional.



Extra loadspace

With 8.3m³ of cargo space in the High Roof Long Wheelbase (LWB) (3 300mm), load height of 1778mm and the ability to carry standard 8 x 4 boards face down or standing, the **TRANSIT CUSTOM** is as practical as it is stylish.



Van SWB (4 972mm)

Panel Van L1 (SWB) - Available in Sport Van only



Van LWB (5 339mm)

Engineered for durability. Tested for toughness.

Like all Ford **TRANSITS**, the **TRANSIT CUSTOM** has durability in its DNA. A relentless testing program ensures that it's a vehicle that lasts.



Proven Duratorq diesel engine technology

Renowned for its reliability and efficiency, the **TRANSIT CUSTOM**'s 2.2L Duratorq TDCi engine comes with a choice of two power and torque outputs.

- 74kW/310Nm
- 92kW/350Nm

Multi-piece bumpers

Smart front and rear bumpers feature a multi-piece design to help keep repair costs low.

Tested for endurance

Extensive testing included a two-month maximum speed test and demanding low-speed city drive cycles to imitate typical unforgiving delivery schedules.



Pushed to extremes

From frost-covered prototypes started up in -40°C at 4 500m altitudes, to sun-baked vehicles towing fully laden trailers up long inclines in 50°C heat, **TRANSIT CUSTOM** has been pushed to extremes.



300 000 door shuts

We opened and closed the doors and bonnet over 300 000 times in real-world conditions to help ensure they will not let you down.

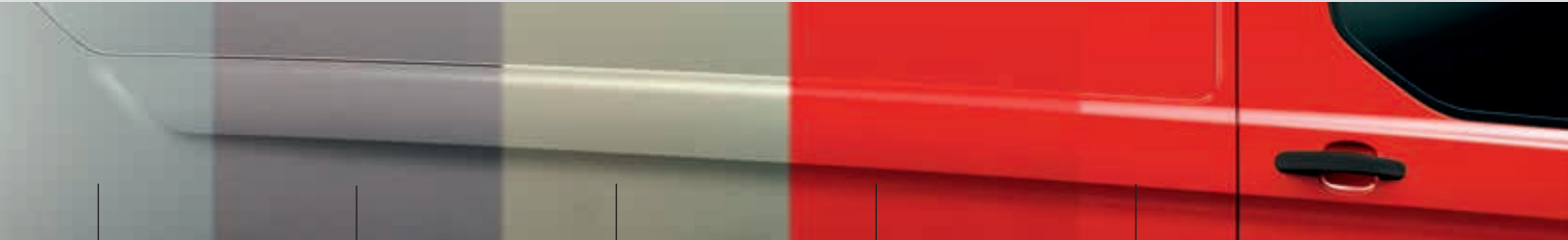


Obsessively driven

During its development, we test-drove the **TRANSIT CUSTOM** for hundreds of thousands of kilometers. It's a van you can rely on, right down to the smallest ball bearing.

5-year Corrosion Warranty

The **TRANSIT CUSTOM** owes its durable exterior to a thorough multi-stage painting process. From the wax-injected steel body sections to the water-based top coat, new materials and application processes ensure it is not only virtually solvent-free, but will also retain its good looks for many years to come. For more details, please refer to warranty guide.



- Zinc coating
- Phosphate spray coat
- Electrocoat
- Water-based top coat
- Clearcoat lacquer

Advanced protection, inside and out.

A full line-up of passive and active safety features makes use of the latest technology to protect the driver, passengers and their belongings.

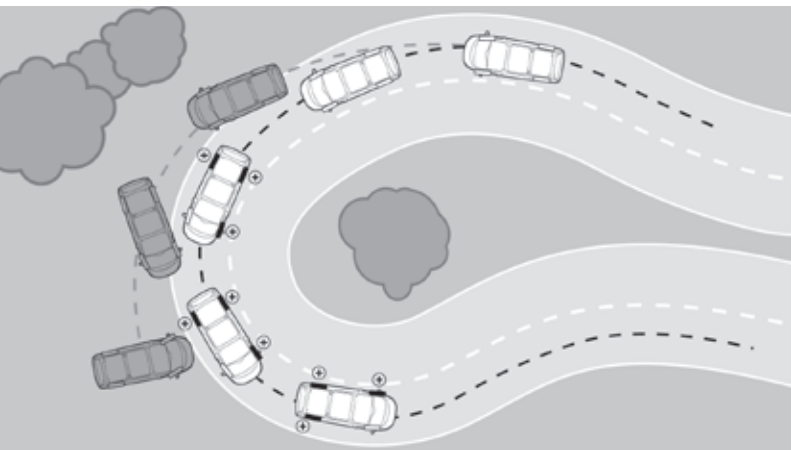
Impressive towing ability°

With towing capacity of between 1300kg – 1800kg*, the **TRANSIT CUSTOM** offers impressive pulling power along with a range of safety features to help keep you and your trailer secure. From Hill Launch Assist (HLA) to Trailer Sway Control (TSC), you can tow with confidence and enjoy a safe and rewarding drive.

°Available on **TRANSIT** and **TOURNEO CUSTOM**.
*Braked towing mass shown.

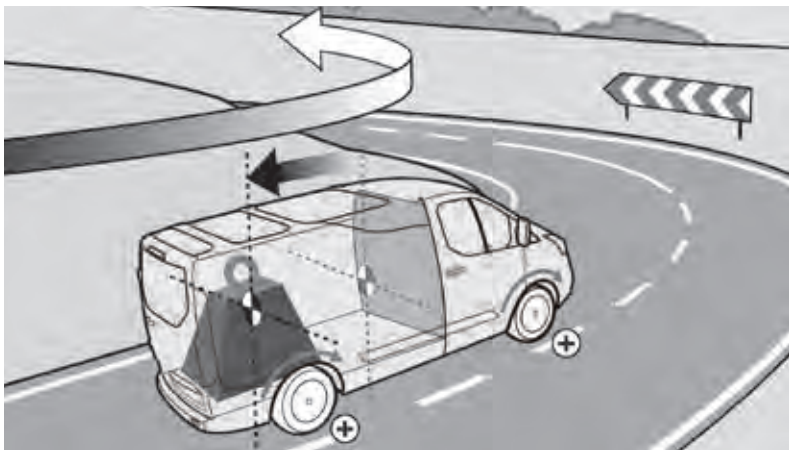


Towbar not standard.
European model shown. Specs may vary –
see specification sheets.



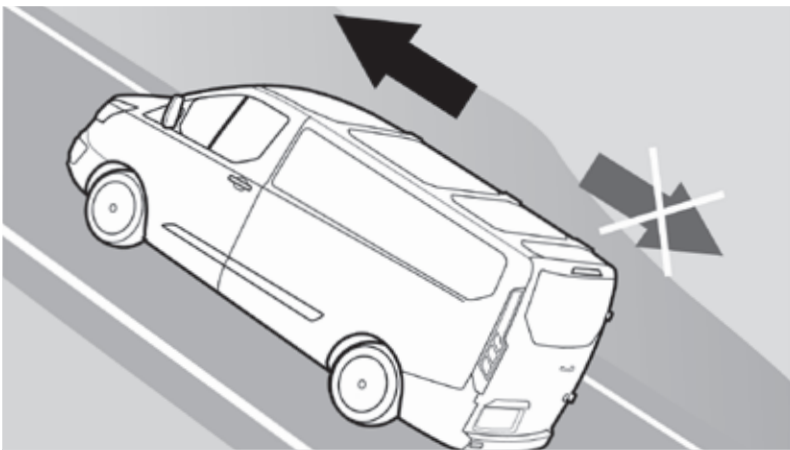
Electronic Stability Programme (ESP)°°

ESP is designed to help you maintain control in extreme driving conditions. It senses when you are deviating from your chosen lane and aims to keep you on track by automatically regulating braking and engine output.



Load Adaptive Control°°

Designed to adjust the responses of the ESP system to compensate when the vehicle is unladen, or partially or fully laden.



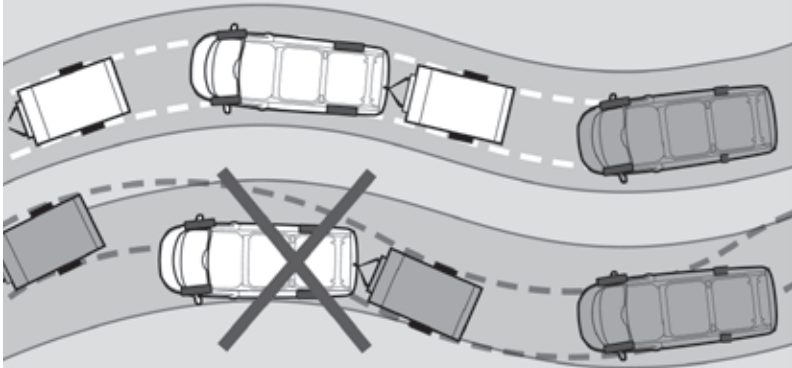
Hill Launch Assist°°

Designed to temporarily prevent you from rolling down a hill when you move your foot from the brake pedal to the accelerator pedal. It works in forward and reverse gears, so it's ideal for towing and pulling heavy loads.

Trailer Sway Control*°

When it detects trailer sway, the system is designed to reduce engine torque and apply the brakes to the appropriate wheel(s) to help restore control.

*Standard with towbar fitted at Dealer



Traction Control System°

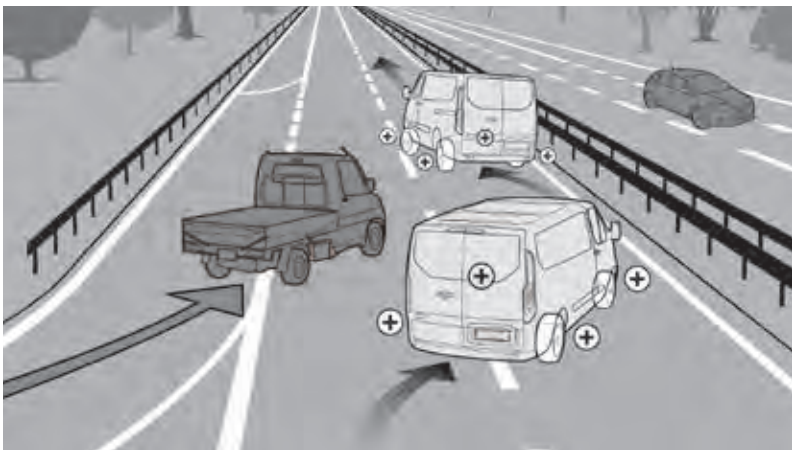
If wheel slip is detected at low speed, this system can distribute more torque to the wheel with most traction.

Emergency Brake Assist°°

Designed to recognize an emergency braking situation and increase the pressure within the braking system to provide extra stopping power.

Emergency Brake Warning°

Front and rear indicators automatically flash during heavy braking, giving other drivers advanced hazard warning.



Rollover Mitigation°°

Designed to identify a potentially dangerous driving situation and activate the ESP to restore stability.

Smart solutions for classic challenges.

Using fresh thinking and inspired design, the **TRANSIT CUSTOM** has solved many of the usual transportation issues.



TRANSIT CUSTOM Van bodystyles.

Available as a Van and Kombi Van, with a Short Wheelbase (SWB) or Long Wheelbase (LWB), there's a van style to match your business.



Extra loadspace

There's no compromise in the most vital consideration for your work: maximizing your loadspace and the ease with which you can use it.

- 6m³ of space
- Three pallet capability
- 3m load length with load-through bulkhead
- Side-mounted cargo tie-down points
- Half-height hardboard lining

Underseat storage compartment

The front dual passenger seat cushion flips up to reveal a hidden compartment that's large enough to hold a toolbox. (Standard)



Retractable roof-rack

Holds 130kg of cargo and, when not in use, folds level with the roof line to improve fuel economy and reduce wind noise. Available as an accessory.



TOURNEO CUSTOM



International model shown. Specs may vary – see specification sheets.

Share the memories.

With a multitude of flexible seating configurations, **TOURNEO CUSTOM** helps to make every outing unforgettable.

Making every drop of fuel count.

Ford Technology, combined with efficient aerodynamics, has resulted in outstanding fuel economy across the range.



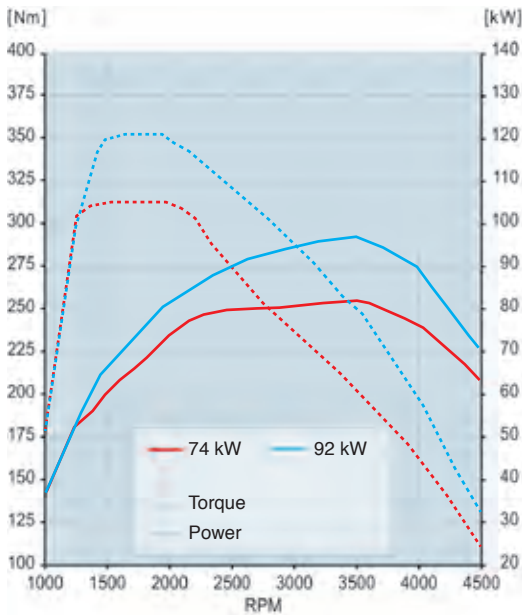
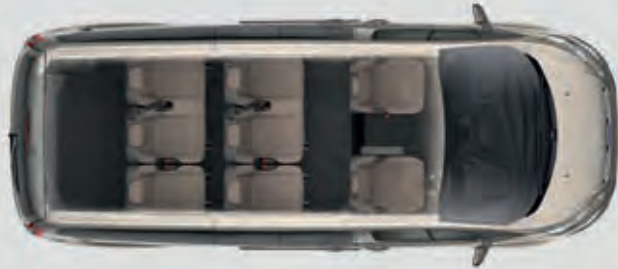
International model shown. Specs may vary – see specification sheets.

TOURNEO CUSTOM SWB 8 seats (4 972mm)



SWB Bus - Available in Limited spec only

TOURNEO CUSTOM LWB 8 seats (5 339mm)



Impressive CO₂ emissions.

The Duratorq TDCi diesel engines are remarkably fuel-efficient, with combined fuel consumption from as low as 6.5l/100km and CO₂ emissions of only 172g/km.

Power and torque

The **TOURNEO CUSTOM**'s 2.2l Duratorq TDCi diesel engine is available in two power and torque configurations:

- 74kW/310Nm
- 92kW/350Nm

Transmission is 6-speed manual across the range.

A standard front-wheel-drive configuration pays dividends for you, passengers and your cargo. Take advantage of generous headroom and greater payload, improved fuel economy and even more lower load floor for extra cargo space and easy access.



UK model shown. Specs may vary – see specification sheets.

Flexible rear seats with tilt function

Each seatback can fold forward to create a flat workspace. The whole seat can fold forward again to take up minimal space. For more room, each seat can be removed. The flexibility of this new seating system can create over 30 different seating and loadspace configurations to suit any occasion.



As flexible as you need it to be

Whatever you're carrying, from passengers and luggage to unexpected loads, the **TOURNEO CUSTOM** is versatile enough to find space for them all. Use all seven or eight seats to accommodate occupants in luxurious comfort. Or fold, tumble or stow the second- and third-row seats in more than 30 different ways to create limousine-like space or to maximise the luggage area.



8-seater model shown above.



Smart

Smart solutions.

The generously proportioned interior of the **TOURNEO CUSTOM** unites space with smart versatility. It can carry up to eight in complete luxury, or be easily reconfigured to offer up to 6.8m³ (SAE) of luggage space.



Retractable roof-rack

Holds 130kg of cargo and, when not in use, folds level with the roof line to improve fuel economy and reduce wind noise. Available as accessory.



UK LWB model shown – Sub Saharan Africa specs may vary – see specification sheets.



ISOFIX child-seat fixing points

For enhanced passenger safety, 3 ISOFIX child-seat attachment points are available on the centre and driver's side seats of the second row, and the centre seat of the third row.



Shift Indicator

Advises you when to change gear for maximum fuel efficiency. (Standard)



Running boards

Make getting in and out even easier, while enhancing **TOURNEO CUSTOM**'s luxurious style.

No problem.

Combining high carrying capacity with dependable power and low fuel consumption, the **TRANSIT** has an insatiable appetite for hard work.



International model shown. Specs may vary – see specification sheets.

TRANSIT RANGE



UK model shown.

The foundation for your business

The **TRANSIT SINGLE CHASSIS CAB** combines the strength of a heavy truck with the agility of a light commercial vehicle to provide unbeatable support for your business.

Enhanced cargo space

With more space, more convenience and greater practicality, the **TRANSIT** clearly means business. Offering up to 15.1m³ of loadspace in the new Extended Long Wheelbase (ELWB) van, plus room for up to 5 Europallets, it cuts even the biggest jobs down to size.



Anywhere you like.

With two frame lengths, a range of Gross Vehicle Mass (GVM) from 3 300kg to 4 700kg, and a choice of front-wheel drive and rear-wheel drive powertrain configurations, the **TRANSIT** is prepared for almost any challenge that comes its way.



Large body door mirrors

Standard-width door mirrors accommodate body sizes up to 2 170mm. Large blind-spot mirrors are incorporated for excellent visibility.



Towing ability

Ford **TRANSIT**'s appetite for hard work extends beyond its loadspace. The **TRANSIT VAN** and **TRANSIT SINGLE CHASSIS CAB** versions with high-rated suspension and 7 000kg Gross Train Mass (GTM) can pull up to a maximum 3 500kg tonnes of braked trailer load.



Engineered for durability. Tested for toughness.

Like every Ford commercial vehicle before it, the **TRANSIT** has durability in its DNA. A relentless testing program ensures that it's a vehicle built to last.

Tow with confidence

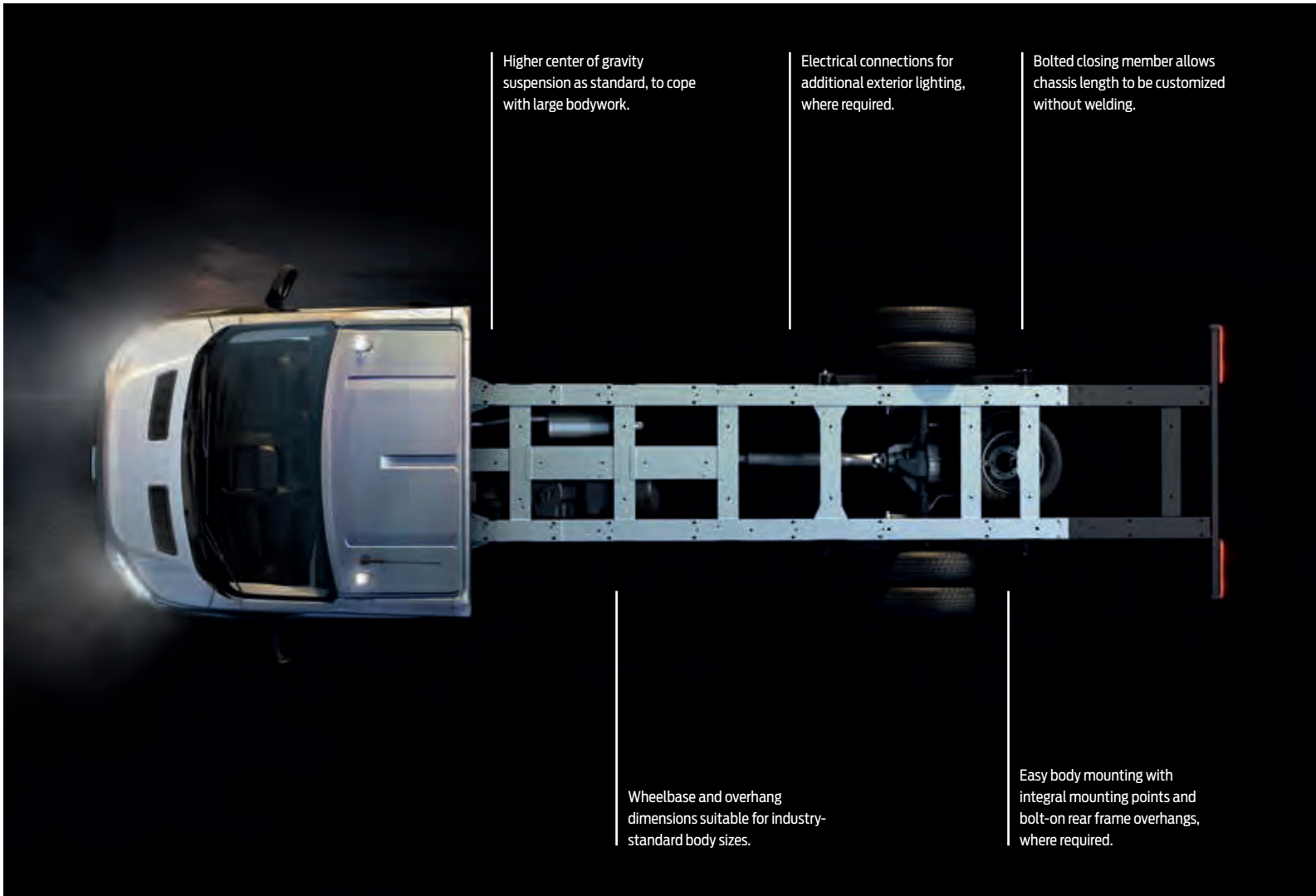
We condensed an equivalent of over 240 000km of extreme driving into a six-month test over different road conditions, most of which was spent towing a fully-laden trailer. The **TRANSIT** passed with full marks.

5-year perforation warranty

The **TRANSIT** owes its durable exterior to a thorough multi-stage painting process. From the wax-injected steel body sections to the hard-wearing top coat, new materials and application processes ensure it will retain its good looks for many years to come.

Chassis design

Throughout the design process, Ford has worked closely with the body-building industry to ensure that all standard body types, and most specialist conversions, can be fitted with little or no modification required.



Pushed to extremes

From frost-covered prototypes started up in -40°C at 4 500m altitudes, to sun-baked vehicles towing fully-laden trailers up long inclines in 50°C heat. The **TRANSIT** has been pushed to extremes.



Obsessively driven

During its development, we test-drove the **TRANSIT** the equivalent of 5 million km, including 400 000km with real customers. It's a vehicle you can rely on, right down to the smallest ball bearing.

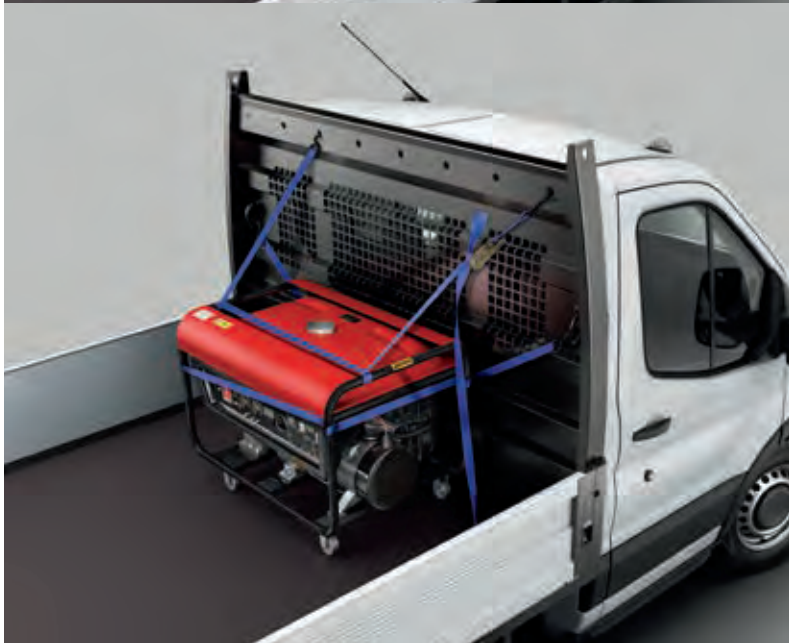
Ready for work.

Your **TRANSIT** is ready for work the moment you take delivery. Fully equipped inside and out, it offers all the right tools to make loading, unloading and managing your payload as easy as possible.



Even better ride and handling

The **TRANSIT**'s renowned driving qualities have been fine-tuned with stiffer suspension mounting bushes and brackets, and a newly-designed anti-roll bar.



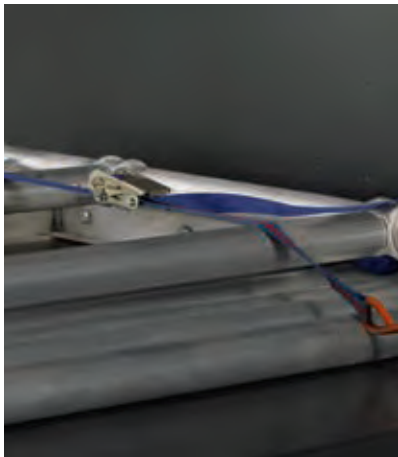
Heavy-duty headboard

Substantial all-steel powder-coated headboard provides protection to the cab and its occupants. Strong construction allows ladders and heavy items to be secured with ease. Part of option Float on **TRANSIT SINGLE CHASSIS CAB**.



Loadspace lighting

New interior loadspace lights provide greater visibility when working inside the vehicle.



Load tie-downs

Pull-up load retention rings sit flush with the load platform when not in use.

Carries more, consumes less.

TRANSIT's engines are among the most efficient available. Combining reduced fuel consumption with lower CO₂ emissions, you'll enjoy reduced running costs today and enhanced residual values tomorrow.

TRANSIT ECONetic

Reduce your running costs and CO₂ emissions with **TRANSIT ECONetic**. Specially configured and powered by a uniquely calibrated 2.2l 92kW/350Nm Duratorq TDCi Stage V engines, and available with a choice of wheelbase lengths and GVWs, it delivers combined fuel economy figures that will satisfy the bottom line without compromising performance.



Note: UK model shown.



Ford ECONetic Technology

Ford ECONetic Technology combined with optimized aerodynamics has resulted in outstanding fuel economy across the range.

- Ford Duratorq TDCi advanced diesel engines – provide exceptional fuel economy and low CO₂ emissions.
- Ford Smart Regenerative Charging – maintains efficient battery charge levels which reduces overall fuel use.
- Economy – gearshift indicator light.
- Ford EcoMode – encourages economical driving behavior.

The availability of Ford ECONetic Technology varies by model. Please ask your Ford Commercial Dealer for details.

For more information on our sustainability initiatives visit ford.com/go/sustainability.



Green

Rear-wheel drive

- Superior traction when heavily laden.
- Best suited for heavier duty applications and towing.

Front-wheel drive

- Larger loadspace, extra interior height and lower load height.
- Lower kerb weight for greater payload and fuel efficiency.



CO₂ emissions

TRANSIT ECONetic's low CO₂ emissions from just 201g/km deliver tax, fuel and environmental benefits.

For more information on our sustainability initiatives visit ford.com/go/sustainability.

MWB Panel Van figures.

More efficient by design.

Combining high carrying capacity and maximum productivity, **TRANSIT** has the answer to all your transport needs.

Optimized loadspace and payload

The **TRANSIT** delivers exceptional load capacity. You'll find up to 13.8m³ of cargo space to fill. The flat load floor and near vertical side walls help you make the most of all that space, with room to carry loads of up to 4 374mm in length and up to 2 070mm in height. Access to the load area is quick and easy too, thanks to a wide-opening sliding side door, full-height rear doors that can be opened to a full 270° (standard on Long Wheelbase and Extended Body) and a built-in rear bumper step.

- 7.0m³ to 13.8m³ loadspace. Greater load cube allows more to be carried in a single journey for improved operating efficiency.
- 3 200mm and 4 374mm load lengths. Increased load lengths can accommodate standard-length items, like pipes, building boards and carpet rolls.



Fold-out table and underseat stowage compartment

The front dual passenger seat features a fold-out table, dual cup holders and an underseat stowage compartment large enough to hold a toolbox.



Overhead stowage system

The **TRANSIT** is equipped with plenty of useful in-cab storage areas, including a new full-width overhead stowage shelf.



Integrated rear bumper step

The rear bumper design incorporates an integral step for easy access to the loadspace.



Storage compartment with power point, AUX input and USB ports above instrument cluster

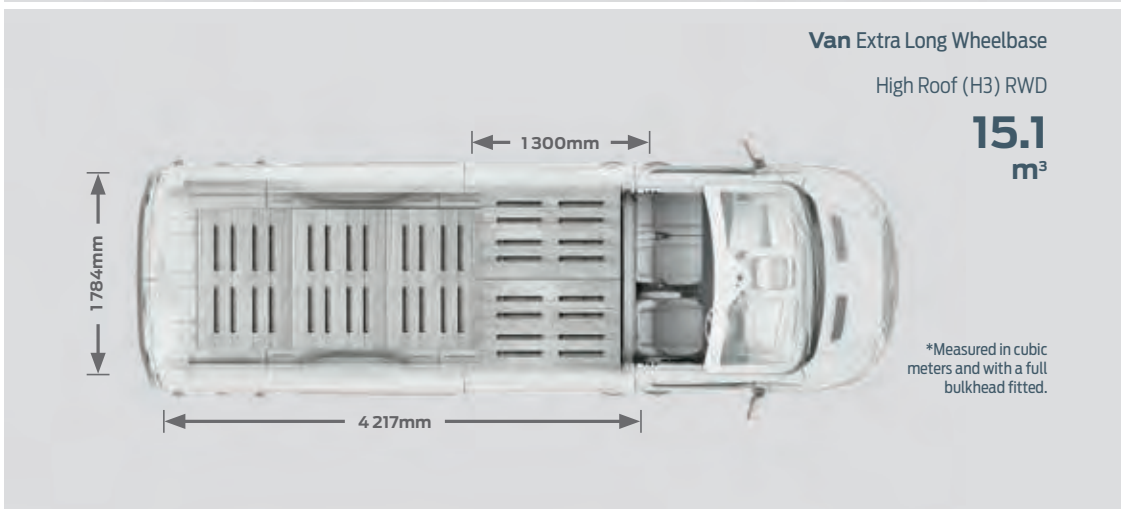
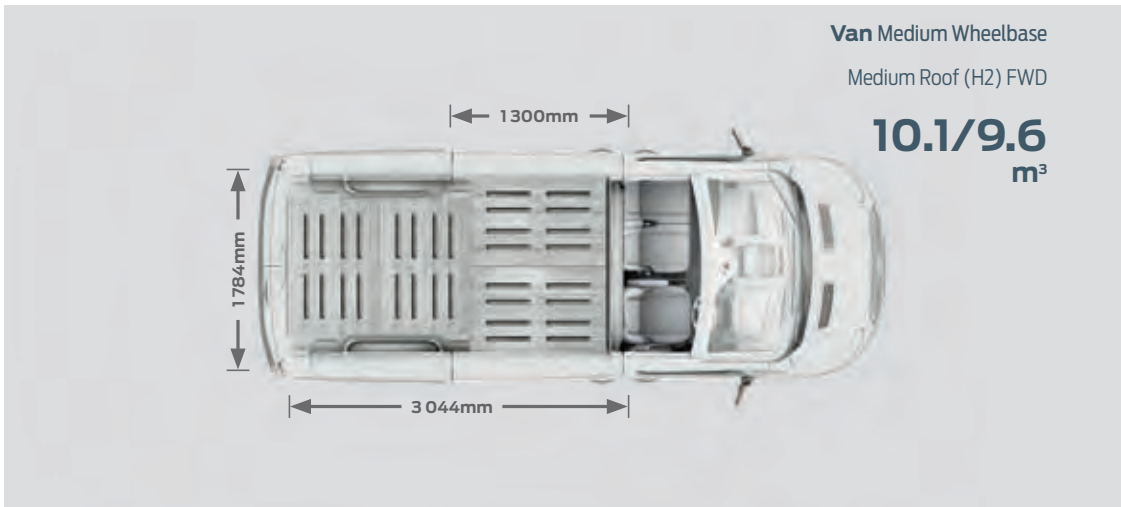
Cleverly concealed storage compartment for safe stowage of items.

Designed for hard work.

The ideal van for every job.

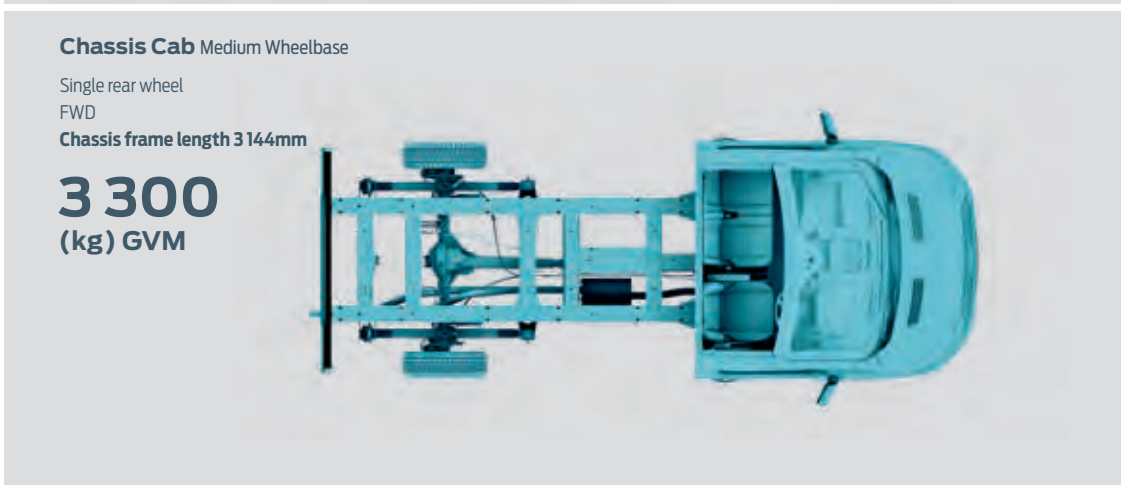
Whatever you need from a van, you'll find it in the **TRANSIT**. Three load lengths, two roof heights, larger load volumes and higher gross vehicle masses. Plus a choice of driveline configurations on selected models.

The **TRANSIT** clearly means business. With a choice of front-wheel drive and rear-wheel drive and Gross Vehicle Mass (GVM) between 3 300kg and 4 700kg, your specific need for load carrying space and capacity has been met.



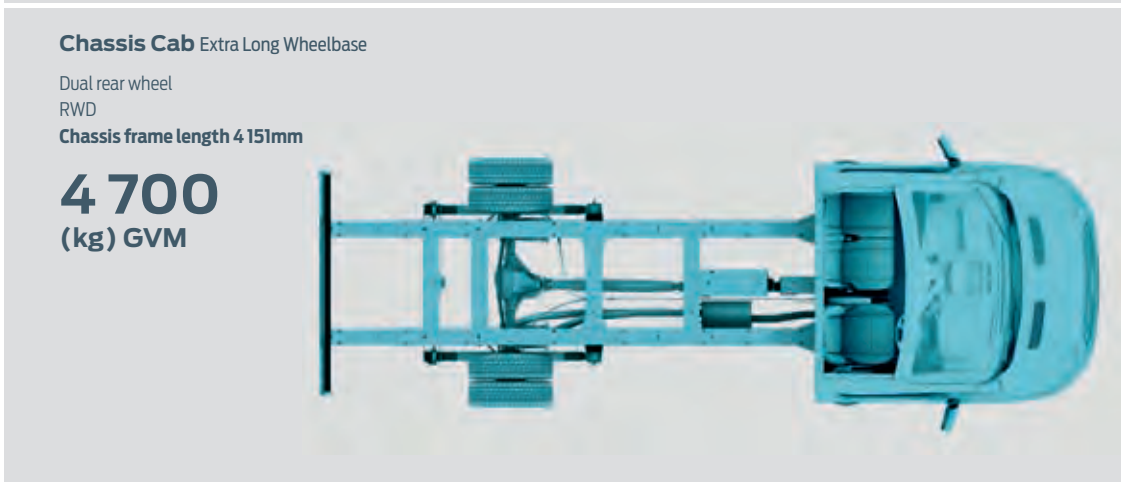
Van interior features

- Easy-clean rubber floor covering in cab
- Courtesy lights with theatre dimming
- Trip computer
- Economy – gearshift indicator light
- Driver's seat – 4-way adjustable
- Rake- and reach-adjustable steering column
- Dual passenger seats with fold-out table and underseat stowage compartment
- Electronically-operated front windows
- Remote central locking
- Full steel bulkhead
- x10(MWB) - x12(LWB) DIN 75410 compliant tie-down loops



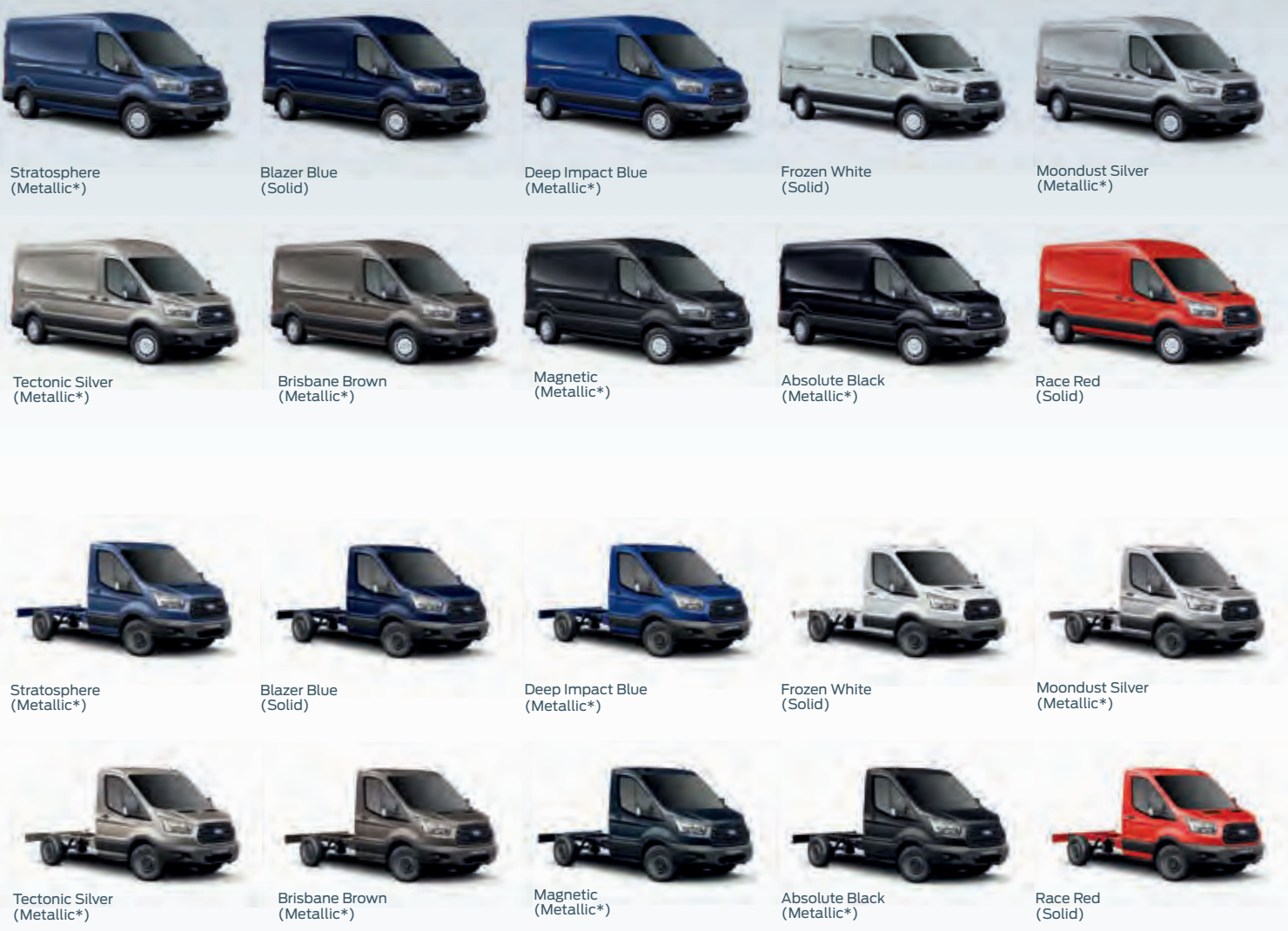
Chassis interior features

- Easy-clean rubber floor covering in cab
- Courtesy lights with theatre dimming
- Trip computer
- Economy – gearshift indicator light
- Driver's seat – 4-way adjustable
- Rake- and reach-adjustable steering column
- Dual passenger seats with lift-up seat stowage
- Electronically-operated windows
- Remote central locking



Make it yours.

TRANSIT and **CHASSIS CAB**. Choose the colour and trim that you think best reflects your business.



*Metallic body colours are optional, at extra cost.
Colours applicable to **TRANSIT VAN**, and **TRANSIT SINGLE CHASSIS CAB**.
Note: The images used are to illustrate body colours only and may not reflect the vehicle described. Colours and trims reproduced within this brochure may vary from the actual colours, due to the limitations of the printing processes used.

Wheels



Ambiente
16" Steel wheel - 205/60 R16
Aftermarket styled wheel cover shown - South African specs will vary - see specification sheets.

Wheels



6.5 x 15" Steel road wheels



6.5 x 16" Steel road wheels
Available on Kombi Van Ambiente and Ambiente Bus



7.5 x 18" Alloy Style1 LR1
Available on Sport Van

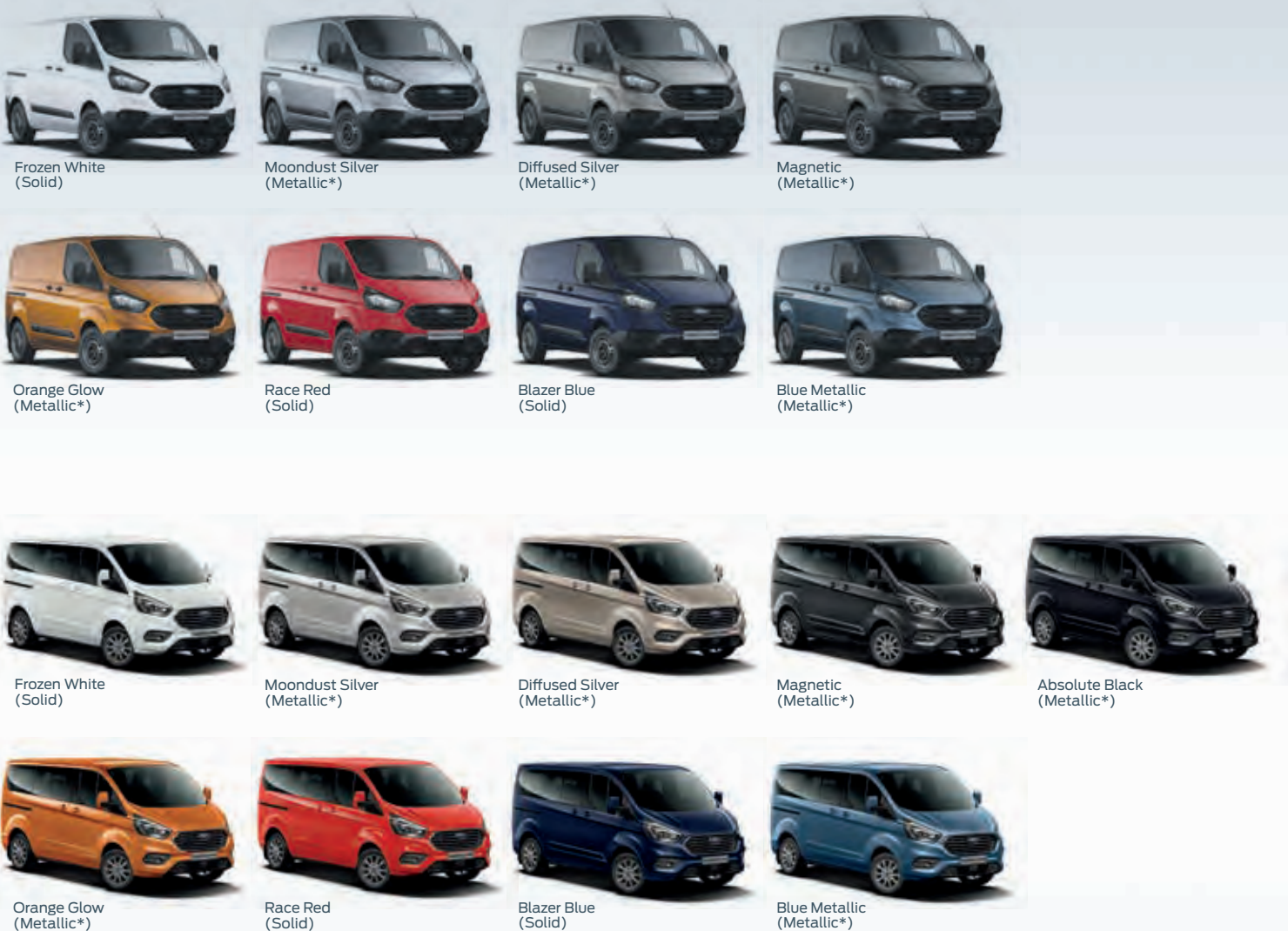


6.5 x 16" Alloy Style A
Available on Kombi Van Trend, Trend Bus and Limited bus

Ambiente wheels might vary depending on derivative. please refer to spec sheet for info.

Make it yours.

TRANSIT and **TOURNEO CUSTOM**. Choose the colour and trim that you think best reflects your business.



International model shown.



FORD CREDIT

As part of the Ford family, Ford **CREDIT** offers a number of unique finance products to make driving a new or used vehicle affordable and simple. Our Ford **OPTIONS** product is designed to allow you to drive a brand new Ford more often, with the peace of mind that we guarantee its future value.*

For more information regarding our products, speak to your Ford Dealer or go to www.ford.co.za/buying/ford-credit/home.

*Subject to T&Cs.



| FORD CREDIT

FORD PROTECT

Genuine parts. Genuine service.

Enjoy years of trouble-free motoring and preserve the value of your new Ford by fitting only genuine Ford parts and accessories. Servicing your new Ford at a Ford Dealer will also protect you and your vehicle warranty.



| FORD PROTECT

Business and Commercial Fleet Customers.

The Ford portfolio of products is growing rapidly to meet your business needs.

Please contact your local Ford Dealer for more information
or visit our website www.ford.co.za/fleet
or alternatively email us at fleetsa@ford.com.

Ford PROTECT

Ford **PROTECT** offers a holistic suite of service, maintenance, warranty and roadside-assistance products aimed at keeping your new Ford product in perfect working condition.

New Vehicle Warranty – Every new Ford product comes with a 4-yr/120 000km Comprehensive Warranty.

Corrosion Warranty – Cover lasts for 5-yr/unlimited km.

Roadside Assistance – Cover lasts for 3-yr/unlimited km cover for mechanical, electrical, flat tyres, batteries, medical emergencies and towing, if needed, to the nearest Ford dealership.

New Vehicle Extended Warranty – An Extended Warranty may be purchased prior to the expiry of the 4-yr/120 000km New Vehicle Warranty, giving owners an extra 2-yr/80 000km of worry-free driving.

TRANSIT CUSTOM

Service Plan – Every **TRANSIT CUSTOM Van** comes standard with a 6-yr/90 000km Service Plan, which covers all scheduled servicing except friction materials, i.e. brake pads and wiper blades.

TOURNEO CUSTOM

Service Plan – Every **TOURNEO CUSTOM** comes standard with a 6-yr/90 000km Service Plan, which covers all scheduled servicing except friction materials, i.e. brake pads and wiper blades.

*The declared fuel consumption and CO₂ emissions figures were achieved during technical laboratory testing in accordance with the legislated technical specifications (SANS 20101: 2006/ECE R101: 2005 as last amended) and validated and approved by the UK Vehicle Certification Authority (VCA). Fuel consumption and CO₂ emissions figures are used to compare different vehicle types under uniform conditions, and are not necessarily indicative of real-life driving conditions. Note that the actual fuel consumption and emissions levels will depend on many factors and are directly affected by the length of the journey; number of passengers and the amount of luggage carried; individual driving style; road conditions; weather conditions; vehicle age, mileage, condition and standard of maintenance; use of vehicle features such as air conditioning; and any modifications to the vehicle. Your fuel economy will vary based on these and other factors and, for these reasons, many drivers may not achieve the EU fuel economy figures in day-to-day driving, although the vehicle is technically capable of doing so.



Quality

We design and build your Ford to feel as good after many years of service as it did the day you picked it up. And to drive just as beautifully too.



Green

Using advanced Ford technology, we're committed to creating vehicles with improved fuel economy, reduced CO₂ emissions and a lower overall cost of ownership.



Safe

Ford's Intelligent Protection System uses sophisticated technology designed to help prevent an accident and, if one should happen, to protect you.



Smart

Vehicles with smart intuitive technologies designed to connect your world, and many clever solutions from Ford that make life a little easier.



TRANSIT CUSTOM

	VAN			KOMBI VAN	
	2.2 Ambiente LWB LP	2.2 Ambiente LWB MP	2.2 Sport SWB HP	2.2 Ambiente LWB MP	2.2 Trend SWB MP
Engine					
Type	Duratorq TDCi 2.2	Duratorq TDCi 2.2	Duratorq TDCi 2.2	Duratorq TDCi 2.2	Duratorq TDCi 2.2
Cylinders	4 in line	4 in line	4 in line	4 in line	4 in line
Displacement (cm³)	2 198	2 198	2 198	2 198	2 198
Power (kW @ rpm)	74 @ 3 500	92 @ 3 500	114 @ 3 500	92 @ 3 500	92 @ 3 500
Torque (Nm @ rpm)	310 @ 1 300	350 @ 1 450	385 @ 1 600	350 @ 1 450	350 @ 1 450
Bore and stroke (mm)	86 x 94.6	86 x 94.6	86 x 94.6	86 x 94.6	86 x 94.6
Fuel injection	Common-rail direct fuel injection	Common-rail direct fuel injection	Common-rail direct fuel injection	Common-rail direct fuel injection	Common-rail direct fuel injection
Fuel requirement	Diesel	Diesel	Diesel	Diesel	Diesel
Emission level	Euro Stage IV	Euro Stage IV	Euro Stage V	Euro Stage IV	Euro Stage IV
Transmission					
Type	6-speed manual	6-speed manual	6-speed manual	6-speed manual	6-speed manual
Performance					
Fuel economy – NEDC L/100km (combined cycle)*	7.0	7.3	6.6	7.1	6.9
CO ₂ emission – combined (g/km)*	186	192	174	189	178
Top speed km/h	157	157	157	157	157
Steering					
Type: rack-and-pinion steering with rack-mounted power assisted	Std	Std	Std	Std	Std
Hydraulic Power-Assisted Steering (HPAS)	Std	Std	Std	Std	Std
Turning circle (kerb-to-kerb) (m)	12.2	12.8	12.2	12.8	10.9
Turning circle (wall-to-wall) (m)	12.8	13.4	12.65	13.4	11.55
Suspension					
Front suspension: independent MacPherson struts, variable-rate coil springs, stabiliser bar and gas-pressurised shock absorbers	Std	Std	Std	Std	Std
Rear suspension: single leaf springs, gas-pressurised shock absorbers	Std	Std	Std	Std	Std
Torque Vectoring Control (TVC)	Std	Std	Std	Std	Std
Brakes					
Front ventilated discs	288mm x 33mm	308mm x 33mm	288mm x 33mm	308mm x 33mm	288mm x 33mm
Rear solid discs	288mm x 16mm	308mm x 16mm	288mm x 16mm	308mm x 16mm	288mm x 16mm
Anti-lock Braking System (ABS) with Electronic Brakeforce Distribution (EBD)	Std	Std	Std	Std	Std
Wheels and Tyres					
Wheels	15" Steel – 215/65 R15	16" Steel – 215/65 R16	18" Alloy – 235/50 R18	16" Steel – 215/65 R16	16" Alloy – 215/65 R16
Spare wheel	Conventional Steel	Conventional Steel	Mini Steel	Conventional Steel	Conventional Steel
Safety and Security					
Driver airbag	Std	Std	Std	Std	Std
Passenger airbag	Opt	Opt	Std	Opt	Opt
Electronic Brake Assist (EBA)	Std	Std	Std	Std	Std
Electronic Stability Programme (ESP)	Std	Std	Std	Std	Std
Hill Launch Assist (HLA)	Std	Std	Std	Std	Std
Load Adaptive Control	Std	Std	Std	Std	Std
Emergency brake warning	Std	Std	Std	Std	Std
Rollover Mitigation	Std	Std	Std	Std	Std
Trailer Sway Control (TSC) (activated when towbar fitted at Ford Dealer)	Opt	Opt	Opt	Opt	Opt
Centre high-mounted rear stop lamp	Std	Std	Std	Std	Std
Remote power central double locking	Std	Std	Std	Std	Std
Drive-away locking with crash unlocking	Std	Std	Std	Std	Std
Perimeter anti-theft alarm	Std	Std	Std	-	Std
Interior					
Seats					
Standard cloth seats	3	3	-	6	5
Sport seats (partial leather)	-	-	3	-	-
Occupant Restraints					
Front 3-point seatbelts with pre-tensioners and load limiter	Std	Std	Std	Std	Std
Beltminder – driver and passenger seats	Std	Std	Std	Std	Std
Windows					
Power windows with driver's one-touch down	Std	Std	Std	Std	Std



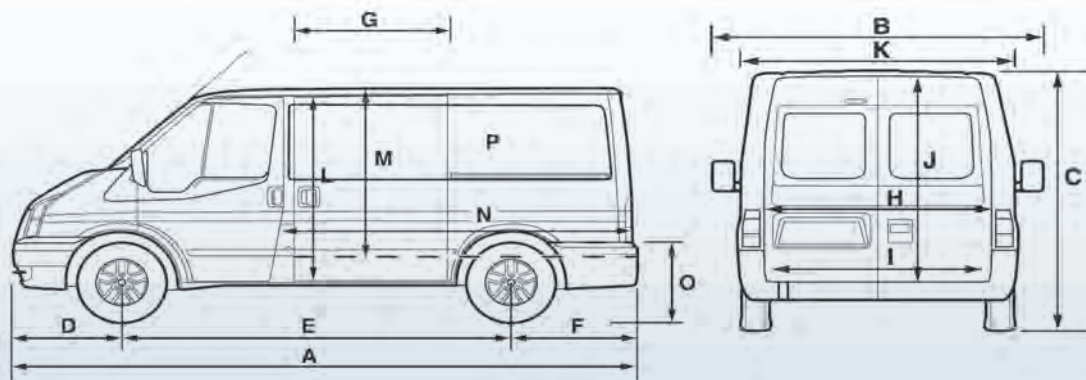
TRANSIT CUSTOM

	VAN			KOMBI VAN	
	2.2 Ambiente LWB LP	2.2 Ambiente LWB MP	2.2 Sport SWB HP	2.2 Ambiente LWB MP	2.2 Trend SWB MP
Interior (cont.)					
Interior Floor					
Partial load-floor cover – rubber-insulated, easy-clean	Std	Std	Std	-	-
Complete load-floor cover – rubber-insulated, easy-clean	-	-	-	Std	Std
Interior Roof					
Driver and passenger sun visor	Std	Std	-	Std	Std
Driver and passenger sun visor with illuminated vanity mirror	-	-	Std	-	-
Passenger folding grab handles	-	-	Std	-	-
Sunglass holder (driver) and overhead console	-	-	Std	-	-
Rear coat hooks (x2)	-	-	Std	Std	Std
Load Compartment					
Bulkhead – full width steel, unglazed with load-through facility	Std	Std	Std	-	-
Complete rear trim board	Std	Std	Std	-	-
Sealed easy-clean load floor	Opt	Opt	Std	-	-
DIN 75410 compliant tie-down loops	8	8	8	8	4
Load area protection kit	Opt	Opt	-	-	-
Stowage					
Bottle holder – twin 2-litre bottle capacity, fascia-mounted	Std	Std	Std	Std	Std
Glovebox storage capacity with lid – A4 file	Std	Std	Std	Std	Std
Map pockets – front door storage	Std	Std	Std	Std	Std
Storage compartment – driver's side on fascia top with lift-up lid	Std	Std	Std	Std	Std
Environmental Control					
Manual airconditioning – front, filter-air pollen purifier	Std	Std	Std	Std	Std
Heater – recirculation	Std	Std	Std	Std	Std
Gearshift					
Leather gearknob®	-	-	Std	-	-
Polyurethane (PU) gearknob	Std	Std	-	Std	Std
Steering Wheel					
Steering wheel – 4-spoke, polyurethane	Std	Std	-	Std	-
Steering wheel – 4-spoke, leather®	-	-	Std	-	Std
Instruments and Controls					
Trip computer (distance to empty, instantaneous and average fuel consumption, average speed, outside temperature)	Std	Std	Std	Std	Std
12V power point – located on instrument panel	Std	Std	Std	Std	Std
In-Car Entertainment (ICE)					
Radio; 2 speakers; steering-wheel-mounted audio controls; USB connector; Aux input; Bluetooth®	Std	Std	Std	-	-
Radio; 4 speakers; steering-wheel-mounted audio controls; USB connector; Aux input; Bluetooth®	-	-	Std	-	-
Radio; 6 speakers; steering-wheel-mounted audio controls; USB connector; Aux input; Bluetooth®	-	-	-	Std	Std
Cruise Control					
Cruise control	Opt	Opt	Std	Opt	Std
Adjustable Speed Limiter Device (ASLD)	Opt	Opt	Std	Opt	Std
Rear-view Mirror					
Rear-view parking camera (appears in rear-view mirror)	Std	Std	Std	Std	Std
Exterior					
Kerbside load door	Std	Std	Std	Std	-
Dual side sliding load doors	Opt	Opt	Opt	-	-
Running boards and dual side load doors	-	-	-	Opt	Std
Unglazed hinged rear doors, 180° opening, positive stop at 90° and click-lock functionality	Std	Std	Std	Std	Std
Front mudflaps	Std	Std	-	Std	Std
Rear mudflaps	Std	Std	-	Std	Std
Sport van styling kit – front lower bumper skirt with unique fog lamp bezel, body-colour side skirts, rear bumper skirt, exhaust trim, front and rear wheel-arch extensions	-	-	Std	-	-
Automated headlamps – halogen reflector lights (quad beam)	Std	Std	Std	Std	Std
Manual headlamp levelling	Std	Std	Std	Std	Std
Headlamps – daytime running lamps	Std	Std	Std	Std	Std
Front fog lamps	Std	Std	Std	Std	Std
Parking distance sensors – front and rear	Std	Std	Std	Std	Std
Trailer tow attachments	Opt	Opt	Opt	Opt	Opt



TRANSIT CUSTOM

	VAN			KOMBI VAN	
	2.2 Ambiente LWB LP	2.2 Ambiente LWB MP	2.2 Sport SWB HP	2.2 Ambiente LWB MP	2.2 Trend SWB MP
Dimensions (mm) – Exterior					
Overall length – A	5 339	5 339	4 972	5 339	4 972
Overall width with mirrors – B	2 290	2 290	2 290	2 290	2 290
Overall width with folded back mirrors	2 080	2 080	2 080	2 080	2 080
Overall width without mirrors – K	1 986	1 986	1 986	1 986	1 986
Overall height (height dimensions show the range from minimum to maximum of a fully laden vehicle to unladen vehicle) – C	1 909 – 2 022	1 909 – 2 022	1 900 – 2 020	1 909 – 2 022	1 900 – 2 020
Wheelbase – E	3 300	3 300	2 933	3 300	2 933
Front of vehicle to front wheel centre – D	1 011	1 011	1 011	1 011	1 011
Rear of vehicle to rear wheel centre – F	1 028	1 028	1 028	1 028	1 028
Side door entry width – G	1 030	1 030	1 030	1 030	1 030
Side load door entry height – L	1 320	1 320	1 320	1 320	1 320
Rear door/tailgate entry width – H	1 400	1 400	1 400	1 400	1 400
Rear door/tailgate entry height – J	1 340	1 340	1 340	1 340	1 340
Front track	1 745	1 745	1 745	1 745	1 745
Rear track	1 718	1 718	1 718	1 718	1 718
Ground clearance at centre	227 – 273	227 – 273	231 – 277	227 – 273	231 – 277
Ground clearance at front axle	159 – 176	159 – 176	160 – 175	159 – 176	160 – 175
Ground clearance at rear axle	119 – 137	119 – 137	118 – 137	119 – 137	118 – 137
Dimensions (mm) – Interior					
Maximum load space length (with bulkhead) – N	2 922	2 922	2 555	-	-
Maximum load space length (with load-through bulkhead) – N	3 452	3 452	3 085	-	-
Maximum load space length	-	-	-	1 944	1 577
Maximum load space width – K	1 775	1 775	1 775	1 775	1 775
Load space between wheel arches – I	1 390	1 390	1 390	1 390	1 390
Load floor to roof – M	1 406	1 406	1 406	1 406	1 406
Loading height (height dimensions show the range from minimum to maximum of a fully laden vehicle to unladen vehicle) – O	457 – 589	457 – 589	450 – 583	457 – 589	450 – 583
Load space (with bulkhead) – P	6.83/6.23 (m³)	6.83/6.23 (m³)	5.95/5.36 (m³)	-	-
Dimensions – Other					
Gross vehicle mass (kg)	3 100	3 325	2 900	3 325	3 100
Gross combined mass (kg)	4 400	5 125	4 600	5 125	4 600
Fuel tank (L)	80	80	80	80	80
Kerb weight (kg)	1 796	1 820	1 745	2 020	1 817
Gross payload (kg)	1 304	1 505	1 155	1 283	1 305
Towing mass (braked) (kg)	1 300	1 800	1 700	1 800	1 500
Towing mass (unbraked) (kg)	750	750	750	750	750



Ford PROTECT

Service intervals	15 000km	15 000km	15 000km	15 000km	15 000km
Service Plan	6-yr/90 000km	6-yr/90 000km	6-yr/90 000km	6-yr/90 000km	6-yr/90 000km
Roadside Assistance	3-yr/unlimited km	3-yr/unlimited km	3-yr/unlimited km	3-yr/unlimited km	3-yr/unlimited km
Comprehensive Warranty	4-yr/120 000 km	4-yr/120 000 km	4-yr/120 000 km	4-yr/120 000 km	4-yr/120 000 km
Corrosion Warranty	5-yr/unlimited km	5-yr/unlimited km	5-yr/unlimited km	5-yr/unlimited km	5-yr/unlimited km

*Fuel economy and emission figures obtained from controlled tests on a combined cycle. Note that the actual fuel consumption and emission will depend on many factors including your driving habits, prevailing conditions and your vehicles equipment, condition and use.

*Leather is a combination of leather and high-quality, durable materials.

Ford reserves the right, subject to all applicable laws, to discontinue or change features and other specification either temporarily or permanently without incurring any liability to any prospective purchaser or purchasers.

Consult the vehicle handbook, www.ford.co.za or your nearest Ford Dealer for more information regarding Ford **PROTECT** plans and products. Printed December 2019.



TOURNEO CUSTOM

	2.2 Ambiente LWB LP	2.2 Trend LWB MP	2.2 Ltd SWB HP
Engine			
Type	Duratorq TDCi 2.2	Duratorq TDCi 2.2	Duratorq TDCi 2.2
Cylinders	4 in line	4 in line	4 in line
Displacement (cm³)	2 198	2 198	2 198
Power (kW @ rpm)	74 @ 3 500	92 @ 3 500	114 @ 3 500
Torque (Nm @ rpm)	310 @ 1 300	350 @ 1 450	385 @ 1 600
Bore and stroke (mm)	86 x 94.6	86 x 94.6	86 x 94.6
Fuel injection	Common-rail direct fuel injection	Common-rail direct fuel injection	Common-rail direct fuel injection
Fuel requirement	Diesel	Diesel	Diesel
Emission level	Euro Stage IV	Euro Stage IV	Euro Stage IV
Transmission			
Type	6-speed manual	6-speed manual	6-speed manual
Performance			
Fuel economy – NEDC L/100km (combined cycle)*	6.5	6.5	6.5
CO ₂ emission – combined (g/km)*	172	172	172
Top speed km/h	157	157	157
Steering			
Type: rack-and-pinion steering with rack-mounted power assisted	Std	Std	Std
Hydraulic Power-Assisted Steering (HPAS)	Std	Std	Std
Turning circle (kerb-to-kerb) (m)	12.2	12.8	11.6
Turning circle (wall-to-wall) (m)	12.8	13.4	12.8
Suspension			
Front suspension: independent MacPherson struts, variable-rate coil springs, stabiliser bar and gas-pressurised shock absorbers	Std	Std	Std
Rear suspension: single leaf springs, gas-pressurised shock absorbers	Std	Std	Std
Torque Vectoring Control (TVC)	Std	Std	Std
Brakes			
Front ventilated discs	288mm x 33mm	308mm x 33mm	288mm x 33mm
Rear solid discs	288mm x 16mm	308mm x 16mm	288mm x 16mm
Anti-lock Braking System (ABS) with Electronic Brakeforce Distribution (EBD)	Std	Std	Std
Wheels and Tyres			
16" Steel – 215/65 R16	Std	-	-
16" Alloy – 215/65 R16	Opt	Std	Std
Spare wheel	Conventional Steel	Conventional Steel	Conventional Steel
Safety and Security			
Driver airbag	Std	Std	Std
Passenger airbag	Std	Std	Std
Curtain airbags	Std	Std	Std
Side airbags	Std	Std	Std
ISOFIX child seat – 3 attachments – centre (second and third row) and driver's side (second row) seat	Std	Std	Std
Electronic Stability Programme (ESP)	Std	Std	Std
Hill Launch Assist (HLA)	Std	Std	Std
Load Adaptive Control	Std	Std	Std
Emergency Brake Assist (EBA)	Std	Std	Std
Emergency brake warning	Std	Std	Std
Rollover Mitigation	Std	Std	Std
Trailer Sway Control (TSC) (activated when towbar fitted at Ford Dealer)	Opt	Opt	Std
Centre high-mounted rear stop lamp	Std	Std	Std
Remote power central double locking	Std	Std	Std
Perimeter anti-theft alarm	Std	Std	Std



TOURNEO CUSTOM

	2.2 Ambiente LWB LP	2.2 Trend LWB MP	2.2 Ltd SWB HP
Interior			
Seats			
Standard front and rear cloth seats	Std	Std	-
Leather [®] – front and rear seats	-	-	Std
Occupant Restraints			
Front and rear 3-point seatbelts with pre-tensioners and load limiter	Std	Std	Std
Beltminder – driver and passenger seats	Std	Std	Std
Interior Floor			
Complete floor cover – rubber-insulated, easy-clean	Std	-	-
Complete floor cover – carpet	-	Std	Std
Interior Roof			
Driver and passenger sun visor with illuminated vanity mirror	Std	Std	Std
Front driver and passenger folding grab handles	Std	Std	Std
Overhead console	Std	Std	Std
Driver sunglass holder	Std	Std	Std
Rear coat hooks	Std	Std	Std
Window blinds – rear sides	-	-	Std
Stowage			
Storage compartment – driver's side on fascia top with lift-up lid	Std	Std	Std
Bottle holder – twin 2-litre bottle capacity, fascia-mounted	Std	Std	Std
DIN 75410 compliant tie-down loops	4	4	2
Locking glovebox	-	Std	Std
Environmental Control			
Manual airconditioning – front, filter-air pollen purifier	Std	Std	Std
Heater – recirculation	Std	Std	Std
Airconditioning – rear	Std	Std	Std
Gearshift			
Leather gearknob [®]	-	Std	Std
Polyurethane (PU) gearknob	Std	-	-
Steering Wheel			
Steering wheel – 4-spoke, polyurethane	-	-	-
Steering wheel – 4-spoke, leather [®]	Std	Std	Std
Instruments and Controls			
Trip computer (distance to empty, instantaneous and average fuel consumption, average speed, outside temperature)	Std	Std	Std
12V power point – located on instrument panel and in rear	Std	Std	Std
In-Car Entertainment (ICE)			
Radio; 6 speakers; steering-wheel-mounted audio controls; USB connector; Aux input; Bluetooth [®]	Std	Std	Std
Cruise Control			
Cruise control	Std	Std	Std
Adjustable speed limiter device (ASLD)	Std	Std	Std
Rear-view Mirror			
Standard rear-view mirror	Std	-	-
Electrochromatic rear-view mirror with camera display	-	Std	Std
Rear-view camera (appears in rear-view mirror)	-	Std	Std
Exterior			
Doors – dual side sliding glazed doors and steps with running-boards	Std	Std	Std
Doors – glazed rear tailgate with wash/wipe	Std	Std	Std
Doors handles and liftgate door handle – self colour (black)	Std	-	-
Doors handles and liftgate door handle – body colour	-	Std	Std
Front mudflaps	Std	Std	Std
Trailer hitch assist with towbar	Opt	Opt	Std
Automated headlamps – halogen reflector lights (quad beam)	Std	Std	Std
Power windows with driver's one-touch down	Std	Std	Std
Windows – front, electronically-operated (driver's side – one-shot up/down)	Std	Std	Std
Windows – second row, passenger's side and driver's side flip open	Std	Std	Std
Windows – third row, passenger's side and driver's side fixed	Std	Std	Std
Manual headlamp levelling	Std	Std	Std
Headlamps – daytime running lamps	Std	Std	Std
Front fog lamps	Std	Std	Std
Parking distance sensors – front and rear	Std	Std	Std

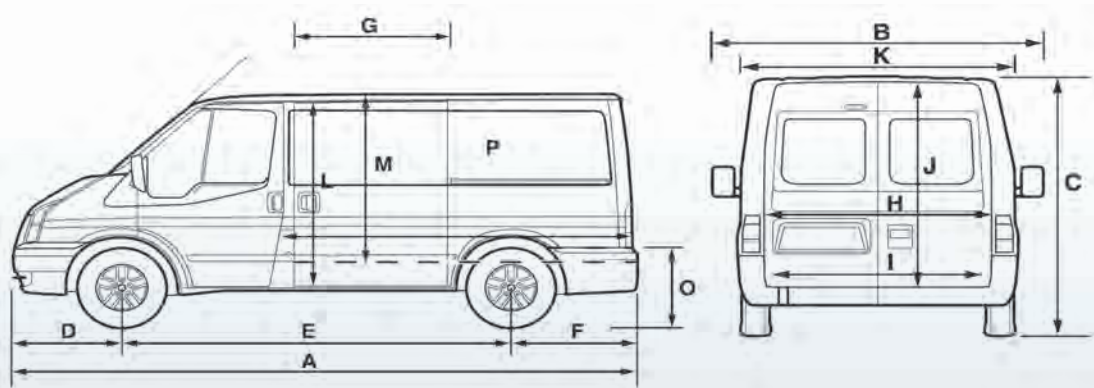


TOURNEO CUSTOM

	2.2 Ambiente LWB LP	2.2 Trend LWB MP	2.2 Ltd SWB HP
Dimensions (mm) – Exterior			
Overall length – A	5 339	5 339	4 972
Overall width with mirrors – B	2 290	2 290	2 290
Overall width with folded back mirrors	2 080	2 080	2 080
Overall width without mirrors – K	1 986	1 986	1 986
Overall height (height dimensions show the range from minimum to maximum of a fully laden vehicle to unladen vehicle) – C	1 909 – 2 022	1 909 – 2 022	1 900 – 2 020
Wheelbase – E	3 300	3 300	2 933
Front of vehicle to front wheel centre – D	1 011	1 011	1 011
Rear of vehicle to rear wheel centre – F	1 028	1 028	1 028
Side door entry width – G	1 030	1 030	1 030
Side load door entry height – L	1 320	1 320	1 320
Rear tailgate entry width – H	1 400	1 400	1 400
Rear tailgate entry height – J	1 340	1 340	1 340
Front track	1 730	1 730	1 730
Rear track	1 710	1 710	1 710
Ground clearance at centre	227 – 273	227 – 273	231 – 277
Ground clearance at front axle	159 – 176	159 – 176	160 – 175
Ground clearance at rear axle	119 – 137	119 – 137	118 – 137

Dimensions (mm) – Interior			
Luggage space between wheel arches – I	1 390	1 390	1 390
Load floor to roof – M	1 406	1 406	1 406
Loading height (height dimensions show the range from minimum to maximum of a fully laden vehicle to unladen vehicle) – O	457 – 589	457 – 589	450 – 583

Dimensions – Other			
Gross vehicle mass (kg)	3 000	3 000	3 000
Gross combined mass (kg)	4 400	4 600	4 600
Fuel tank capacity (L)	80	80	80
Kerb weight (kg)	2 085	2 085	2 061
Gross payload (kg)	915	915	939
Towing mass (braked) (kg)	1 400	1 600	1 600
Towing mass (unbraked) (kg)	750	750	750



Ford PROTECT			
Service intervals	15 000km	15 000km	15 000km
Service Plan	6-yr/90 000km	6-yr/90 000km	6-yr/90 000km
Roadside Assistance	3-yr/unlimited km	3-yr/unlimited km	3-yr/unlimited km
Comprehensive Warranty	4-yr/120 000 km	4-yr/120 000 km	4-yr/120 000 km
Corrosion Warranty	5-yr/unlimited km	5-yr/unlimited km	5-yr/unlimited km

*Fuel economy and emission figures obtained from controlled tests on a combined cycle. Note that the actual fuel consumption and emission will depend on many factors including your driving habits, prevailing conditions and your vehicles equipment, condition and use.

°Leather is a combination of leather and high-quality, durable materials.

Ford reserves the right, subject to all applicable laws, to discontinue or change features and other specification either temporarily or permanently without incurring any liability to any prospective purchaser or purchasers.

Consult the vehicle handbook, www.ford.co.za or your nearest Ford Dealer for more information regarding Ford **PROTECT** plans and products. Printed December 2019.



TRANSIT VAN

	VAN	
	2.2 TDCi (MWB)	2.2L TDCi (ELWB)
Engine		
Type	2.2 Duratorq TDCi	2.2 Duratorq TDCi
Cylinders	Inline 4-cylinders	Inline 4-cylinders
Displacement (cm³)	2198	2198
Power (kW)	92	114
Torque (Nm)	350	385
Fuel requirement	Diesel	Diesel
Diesel particulate filter	Std	Std
Transmission		
Type	6-speed manual	6-speed manual
Final drive	4.71	4.10
Wheels and Tyres		
235/65 R16 – Steel wheel	Std	-
195/75 R16 – Steel wheel – (Dual rear wheel)	-	Std
Styled wheel covers	Std	Std
Spare wheel – Steel wheel	Std	Std
Steering		
Type: rack and pinion with rack-mounted power-assisted	Std	Std
Turning circle (kerb-to-kerb) (m)	11.9	13.3
Performance and Economy		
Fuel economy – combined cycle (NEDC L/100km)**	7.6	9.3
CO ₂ emission – (combined [g/km])**	201	244
Suspension		
Front: Independent MacPherson struts, variable-rate coil springs, stabiliser bar and gas pressurised shock absorbers	Std	Std
Rear suspension: single leaf springs, gas pressurised shock absorbers	Std	Std
Brakes		
Front ventilated discs	Std	Std
Rear solid discs	Std	Std
Emergency brake warning	Std	Std
Anti-lock Bracking System (ABS) with Electronic Brakeforce Distribution (EBD)	Std	Std
Emergency Brake Assist (EBA)	Std	Std
Safety and Security		
Driver airbag	Std	Std
Electronic Stability Programme (ESP)	Std	Std
Hill Launch Assist (HLA)	Std	Std
Traction control	Std	Std
Rollover Mitigation (ROM)	Std	Std
Centre high-mounted rear stop lamp	Std	Std
Power door deadlocks – shielded	Std	Std
Door entry remote – multi-channel – (rechargeable – 1 key fob and 1 plain key)	Std	Std
Rear doors mounted with lock/unlock switch	Std	Std
Drive-away locking with crash unlocking	Std	Std
Door auto-relocking enabled – (45 seconds conditional)	Std	Std
Two-stage unlocking with configurable unlocking config	Std	Std
Perimeter anti-theft alarm	Std	Std
Comfort and Convenience		
Radio with single AM/FM antenna, 2 front speakers, 2 tweeters	Std	Std
USB port, Bluetooth® and Voice Control	Std	Std
Steering-wheel-mounted audio controls	Std	Std
Auxiliary input	Std	Std
Exterior		
180° opening rear doors	Std	-
270° opening rear doors (including magnetic door retainers)	-	Std
Headlamps – projector-style halogen reflector lights (quad-beam)	Std	Std
Manual headlamp levelling	Std	Std
Follow-me-home lighting	Std	Std
Interior and Load Space		
2 x 12V power points	Std	Std
Standard cloth seats	Std	Std
Front driver 3-point seatbelt with pre-tensioners	Std	Std
Front passenger 3-point seatbelts with load limiter	Std	Std
Front power windows with driver one-touch up/down functionality	Std	Std
Partial floor cover – rubber insulated easy-clean (or similar)	Std	Std
Load space lighting	Std	Std
Load compartment floor tie-down hooks	10	12

**The declared fuel consumption and CO₂ emissions figures were achieved during technical laboratory testing in accordance with the legislated technical specifications (SANS 20101: 2006/ECE R101: 2005 as last amended) and validated and approved by the UK Vehicle Certification Authority (VCA). Fuel consumption and CO₂ emissions figures are used to compare different vehicle types under uniform conditions, and are not necessarily indicative of real-life driving conditions. Note that the actual fuel consumption and emissions levels will depend on many factors and are directly affected by the length of the journey; number of passengers and the amount of luggage carried; individual driving style; road conditions; weather conditions; vehicle age, mileage, condition and standard of maintenance; use of vehicle features such as air conditioning; and any modifications to the vehicle. Your fuel economy will vary based on these and other factors and, for these reasons, many drivers may not achieve the EU fuel economy figures in day-to-day driving, although the vehicle is technically capable of doing so.



TRANSIT VAN

	VAN	
	2.2L TDCi (MWB)	2.2L TDCi (ELWB)
Dimensions – Exterior		
Overall length (mm)	5 530	6 704
Overall width – with mirrors (mm)	2 474	2 474
Wheel base (mm)	3 300	3 750
Sliding door width (mm)	1 300	1 300
Sliding door aperture height (mm)	1 700	1 600
Rear door width (mm)	1 565	1 565
Rear door aperture height (mm)	1 748	1 887
Front track (mm)	1 732	1 740
Rear track (SRW) (mm)	1 743	-
Rear track (DRW) (mm)	-	1 670
Dimensions – Interior		
Max load length @ floor (no Bulkhead) (mm)	3 200	4 373
Max load length @ floor (with Bulkhead) (mm)	3 044	4 217
Max load length @ 1.2m high (with Bulkhead) (mm)	2 900	4 073
Max load width (mm)	1 784	1 784
Load space between wheel arches (mm)	1 390	1 154
Load floor to roof (mm)	1 886	2 025
Loadspace (max load) (m³)	10	15.1
Loadspace (SAE method) (m³)	9.1	13.5
Loadspace (VDA method) (m³)	9.1	14.1
Dimensions – Other		
Gross Vehicle Mass (GVM) (kg)	3 300	4 700
Gross Combined Mass (GCM) (kg)	5 325	7 000
Fuel tank capacity (L)	80	80
Kerb weight (kg)	1 900	2 355
Gross payload (kg)	1 325	2 270
Towing mass (braked) (kg)	2 800	3 500
Towing mass (unbraked) (kg)	750	750
Ford PROTECT		
Service intervals	15 000km	15 000km
Service Plan	4-yr/60 000km	4-yr/60 000km
Roadside Assistance	3-yr/unlimited km	3-yr/unlimited km
Comprehensive Warranty	4-yr/120 000km	4-yr/120 000km
Corrosion Warranty	5-yr/unlimited km	5-yr/unlimited km
Options Available at Extra Cost		
Trailer tow attachments (including trailer sway control and trailer brake controller)	Opt	Opt
Comfort Pack (front manual airconditioner and passenger airbag)	Opt	Opt
Rear-view camera with front and rear parking distance sensors	Opt	Opt

Every **TRANSIT PANEL VAN** comes standard with a 4-yr/60 000km Service Plan, which covers all scheduled servicing except friction materials, i.e. brake pads and wiper blades.

Ford may, subject to all applicable laws, discontinue or change features and other specifications either temporarily or permanently, which changes will be communicated to the Ford Dealer Network.

Consult the vehicle handbook, www.ford.co.za or your nearest Ford Dealer for more information regarding Ford **PROTECT** plans and products. Printed December 2019.



TRANSIT CHASSIS CAB

	CHASSIS CAB	
	2.2L TDCi (MWB)	2.2L TDCi (ELWB)
Engine		
Type	2.2 Duratorq TDCi	2.2 Duratorq TDCi
Cylinders	Inline 4-cylinders	Inline 4-cylinders
Displacement (cm³)	2 198	2 198
Power (kW)	92	114
Torque (Nm)	350	385
Fuel requirement	Diesel	Diesel
Diesel particulate filter	Std	Std
Transmission		
Type	6-speed manual	6-speed manual
Final drive	4.71	4.10
Wheels and Tyres		
235/65 R16C – Steel wheel	Std	-
195/75 R16C – Steel wheel – dual rear wheel	-	Std
Styled wheel covers	-	Std
Spare wheel – Steel wheel	Std	Std
Steering		
Type: rack and pinion with rack-mounted power-assisted	Std	Std
Turning circle (kerb-to-kerb) (m)	12.5	13.3
Performance		
Fuel economy – combined cycle (NEDC L/100km)**	7.6	9.3
CO ₂ emission – (combined [g/km])**	201	244
Suspension		
Front: Independent MacPherson struts, variable-rate coil springs, stabiliser bar and gas pressurised shock absorbers	Std	Std
Rear suspension: single leaf springs, gas pressurised shock absorbers	Std	Std
Brakes		
Front ventilated discs	Std	Std
Rear solid discs	Std	Std
Emergency brake warning	Std	Std
Anti-lock Braking System with Electronic Brakeforce Distribution	Std	Std
Emergency Brake Assist (EBA)	Std	Std
Safety and Security		
Driver airbag	Std	Std
Electronic Stability Programme (ESP)	Std	Std
Hill Launch Assist (HLA)	Std	Std
Traction control	Std	Std
Rollover Mitigation (ROM)	Std	Std
Power door deadlocks – shielded	Std	Std
Door entry remote – multi-channel – (rechargeable – 1 key fob and plain key)	Std	Std
Drive-away locking with crash unlocking	Std	Std
Door auto-relocking enabled – ~ 45 seconds conditional	Std	Std
Perimeter anti-theft alarm	Std	Std
Comfort and Convenience		
Radio with single AM/FM antenna, 2 front speakers, 2 tweeters	Std	Std
USB port, Bluetooth® and Voice Control	Std	Std
Steering-wheel-mounted audio controls	Std	Std
Auxiliary input	Std	Std
Interior		
2 x 12V power points	Std	Std
Partial floor cover – rubber insulated easy-clean (or similar)	Std	Std
Exterior		
Side marker lamps	Std	Std
Door handles – self colour	Std	Std
Front bumper – partial body colour	Std	Std
Rear bumper underrun bar	Std	Std
Grille – self colour	Std	Std
Rear mudflaps	Std	Std
Wipers – front, variable/intermittent with electric wash	Std	Std
Orange turn indicators	-	Std
Clear turn indicators	Std	-
Roof mounted light	-	Std
Headlamps – projector-style halogen reflector lights (quad-beam)	Std	Std
Manual headlamp levelling	Std	Std
Follow-me-home lighting	Std	Std

**The declared fuel consumption and CO₂ emissions figures were achieved during technical laboratory testing in accordance with the legislated technical specifications (SANS 20101; 2006/ECE R101; 2005 as last amended) and validated and approved by the UK Vehicle Certification Authority (VCA). Fuel consumption and CO₂ emissions figures are used to compare different vehicle types under uniform conditions, and are not necessarily indicative of real-life driving conditions. Note that the actual fuel consumption and emissions levels will depend on many factors and are directly affected by the length of the journey; number of passengers and the amount of luggage carried; individual driving style; road conditions; weather conditions; vehicle age, mileage, condition and standard of maintenance; use of vehicle features such as air conditioning; and any modifications to the vehicle. Your fuel economy will vary based on these and other factors and, for these reasons, many drivers may not achieve the EU fuel economy figures in day-to-day driving, although the vehicle is technically capable of doing so.



TRANSIT CHASSIS CAB

	CHASSIS CAB	
	2.2L TDCi (MWB)	2.2L TDCi (ELWB)
Dimensions (mm) – Exterior		
Overall length (without float) (mm)	5 572	6 579
Overall length (with float) (mm)	5 767	6 797
Overall width (without float) DRW with mirrors (mm)	2 474	2 474
Wheelbase (mm)	3 504	3 954
Front track (mm)	1 732	1 740
Rear track (SRW) (mm)	1 743	-
Rear track (DRW) (mm)	-	1 670
Dimensions – Other		
Gross Vehicle Mass (GVM) (kg)	3 300	4 700
Gross Combined Mass (GCM) (kg)	5 000	7 000
Fuel tank capacity (L)	80	80
Kerb weight (kg)	1 628	1 934
Gross payload without float (kg)	1 597	2 691
Towing mass (braked) (kg)	2 800	3 500
Towing mass (unbraked) (kg)	750	750
Ford PROTECT		
Service intervals	15 000km	15 000km
Service Plan	4-yr/60 000km	4-yr/60 000km
Roadside Assistance	3-yr/unlimited km	3-yr/unlimited km
Comprehensive Warranty	4-yr/120 000km	4-yr/120 000km
Corrosion Warranty	5-yr/unlimited km	5-yr/unlimited km
Options Available At Extra Cost		
Standard aluminium wide float	Opt	Opt
Comfort Pack (front manual airconditioner and passenger airbag)	Opt	Opt

Every **TRANSIT CHASSIS CAB** comes standard with a 4-yr/60 000km Service Plan, which covers all scheduled servicing except friction materials, i.e. brake pads and wiper blades.

Ford may, subject to all applicable laws, discontinue or change features and other specifications either temporarily or permanently, which changes will be communicated to the Ford Dealer Network.

Consult the vehicle handbook, www.ford.co.za or your nearest Ford Dealer for more information regarding Ford **PROTECT** plans and products. Printed December 2019.

