

NEW FOCUS



www.ford.co.za



Go Further

Introducing the new FOCUS. Smarter inside and out.

Representing the next level of Ford Kinetic Design with a sleek exterior, new elegant grille and state-of-the-art technology, the new **FOCUS** always makes its presence felt. It's a vehicle that ignites the imagination through its flawless design, performance and ability.



Model shown is a **FOCUS** Trend Hatch in Frozen White with the optional Styling Pack.

Hatch or Sedan, the experience is the same.

Get ready for the most addictive driving experience. Agile, powerful and precise, the new **FOCUS** will give you an all-round driving experience you'll never forget.



Model shown is a **FOCUS** Trend Sedan in Lunar Sky.

Start a relationship.

The dynamic personality of the new **FOCUS** continues inside. Sit and appreciate the enhanced instrument panel and new-design steering wheel. The driver-orientated cockpit wraps around, so you'll feel completely at one with the car, technology and features at your fingertips.



Driver Assistance Pack interior shown. International model shown, local specification and features will vary.

Smart like no other.

New technology, such as a parking system that gets you in and out of tight spaces, ensures that the most technologically advanced car in its class stays that way.



New interface,
New features
and new easy-
to-use-design.



The new SYNC³ infotainment system gives you control of everything from audio features to satellite navigation (where fitted), and will even manage phone calls and text messaging – all through simple voice commands. The intuitive 8" colour touchscreen display, with pinch and swipe functionalities, lets you configure your home screen just how you want it, while Apple CarPlay² and Android Auto³, allow you to bring your compatible smartphone functionality into your car.

1. SYNC³ with navigation is available as part of the Trend Driver Assistance Pack. 2. Apple CarPlay is a trademark of Apple Inc. Apple CarPlay requires phone with compatible version of Apple iOS, active data service, and connection cable (sold separately). 3. Full feature functionality not released for South Africa.



Sensors can warn you of
a potential collision
and automatically
apply the brakes.



Active Park Assist helps you find a space

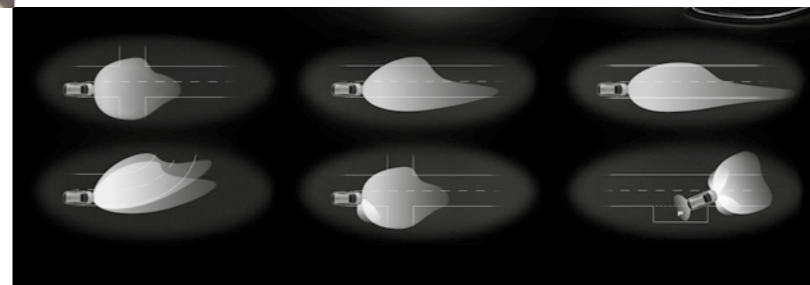
Active Park Assist* can steer you into parallel or perpendicular parking spaces just 20% longer or wider than the car. Simply push a button, and the sensor of the innovative system locates a suitable space as you drive past. Then it automatically steers you in, while all you do is operate the accelerator, brake and gears (following on-screen instructions and audible signals).

Park-Out Assist* works like Active Park Assist in reverse, helping you manoeuvre out of a parallel space. The system steers while you keep control of the accelerator, brake and gears. When the system has cleared the space, it gives you a 'Take control of steering' message through the cluster.

*Available as part of Trend Driver Assistance Pack.



Get in. And get out.



Adaptive Bi-xenon headlamps* to help you see more

The new FOCUS Bi-xenon headlamps have been designed to be as functional as they are beautiful. This intelligent headlamp system detects different road conditions and selects the appropriate beam pattern for enhanced illumination. And to help you see more in tight bends, the static cornering headlamp feature illuminates the inside of a corner when you turn the steering wheel into the direction of turn.

*Available as part of Trend Styling Pack.



Rear-view camera*

Select reverse gear, and the rear-view camera comes on automatically in the navigation display, allowing you to see objects behind your car. Special guidance graphics indicate the width and centre line of the car, based on the steering angle, for safer and easier manoeuvring.

*Available as part of Trend Driver Assistance Pack.



Lane Departure Warning*

Lane Departure Warning is designed to recognise when you approach the road markings without using the indicator, and alerts you with vibrations through the steering wheel. Lane Departure Warning is designed to apply steering torque back towards the lane you were in to help you recognise that corrective action is required. Operates at speeds over 65km/h on multi-lane roads with clearly visible lane markings.

*Available as part of Trend Driver Assistance Pack.



Driver Alert*

Designed to inform you if the system detects driving behaviour that indicates a drop in alertness levels. Initially, a warning icon is displayed in the instrument cluster, asking you to take a rest. If driving alertness further declines, the message is repeated and combined with a chime.

*Available as part of Trend Driver Assistance Pack.

Active City Stop*

Active City Stop is used to monitor the road ahead. If the system detects a potential collision, the brakes are applied automatically to help avoid or minimise an impact.

Active City Stop may help avoid or minimise the impact of a collision between speeds of 3.6 and 30km/h. It is not a substitute for driver alertness. Function may not operate in some driving and road conditions, or adverse weather.

*Available as part of Trend Driver Assistance Pack.

EcoBoost. The story of LESS FUEL, MORE POWER.

With the turbocharger, direct injection, and diamond-like coating on the piston ring, the Ford EcoBoost engine produces the same performance as a larger engine, but with superior fuel economy and lower emissions.



EcoBoost =
more power +
better fuel economy

As well as generating more power compared to conventional engines, EcoBoost power units improve fuel efficiency and CO₂ emissions by as much as 20%.

The new FOCUS gives you a choice of four engine sizes:

- The 1.0l EcoBoost – six-times winner of international Engine of the Year.
- The 1.5l EcoBoost – all the power and performance of the 2.0l it replaces, but with even lower emissions and better fuel economy.
- The 1.5l Duratec TDCi – outstanding torque with exceptional fuel economy.
- The 2.0l EcoBoost – ultimate power, available in the exciting FOCUS ST.

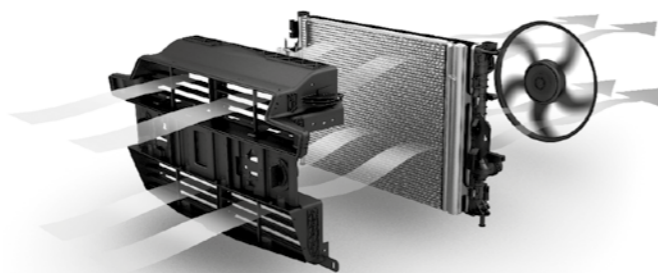
Engine of the year

Ford's 1.0l EcoBoost engine has received nine International Engine of the Year awards in six years. This groundbreaking engine defines drivability, performance, economy, refinement and technology for its class.



Active Grille Shutter

Mounted in the grille aperture ahead of the radiator, Ford's Active Grille Shutter features motorised horizontal vents that can rotate through 90 degrees to block the air flow and, when fully closed, can reduce aerodynamic drag by up to 6%.



Quickclear heated windscreen

Push a button, and a heated element built into the windscreen clears the glass in seconds. It will also defrost an icy windscreen, reducing the need for ice scrapers.

Control Blade independent rear suspension

The FOCUS offers you an addictive driving experience. A key element is the control-blade independent rear suspension that absorbs both horizontal and vertical rear-wheel steering for increased cornering stability.



Auto wipers and headlamps*

Windscreen wipers are activated automatically when it begins to rain, whilst headlamps automatically illuminates in poor conditions.

*Standard on ST3 and available as part of Trend Driver Assistance Pack.



Easy Fuel capless refuelling system

Using Ford's Easy Fuel system, it's hard to fill up with the wrong fuel. Why? Because the correct fuel nozzle for your car is the only one that will fit. Another great thing about this system is that it's structured in a way that prevents unauthorised access to or theft of fuel.



Auto-Stop/Start

When your FOCUS is idling at a standstill, auto stop/start automatically shuts down the engine to save fuel.

When you want to drive off, the engine immediately restarts.



Ford MyKey®

Ford-exclusive MyKey® technology enables owners to programme a key – usually for younger drivers – that restricts the top speed of the FOCUS, reduces the maximum volume of audio system, and even disables the audio system altogether if the driver and passengers are not using seatbelts. It can also prevent the driver from deactivating safety technologies such as the Electronic Stability Programme (ESP), which can help mitigate or prevent collisions.



Relentless testing

During its development, we test-drove the FOCUS the equivalent of 87 times around the globe. It's a car you can rely on, right down to the smallest ball bearing.

Intelligent Protection System (IPS)

Awarded the NCAP 5-star rating, the FOCUS's advanced Intelligent Protection System (IPS) uses a range of sophisticated technologies that are designed to help keep you protected, including an ultrahigh-strength steel safety cage, an Anti-lock Braking System (ABS) with Electronic Brakeforce Distribution (EBD), as well as front and curtain airbags.



Safe

Included in the IPS:

- Driver and front-passenger airbags
- Driver and front-passenger side-impact airbags
- Side-curtain airbags for front and rear seats
- Collapsible steering column and pedals for optimised protection of driver's legs and feet
- Robust, computer-optimised body structure with ultra-rigid safety cell and crumple zones
- Pre-tensioners, load-limiting retractors and height-adjustable mounts on front seatbelts
- Anti-submarining seat bases
- Anti-lock Braking System (ABS) with Electronic Brakeforce Distribution (EBD), Emergency Brake Assist (EBA) and Electronic Stability Programme (ESP)
- Emergency brake warning
- I-size with ISOFIX compatible with outer rear seats



FOCUS ST

Everything about the **FOCUS ST** is engineered to excite. From the powerful engine to the sleek muscular design, it's 100% car, 0% apology.



ST3 model shown. Tangerine Scream* paint option available on ST1 and ST3 models. *Metallic body colour is optional at extra cost.



Ford's new EcoBoost technology offers up to 20% better fuel economy and up to 15% less CO₂, without sacrificing power and maintaining the quality of Ford vehicles you've come to expect.

The 2.0l EcoBoost engine in the **FOCUS ST** provides exceptional performance, with an exhilarating 184kW of power and 360Nm of torque in a high-performance sports package, while still achieving an amazing 6.8l/100km.*

Using three proven engine technologies in harmony, namely advanced turbocharging, direct fuel injection and Twin Independent Variable Cam Timing, it sets a new standard in fuel efficiency with reduced carbon emissions, outstanding performance and affordability.

*Figures obtained from controlled tests using ADR 81/02 (combined). Actual fuel consumption and emissions will depend on many factors, including driving habits, prevailing conditions as well as your vehicle's equipment, condition and use.



Racing seats

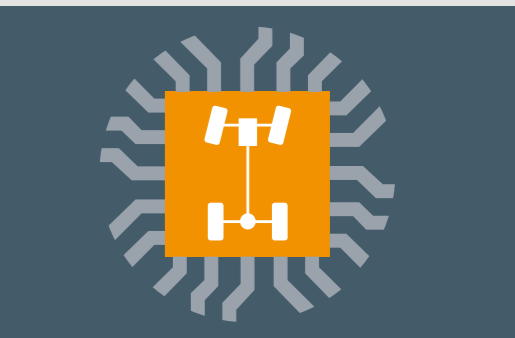
With excellent shoulder and torso support, the world-famous RECARO® seats are ergonomically designed for the high-performance driver.

SYNC®3 with Touchscreen, Bluetooth® and Voice Control*

Standard with two USB ports and an easy-to-navigate 8" touchscreen. SYNC® lets you use Voice Control for your phone and music.

Conquer corners

With the new Electronic Transitional Stability (ETS) function, the new **FOCUS ST** has improved precision and control during rapid changes of direction at speed, ensuring every driver input is registered whilst remaining perfectly balanced.



Sizzling hot design

Turn heads wherever you go in your stylish **FOCUS ST**. Think integrated roof spoiler, no-nonsense dual-pipe exhaust, and bold trapezoidal grille with blood-red ST badging.



FOCUS ST COLOURS



Deep Impact Blue (Metallic*)



Frozen White (Solid)



Race Red (Solid)



Shadow Black (Metallic*)



Moondust Silver (Metallic*)



Stealth (Solid)

*Metallic body colours are optional at extra cost.

FOCUS ST WHEELS



18" Alloy wheels 235/40 R18



19" Alloy wheels 235/35 R19 Only available on ST3

Note: The images used are to illustrate body colours only and may not reflect the vehicle described. Colours and trims reproduced within this brochure may vary from the actual colours, due to the limitations of the printing processes used.

Make it yours.

Choosing the colour and trim for your **FOCUS** is an opportunity to personalise your selection. |



Blazer Blue
(Solid)



Candy Red^o
(Metallic*)



Deep Impact Blue
(Metallic*)



Frozen White
(Solid)



Lunar Sky
(Metallic*)



Iceberg
(Metallic*)



Magnetic
(Metallic*)



Moondust Silver
(Metallic*)



Shadow Black
(Metallic*)



Race Red
(Solid)



Tectonic Silver
(Metallic*)



Caribou
(Metallic*)

^oCandy Red is only available on Trend models.
*Metallic body colours are options at extra cost.

Note: The images used are to illustrate body colours only and may not reflect the vehicle described. Colours and trims reproduced within this brochure may vary from the actual colours, due to the limitations of the printing processes used.

Wheels

A range of distinctive wheels, purpose-designed to complement **FOCUS** dynamic lines.



16" Steel wheels 205/55 R16
Standard on Ambiente



16" Alloy wheels 205/55 R16
Option on Ambiente



16" Alloy wheels 205/55 R16
Standard on Trend



17" Alloy wheels 215/50 R17
Available as part of Trend Styling Pack – 5-door only



FORD CREDIT

As part of the Ford family, Ford **CREDIT** can offer a number of unique finance options to make owning a new or used vehicle affordable and simple. For more information regarding Ford **CREDIT**, speak to your Ford Dealer or go to www.ford.co.za/buying/ford-credit/home.



FORD PROTECT

Genuine parts. Genuine service.

Enjoy years of trouble-free motoring and preserve the value of your new Ford by fitting only genuine Ford parts and accessories. Servicing your new Ford at a Ford Dealer will also protect you and your vehicle warranty.



Business and Commercial Fleet Customers.

The Ford portfolio of products is growing rapidly to meet your business needs.

Please contact your local Ford Dealer for more information
or visit our website www.ford.co.za/fleet
or alternatively email us at fleetsa@ford.com.

Ford PROTECT

Ford **PROTECT** offers a holistic suite of service, maintenance, warranty and roadside-assistance products aimed at keeping your new **FOCUS** and **FOCUS ST** in perfect working condition.

New Vehicle Warranty – Every new **FOCUS** and **FOCUS ST** comes with a 4-yr/120 000km Comprehensive Warranty.

Service Plan – Every new **FOCUS** comes standard with a 4-yr/80 000km Service Plan, and a 5-yr/90 000km Service Plan on all **FOCUS ST** derivatives which covers all scheduled servicing except friction materials, i.e. brake pads and wiper blades.

Corrosion Warranty – 5-yr/unlimited km cover.

Roadside Assistance – 3-yr/unlimited km cover for mechanical, electrical, flat tyres, batteries, medical emergencies and towing, if needed, to the nearest Ford dealership.

New Vehicle Extended Warranty – An Extended Warranty may be purchased prior to the expiry of the 4-yr/120 000km New Vehicle Warranty, giving owners an extra 2-yr/80 000km of worry-free driving.

Consult the vehicle handbook, a Ford Dealer or www.ford.co.za for more information regarding Ford **PROTECT** plans.

**The declared fuel consumption and CO₂ emissions figures were achieved during technical laboratory testing in accordance with the legislated technical specifications (SANS 20101: 2006/ECE R101: 2005 as last amended) and validated and approved by the UK Vehicle Certification Authority (VCA). Fuel consumption and CO₂ emissions figures are used to compare different vehicle types under uniform conditions, and are not necessarily indicative of real-life driving conditions. Note that the actual fuel consumption and emissions levels will depend on many factors and are directly affected by the length of the journey; number of passengers and the amount of luggage carried; individual driving style; road conditions; weather conditions; vehicle age, mileage, condition and standard of maintenance; use of vehicle features such as air conditioning; and any modifications to the vehicle. Your fuel economy will vary based on these and other factors and, for these reasons, many drivers may not achieve the EU fuel economy figures in day-to-day driving, although the vehicle is technically capable of doing so.



Quality

We design and build your Ford to feel as good after many years of service as it did the day you picked it up. And to drive just as beautifully too.



Green

Using advanced Ford technology, we're committed to creating vehicles with improved fuel economy, reduced CO₂ emissions and a lower overall cost of ownership.



Safe

Ford's Intelligent Protection System uses sophisticated technology designed to help prevent an accident and, if one should happen, to protect you.



Smart

Vehicles with smart intuitive technologies designed to connect your world, and many clever solutions from Ford that make life a little easier.

Ford reserves the right, subject to all applicable laws, to discontinue or change features and other specifications either temporarily or permanently, which will be communicated to the Ford Dealer Network. Printed March 2018. The Trend Driver Assistance Pack and Trend Styling Pack has added features from MY2017.5. Contact your Dealer for more information, as certain **FOCUS** Trend derivatives still has Trend derivatives with the none updated pack content.



Visit FordSouthAfrica



FLOOR MAT

FM5JA130D00FA3JA6

SUIT UP

WITH FORD **FOCUS** ACCESSORIES



KIT

CM5J1K007HB
A66SX5K417BCA

AMAM5J3K660AA
EV6T1A180DC



HEADLAMP PROTECTOR

FSA151390ECF



MUDFLAPS

AMBM5JA286A12AB
AMBM5JF286A12AA



AIR DEFLECTOR

A66SX201K56BJA
A66SX201K56BKA

A66SX201K56BMA
A66SX201K56BNA



BUMPER PROTECTOR

AMBM5J17E960AA
AMBM5J17E960BA



DOOR SCUFF

AMBM5JX132A18AA



THULE CARGO BOX

TB631250



TOWBAR

TOWBAR – FIXED, 5-DOOR: AMBM5J19D520AA
TOWBAR – FIXED, 4-DOOR: AMBM5J19D520BA
TOWBAR – DETACHABLE, 5-DOOR:
AMBM5J19D520GA
TOWBAR – DETACHABLE, 4-DOOR:
AMBM5J19D520HA
**ELECTRICAL KIT FOR FIXED AND DETACHABLE
TOWBAR 13-PIN CONNECTOR, RHD, 5-DOOR:**
AMBM5JA15A416AC
**ELECTRICAL KIT FOR FIXED AND DETACHABLE
TOWBAR 13-PIN CONNECTOR, 4-DOOR:**
AMBM5JF15A416AC
**ADAPTER WIRING FOR FIXED AND
DETACHABLE TOWBAR E-KIT FOR ELECTRICAL
KIT (FOR LOW-SPEC VEHICLES):**
AMBM5J19H465AB
TRAILER REAR MODULE: AM5J19H378AD



Go Further

	Sedan							
	1.0 EcoBoost Ambiente	1.0 EcoBoost Ambiente Auto	1.5 TDCi Ambiente	1.0 EcoBoost Trend	1.0 EcoBoost Trend Auto	1.5 EcoBoost Trend	1.5 EcoBoost Trend Auto	1.5 TDCi Trend
Engine								
Engine type	1.0l EcoBoost inline three-cylinder turbocharged	1.0l EcoBoost inline three-cylinder turbocharged	1.5l TDCi inline four-cylinder diesel, transverse	1.0l EcoBoost inline three-cylinder turbocharged	1.0l EcoBoost inline three-cylinder turbocharged	1.5l EcoBoost inline four-cylinder turbocharged	1.5l EcoBoost inline four-cylinder turbocharged	1.5l TDCi inline four-cylinder diesel, transverse
Engine capacity (cc)	998	998	1499	998	998	1499	1499	1499
Compression ratio	10.0:1	10.0:2	16.0:1	10.0:1	10.0:1	10.0:1	10.0:1	16.0:1
Bore & stroke (mm)	71.9 / 82.0	71.9 / 82.0	75.0 / 88.3	71.9 / 82.0	71.9 / 82.0	79.0 / 81.4	79.0 / 81.4	75.0 / 88.3
Max power (kW @ rpm)	92 @ 6000	92 @ 6000	88 @ 3600	92 @ 6000	92 @ 6000	132 @ 6000	132 @ 6000	88 @ 3600
Max torque (Nm @ rpm)	170 @ 1400-4500	170 @ 1400-4500	270 @ 1750-2500	170 @ 1400-4500	170 @ 1400-4500	240 @ 1600-5000	240 @ 1600-5000	270 @ 1750-2500
Fuel system	Common-rail direct injection, turbocharger	Common-rail direct injection, turbocharger	Common-rail direct injection, turbocharger	Common-rail direct injection, turbocharger	Common-rail direct injection, turbocharger	Common-rail direct injection, turbocharger	Common-rail direct injection, turbocharger	Common-rail direct injection, turbocharger
Smart Regenerative Charging	Std	Std	Std	Std	Std	Std	Std	Std
Auto-Stop/Start	Std	Std	-	Std	Std	Std	Std	-
Transmission								
Drive wheels	Front-wheel drive	Front-wheel drive	Front-wheel drive	Front-wheel drive	Front-wheel drive	Front-wheel drive	Front-wheel drive	Front-wheel drive
Type	6-speed manual	6-speed PowerShift auto with SelectShift®	6-speed manual	6-speed manual	6-speed PowerShift auto with SelectShift®	6-speed manual	6-speed auto	6-speed manual
Wheels and Tyres								
Wheels & tyres	16" Steel (205/55 R16) Opt. 1 - 16" Alloy (205/55 R16)	16" Steel (205/55 R16) Opt. 1 - 16" Alloy (205/55 R16)	16" Steel (205/55 R16) Opt. 1 - 16" Alloy (205/55 R16)	16" Alloy (205/55 R16)	16" Alloy (205/55 R16)	16" Alloy (205/55 R16)	16" Alloy (205/55 R16)	16" Alloy (205/55 R16)
Spare wheel - mini: T125/90 R16	Std	Std	Std	Std	Std	Std	Std	Std
Tyre pressure monitor	Std	Std	Std	Std	Std	Std	Std	Std
Steering								
Electric Power-Assisted Steering (EPAS) with speed-dependent support	Std	Std	Std	Std	Std	Std	Std	Std
Tilt & telescopic (rake & reach) adjustable steering wheel	Std	Std	Std	Std	Std	Std	Std	Std
Performance and Economy								
Acceleration (0-100km/h) (secs)	11.1	11.1	10.6	11.1	11.1	8.7	9.0	10.6
CO ₂ emissions** (g/km)	110	125	105	110	125	128	140	105
Combined fuel consumption** (l/100km)	5.0	5.5	4.1	5.0	5.5	5.6	6.1	4.1
Suspension								
Front axle: independent MacPherson strut	Std	Std	Std	Std	Std	Std	Std	Std
Rear axle: independent integral link	Std	Std	Std	Std	Std	Std	Std	Std
Brakes								
Front: ventilated disc	Std	Std	Std	Std	Std	Std	Std	Std
Rear: solid disc	Std	Std	Std	Std	Std	Std	Std	Std
Dimensions								
Length (mm)	4534	4534	4534	4534	4534	4534	4534	4534
Width (mm) (excl. mirrors)	1823	1823	1823	1823	1823	1823	1823	1823
Height (mm)	1484	1484	1484	1484	1484	1484	1484	1484
Wheelbase (mm)	2648	2648	2648	2648	2648	2648	2648	2648
Luggage volume (l)	421	421	421	421	421	421	421	421
Fuel tank capacity (l)	55	55	55	55	55	55	55	55
Maximum towing mass (kg)	1200	1200	1200	1200	1200	1500	1500	1200
Exterior								
Front fog lamps	-	-	-	Std	Std	Std	Std	Std
Active grille shutters	Std	Std	Std	Std	Std	Std	Std	Std
Rear heating demister	Std	Std	Std	Std	Std	Std	Std	Std
Heated windscreen	-	-	-	Std	Std	Std	Std	Std
Power-adjustable mirrors with side indicator	Std	Std	Std	Std	Std	Std	Std	Std
Rear fog lamp	Std	Std	Std	Std	Std	Std	Std	Std
Front wipers: rheostat controlled variable interval	Std	Std	Std	Std	Std	Std	Std	Std

**The declared fuel consumption and CO₂ emissions figures were achieved during technical laboratory testing in accordance with the legislated technical specifications (SANS 20101: 2006/ECE R101: 2005 as last amended) and validated and approved by the UK Vehicle Certification Authority (VCA). Fuel consumption and CO₂ emissions figures are used to compare different vehicle types under uniform conditions, and are not necessarily indicative of real-life driving conditions. Note that the actual fuel consumption and emissions levels will depend on many factors and are directly affected by the length of the journey; number of passengers and the amount of luggage carried; individual driving style; road conditions; weather conditions; vehicle age, mileage, condition and standard of maintenance; use of vehicle features such as air conditioning; and any modifications to the vehicle. Your fuel economy will vary based on these and other factors and, for these reasons, many drivers may not achieve the EU fuel economy figures in day-to-day driving, although the vehicle is technically capable of doing so.



Go Further

	Sedan							
	1.0 EcoBoost Ambiente	1.0 EcoBoost Ambiente Auto	1.5 TDCi Ambiente	1.0 EcoBoost Trend	1.0 EcoBoost Trend Auto	1.5 EcoBoost Trend	1.5 EcoBoost Trend Auto	1.5 TDCi Trend
Instruments								
Trip computer, including EcoMode, outside temperature	Std	Std	Std	Std	Std	Std	Std	Std
TFT colour-screen trip computer, including trip timer, fuel used, seatbelt warning & outside temperature	-	-	-	Opt2	Opt2	Opt2	Opt2	-
Comfort and Convenience								
Manual airconditioning	Std	Std	Std	Std	Std	Std	Std	Std
Centre console with adjustable cup holders & 12V	Std	Std	Std	-	-	-	-	-
Centre console with adjustable cup holders, 12V (2) & leather*-trimmed armrest	-	-	-	Std	Std	Std	Std	Std
Cruise control with speed limiter	-	-	-	Std	Std	Std	Std	Std
Easy Fuel capless refuelling system with misfuel inhibitor	Std	Std	Std	Std	Std	Std	Std	Std
In-Car Entertainment (ICE)								
Ford audio with 6 speakers & 4.2" dot-matrix screen	Std	Std	Std	Std	Std	Std	Std	Std
Ford audio with 6 speakers & 4.2" TFT colour screen	-	-	-	Opt2	Opt2	Opt2	Opt2	-
Ford SYNC® with Bluetooth® & Voice Control	Std	Std	Std	Std	Std	Std	Std	Std
Ford SYNC®3 with Touchscreen, Bluetooth®, Voice Control & Navigation	-	-	-	Opt2	Opt2	Opt2	Opt2	-
2 USB ports, Bluetooth® audio & Aux input	Std	Std	Std	Std	Std	Std	Std	Std
Steering-wheel-mounted audio controls	Std	Std	Std	Std	Std	Std	Std	Std
Seating								
6-way manually adjustable front seat (driver)	Std	Std	Std	Std	Std	Std	Std	Std
4-way manually adjustable front seat (passenger)	Std	Std	Std	Std	Std	Std	Std	Std
Front seatback pocket (driver & passenger)	-	-	-	Std	Std	Std	Std	Std
Safety and Security								
Dual front & side airbags	Std	Std	Std	Std	Std	Std	Std	Std
Curtain airbags	-	-	-	Std	Std	Std	Std	Std
Child-proof rear door locks (power)	-	-	-	Std	Std	Std	Std	Std
Ford MyKey®	Std	Std	Std	Std	Std	Std	Std	Std
Drive-away locking	Std	Std	Std	Std	Std	Std	Std	Std
Anti-lock Braking System (ABS) & Electronic Brakeforce Distribution (EBD)	Std	Std	Std	Std	Std	Std	Std	Std
Emergency Brake Assist (EBA)	Std	Std	Std	Std	Std	Std	Std	Std
Electronic Stability Programme (ESP) with Traction Control	Std	Std	Std	Std	Std	Std	Std	Std
Hill Launch Assist (HLA)	Std	Std	Std	Std	Std	Std	Std	Std
Active Park Assist: parking space measurement system with perpendicular & parallel parking	-	-	-	Opt2	Opt2	Opt2	Opt2	-
Rear-view camera with front & rear parking sensors	-	-	-	Opt2	Opt2	Opt2	Opt2	-
Lane Departure Warning with Lane Keeping Aid	-	-	-	Opt2	Opt2	Opt2	Opt2	-
Active City Stop	-	-	-	Opt2	Opt2	Opt2	Opt2	-
Interior mirror: auto dimming	-	-	-	Opt2	Opt2	Opt2	Opt2	-
Immobiliser	Std	Std	Std	Std	Std	Std	Std	Std
Remote central locking	Std	Std	Std	Std	Std	Std	Std	Std
Halogen projector headlights	Std	Std	Std	Std	Std	Std	Std	Std
Follow-me-home headlamps: auto	-	-	-	Opt2	Opt2	Opt2	Opt2	-
Auto headlamps: on/off	-	-	-	Opt2	Opt2	Opt2	Opt2	-
Manual headlamps levelling	Std	Std	Std	Std	Std	Std	Std	Std
Front power windows: one-touch down	Std	Std	Std	-	-	-	-	-
Front & rear power windows: one-touch up/down with global open/close	-	-	-	Std	Std	Std	Std	Std
Front wipers: auto adjustment with rain sensor	-	-	-	Opt2	Opt2	Opt2	Opt2	-
ISOFIX child-seat anchors (outboard seats – 2)	Std	Std	Std	Std	Std	Std	Std	Std
Ford PROTECT								
Service intervals	20 000km	20 000km	20 000km	20 000km	20 000km	20 000km	20 000km	20 000km
Comprehensive Warranty	4-yr/120 000km	4-yr/120 000km	4-yr/120 000km	4-yr/120 000km	4-yr/120 000km	4-yr/120 000km	4-yr/120 000km	4-yr/120 000km
Service Plan	4-yr/80 000km	4-yr/80 000km	4-yr/80 000km	4-yr/80 000km	4-yr/80 000km	4-yr/80 000km	4-yr/80 000km	4-yr/80 000km
Roadside Assistance	3-yr/unlimited km	3-yr/unlimited km	3-yr/unlimited km	3-yr/unlimited km	3-yr/unlimited km	3-yr/unlimited km	3-yr/unlimited km	3-yr/unlimited km
Corrosion Warranty	5-yr/unlimited km	5-yr/unlimited km	5-yr/unlimited km	5-yr/unlimited km	5-yr/unlimited km	5-yr/unlimited km	5-yr/unlimited km	5-yr/unlimited km

Options (opt.) mentioned in specification sheet are available as part of a 'Pack'. Features may not be purchased separately.

Opt1 – Ambiente wheel

Opt2 – Trend Driver Assistance Pack, not available on TDCi engines.

*Leather is a combination of leather and high-quality, durable materials.

The Trend Driver Assistance Pack and Trend Styling Pack has added features from MY2017.5. Contact your local dealer for more information, as certain FOCUS Trend derivatives still has Trend derivatives with the none updated pack content.

Ford reserves the right, subject to all applicable laws, to discontinue or change features and other specifications either temporarily or permanently without incurring any liability to any prospective purchaser or purchasers. Changes will be communicated to the Ford Dealer Network.

Ford PROTECT

Service Plan – Covers all scheduled servicing, except friction materials, i.e. brake pads and wiper blades.

Consult the vehicle handbook, www.ford.co.za or your nearest Ford Dealer for more information regarding Ford PROTECT plans and products. Printed March 2018.



Go Further

	Hatch							
	1.0 EcoBoost Ambiente	1.0 EcoBoost Ambiente Auto	1.5 TDCi Ambiente	1.0 EcoBoost Trend	1.0 EcoBoost Trend Auto	1.5 EcoBoost Trend	1.5 EcoBoost Trend Auto	1.5 TDCi Trend
Engine								
Engine type	1.0l EcoBoost inline three-cylinder turbocharged	1.0l EcoBoost inline three-cylinder turbocharged	1.5l TDCi inline four-cylinder diesel, transverse	1.0l EcoBoost inline three-cylinder turbocharged	1.0l EcoBoost inline three-cylinder turbocharged	1.5l EcoBoost inline four-cylinder turbocharged	1.5l EcoBoost inline four-cylinder turbocharged	1.5l TDCi inline four-cylinder diesel, transverse
Engine capacity (cc)	998	998	1499	998	998	1499	1499	1499
Compression ratio	10.0:1	10.0:1	16.0:1	10.0:1	10.0:1	10.0:1	10.0:1	16.0:1
Bore & stroke (mm)	71.9 / 82.0	71.9 / 82.0	75.0 / 88.3	71.9 / 82.0	71.9 / 82.0	79.0 / 81.4	79.0 / 81.4	75.0 / 88.3
Max power (kW @ rpm)	92 @ 6000	92 @ 6000	88 @ 3600	92 @ 6000	92 @ 6000	132 @ 6000	132 @ 6000	88 @ 3600
Max torque (Nm @ rpm)	170 @ 1400-4500	170 @ 1400-4500	270 @ 1750-2500	170 @ 1400-4500	170 @ 1400-4500	240 @ 1600-5000	240 @ 1600-5000	270 @ 1750-2500
Fuel system	Common-rail direct injection, turbocharger	Common-rail direct injection, turbocharger	Common-rail direct injection, turbocharger	Common-rail direct injection, turbocharger	Common-rail direct injection, turbocharger	Common-rail direct injection, turbocharger	Common-rail direct injection, turbocharger	Common-rail direct injection, turbocharger
Smart Regenerative Charging	Std	Std	Std	Std	Std	Std	Std	Std
Auto-Stop/Start	Std	Std	-	Std	Std	Std	Std	-
Transmission								
Drive wheels	Front-wheel drive	Front-wheel drive	Front-wheel drive	Front-wheel drive	Front-wheel drive	Front-wheel drive	Front-wheel drive	Front-wheel drive
Type	6-speed manual	6-speed PowerShift auto with SelectShift®	6-speed manual	6-speed manual	6-speed PowerShift auto with SelectShift®	6-speed manual	6-speed auto	6-speed manual
Wheels and Tyres								
Wheels & tyres	16" Steel (205/55 R16) Opt. 1 - 16" Alloy (205/55 R16)	16" Steel (205/55 R16) Opt. 1 - 16" Alloy (205/55 R16)	16" Steel (205/55 R16) Opt. 1 - 16" Alloy (205/55 R16)	16" Alloy (205/55 R16) Opt. 3 - 17" Alloy (215/50 R17)	16" Alloy (205/55 R16) Opt. 3 - 17" Alloy (215/50 R17)	16" Alloy (205/55 R16) Opt. 3 - 17" Alloy (215/50 R17)	16" Alloy (205/55 R16) Opt. 3 - 17" Alloy (215/50 R17)	16" Alloy (205/55 R16) Opt. 3 - 17" Alloy (215/50 R17)
Spare wheel - mini: T125/90 R16	Std	Std	Std	Std	Std	Std	Std	Std
Tyre pressure monitor	Std	Std	Std	Std	Std	Std	Std	Std
Steering								
Electric Power-Assisted Steering (EPAS) with speed-dependent support	Std	Std	Std	Std	Std	Std	Std	Std
Tilt & telescopic (rake & reach) adjustable steering wheel	Std	Std	Std	Std	Std	Std	Std	Std
Performance and Economy								
Acceleration (0-100km/h) (secs)	11.1	11.0	10.5	11.1	11.0	8.6	8.9	10.5
CO ₂ Emissions** (g/km)	108	125	105	108	125	127	140	105
Combined fuel consumption** (l/100km)	5.0	5.5	4.1	5.0	5.5	5.5	6.1	4.1
Suspension								
Front axle: independent MacPherson strut	Std	Std	Std	Std	Std	Std	Std	Std
Rear axle: independent integral link	Std	Std	Std	Std	Std	Std	Std	Std
Brakes								
Front: ventilated disc	Std	Std	Std	Std	Std	Std	Std	Std
Rear: solid disc	Std	Std	Std	Std	Std	Std	Std	Std
Dimensions								
Length (mm)	4358	4358	4358	4358	4358	4358	4358	4358
Width (mm) (excl. mirrors)	1823	1823	1823	1823	1823	1823	1823	1823
Height (mm)	1484	1484	1484	1484	1484	1484	1484	1484
Wheelbase (mm)	2648	2648	2648	2648	2648	2648	2648	2648
Luggage volume (l)	316	316	316	316	316	316	316	316
Fuel tank capacity (l)	55	55	55	55	55	55	55	55
Maximum towing mass (kg)	1200	1200	1200	1200	1200	1500	1500	1200
Exterior								
Rear spoiler: body colour	Std	Std	Std	Std	Std	Std	Std	Std
Sports rear spoiler - body styling kit	-	-	-	Opt3	Opt3	Opt3	Opt3	Opt3
Sunroof power tilt and slide	-	-	-	Opt3	Opt3	Opt3	Opt3	Opt3
Front fog lamps	-	-	-	Std	Std	Std	Std	Std
Active grille shutters	Std	Std	Std	Std	Std	Std	Std	Std
Acoustic laminated windscreen	-	-	-	-	-	Std	Std	-
Rear heating demister	Std	Std	Std	Std	Std	Std	Std	Std
Heated windscreen	-	-	-	Std	Std	Std	Std	Std
Power-adjustable mirrors with side indicator	Std	Std	Std	Std	Std	Std	Std	Std
Power-adjustable, heated mirrors with side indicator, auto fold (on locking) with approach light (puddle lights)	-	-	-	Opt3	Opt3	Opt3	Opt3	Opt3
Rear fog lamp	Std	Std	Std	Std	Std	Std	Std	Std
Front wipers: rheostat controlled variable interval	Std	Std	Std	Std	Std	Std	Std	Std
Instruments								
Trip computer, including EcoMode, outside temperature	Std	Std	Std	Std	Std	Std	Std	Std
TFT colour-screen trip computer, including trip timer, fuel used, seatbelt warning & outside temperature	-	-	-	Opt2	Opt2	Opt2	Opt2	-

**The declared fuel consumption and CO₂ emissions figures were achieved during technical laboratory testing in accordance with the legislated technical specifications (SANS 2010: 2006/ECE R101: 2005 as last amended) and validated and approved by the UK Vehicle Certification Authority (VCA). Fuel consumption and CO₂ emissions figures are used to compare different vehicle types under uniform conditions, and are not necessarily indicative of real-life driving conditions. Note that the actual fuel consumption and emissions levels will depend on many factors and are directly affected by the length of the journey; number of passengers and the amount of luggage carried; individual driving style; road conditions; weather conditions; vehicle age, mileage, condition and standard of maintenance; use of vehicle features such as air conditioning; and any modifications to the vehicle. Your fuel economy will vary based on these and other factors and, for these reasons, many drivers may not achieve the EU fuel economy figures in day-to-day driving, although the vehicle is technically capable of doing so.



Go Further

	Hatch							
	1.0 EcoBoost Ambiente	1.0 EcoBoost Ambiente Auto	1.5 TDCi Ambiente	1.0 EcoBoost Trend	1.0 EcoBoost Trend Auto	1.5 EcoBoost Trend	1.5 EcoBoost Trend Auto	1.5 TDCi Trend
Comfort and Convenience								
Manual airconditioning	Std	Std	Std	Std	Std	Std	Std	Std
Dual Electronic Air-Temperature Control (DEATC)	-	-	-	Opt3	Opt3	Opt3	Opt3	Opt3
Centre console with adjustable cup holders & 12V	Std	Std	Std	-	-	-	-	-
Centre console with adjustable cup holders, 12V (2) & leather* armrest	-	-	-	Std	Std	Std	Std	Std
Cruise control with speed limiter	-	-	-	Std	Std	Std	Std	Std
Leather*-trimmed gearknob	-	-	-	Std	Std	Std	Std	Std
Easy Fuel capless refuelling system with misfuel inhibitor	Std	Std	Std	Std	Std	Std	Std	Std
Heated rear window	Std	Std	Std	Std	Std	Std	Std	Std
In-Car Entertainment (ICE)								
Ford audio with 6 speakers & 4.2" dot-matrix screen	Std	Std	Std	Std	Std	Std		Std
Ford audio with 6 speakers & 4.2" TFT colour screen	-	-	-	Opt2	Opt2	Opt2	Opt2	-
Ford SYNC® with Bluetooth® & Voice Control	Std	Std	Std	Std	Std	Std	Std	Std
Ford SYNC®3 with Touchscreen, Bluetooth®, Voice Control & Navigation	-	-	-	Opt2	Opt2	Opt2	Opt2	-
2 USB ports, Bluetooth® audio & Aux input	Std	Std	Std	Std	Std	Std	Std	Std
Steering-wheel-mounted audio controls	Std	Std	Std	Std	Std	Std	Std	Std
Seating								
Cloth seats	Std	Std	Std	Std	Std	Std	Std	Std
6-way manually adjustable front seat (driver)	Std	Std	Std	Std	Std	Std	Std	Std
4-way manually adjustable front seat (passenger)	Std	Std	Std	Std	Std	Std	Std	Std
Front seatback pocket (driver & passenger)	-	-	-	Std	Std	Std	Std	Std
60:40 split rear seats that fold 100% flat	Std	Std	Std	Std	Std	Std	Std	Std
Safety and Security								
Dual front & side airbags	Std	Std	Std	Std	Std	Std	Std	Std
Curtain airbags	-	-	-	Std	Std	Std	Std	Std
Child-proof rear door locks (power)	-	-	-	Std	Std	Std	Std	Std
Ford MyKey®	Std	Std	Std	Std	Std	Std	Std	Std
Drive-away locking	Std	Std	Std	Std	Std	Std	Std	Std
Anti-lock Braking System (ABS) & Electronic Brakeforce Distribution (EBD)	Std	Std	Std	Std	Std	Std	Std	Std
Electronic Stability Programme (ESP) with Traction Control	Std	Std	Std	Std	Std	Std	Std	Std
Hill Launch Assist (HLA)	Std	Std	Std	Std	Std	Std	Std	Std
Active Park Assist: parking space measurement system with perpendicular & parallel parking	-	-	-	Opt2	Opt2	Opt2	Opt2	-
Rear-view camera with front & rear parking sensors	-	-	-	Opt2	Opt2	Opt2	Opt2	-
Lane Departure Warning with Lane Keeping Aid	-	-	-	Opt2	Opt2	Opt2	Opt2	-
Active City Stop	-	-	-	Opt2	Opt2	Opt2	Opt2	-
Interior mirror: auto dimming	-	-	-	Opt2	Opt2	Opt2	Opt2	-
Immobiliser	Std	Std	Std	Std	Std	Std	Std	Std
Remote central locking	Std	Std	Std	Std	Std	Std	Std	Std
Halogen projector headlights	Std	Std	Std	Std	Std	Std	Std	Std
Adaptive Bi-xenon headlamps	-	-	-	Opt3	Opt3	Opt3	Opt3	Opt3
Daytime running lights: LED	-	-	-	Opt3	Opt3	Opt3	Opt3	Opt3
Headlamp jet wash	-	-	-	Opt3	Opt3	Opt3	Opt3	Opt3
Follow-me-home headlamp: auto	-	-	-	Opt2	Opt2	Opt2	Opt2	-
Auto headlamp: on/off	-	-	-	Opt2	Opt2	Opt2	Opt2	-
Auto high-beam control	-	-	-	Opt2	Opt2	Opt2	Opt2	-
Manual headlamp levelling	Std	Std	Std	Std	Std	Std	Std	Std
Auto headlamp levelling	-	-	-	Opt3	Opt3	Opt3	Opt3	Opt3
Front power windows: one-touch down	Std	Std	Std	-	-	-	-	-
Front & rear power windows: one-touch up/down with global open/close	-	-	-	Std	Std	Std	Std	Std
Front wipers: auto adjustment with rain sensor	-	-	-	Opt2	Opt2	Opt2	Opt2	-
ISOFIX child-seat anchors (outboard seats – 2)	Std	Std	Std	Std	Std	Std	Std	Std
Ford PROTECT								
Service intervals	20 000km	20 000km	20 000km	20 000km	20 000km	20 000km	20 000km	20 000km
Comprehensive Warranty	4-yr/120 000km	4-yr/120 000km	4-yr/120 000km	4-yr/120 000km	4-yr/120 000km	4-yr/120 000km	4-yr/120 000km	4-yr/120 000km
Service Plan	4-yr/80 000km	4-yr/80 000km	4-yr/80 000km	4-yr/80 000km	4-yr/80 000km	4-yr/80 000km	4-yr/80 000km	4-yr/80 000km
Roadside Assistance	3-yr/unlimited km	3-yr/unlimited km	3-yr/unlimited km	3-yr/unlimited km	3-yr/unlimited km	3-yr/unlimited km	3-yr/unlimited km	3-yr/unlimited km
Corrosion Warranty	5-yr/unlimited km	5-yr/unlimited km	5-yr/unlimited km	5-yr/unlimited km	5-yr/unlimited km	5-yr/unlimited km	5-yr/unlimited km	5-yr/unlimited km

Options (opt.) mentioned in specification sheet are available as part of a 'Pack'. Features may not be purchased separately.

Opt1 - Ambiente wheel

Opt2 - Trend Driver Assistance Pack, not available on TDCi engines.

Opt3 - Trend Styling Pack (5-door only)

*Leather is a combination of leather and high-quality, durable materials.

The Trend Driver Assistance Pack and Trend Styling Pack has added features from MY2017.5. Contact your local Dealer for more information, as certain FOCUS Trend derivatives still has Trend derivatives with the none updated pack content.

Ford reserves the right, subject to all applicable laws, to discontinue or change features and other specification either temporarily or permanently without incurring any liability to any prospective purchaser or purchasers.

Ford PROTECT

Service Plan – Covers all scheduled servicing, except friction materials, i.e. brake pads and wiper blades.

Consult the vehicle handbook, www.ford.co.za or your nearest Ford Dealer for more information regarding Ford PROTECT plans and products. Printed March 2018.



Go Further

NEW FOCUS ST

	Hatch	
	ST1	ST3
Engine and Transmission		
2.0l GTDi 4-cylinder EcoBoost	Std	Std
Maximum power output (kW @ rpm)	184 @ 5500 ¹	184 @ 5500 ¹
Maximum torque (Nm @ rpm)	360 @ 2000 - 4500 ¹	360 @ 2000 - 4500 ¹
6-speed manual transmission	Std	Std
Auto-Stop/Start	Std	Std
Ride and Handling		
Sports tuned suspension	Std	Std
18" x 8" Alloy wheels with 235/40 R18 tyres	Std	Std
19" Alloy wheels (235/35 R19) & red callipers	-	Opt
Deflation detection system	Std	Std
Torque Vectoring Control	Std	Std
Spare wheel – mini: 16" steel	Std	Std
Locking wheel nuts	Std	Std
Performance and Economy		
Acceleration: 0-100 km/h (secs)	6.5	6.5
Max speed (km/h)	248	248
Fuel economy: combined cycle** (l/100km)	6.8 ²	6.8 ²
CO ₂ emissions** (g/km)	159 ²	159 ²
Emission level	Euro4	Euro4
Fuel tank capacity (l)	62	62
Ford Easy Fuel capless refuelling system ³	Std	Std
Active grille shutters	Std	Std
Ford EcoMode (driver information system)	Std	Std
Exterior		
Sports body kit ⁴	Std	Std
Sunroof: power tilt-and-slide	-	Opt
Rear spoiler: sports body colour	Std	Std
Adaptive Bi-xenon headlamps with headlamp jet-wash, LED Daytime Running Lights (DRL) & static cornering lights	-	Std
Auto headlamps	-	Std
Front fog lamps	Std	Std
Rain-sensing wipers	-	Std
Rear intermittent wash/wipe	Std	Std
Power-adjustable heated mirrors with side indicators	Std	-
Power-adjustable auto-folding heated mirrors with side indicators	-	Std
Follow-me-home headlamps	-	Std
Power windows – front & rear: one-touch lowering/closing and global closing	Std	Std
Rear LED tail light	-	Std
Dual centre exhaust	Std	Std
Safety and Security		
Driver & passenger: individual single-stage front airbags, side & curtain airbags	Std	Std
Anti-lock Braking System (ABS) with Electronic Brakeforce Distribution (EBD)	Std	Std
Electronic Stability Programme (ESP) with Emergency Brake Assist (EBA) & Traction Control	Std	Std
Emergency brake lights (automatic flashing of brake lights under heavy braking)	Std	Std
Front seatbelts: 3-point active seatbelts with pre-tensioners	Std	Std
Rear parking sensors	Std	Std
Rear-view camera	-	Std

**The declared fuel consumption and CO₂ emissions figures were achieved during technical laboratory testing in accordance with the legislated technical specifications (SANS 20101: 2006/ECE R101: 2005 as last amended) and validated and approved by the UK Vehicle Certification Authority (VCA). Fuel consumption and CO₂ emissions figures are used to compare different vehicle types under uniform conditions, and are not necessarily indicative of real-life driving conditions. Note that the actual fuel consumption and emissions levels will depend on many factors and are directly affected by the length of the journey; number of passengers and the amount of luggage carried; individual driving style; road conditions; weather conditions; vehicle age, mileage, condition and standard of maintenance; use of vehicle features such as air conditioning; and any modifications to the vehicle. Your fuel economy will vary based on these and other factors and, for these reasons, many drivers may not achieve the EU fuel economy figures in day-to-day driving, although the vehicle is technically capable of doing so.



Go Further

Hatch

ST1

ST3

Safety and Security (continued)

Driver & front passenger Beltminder	Std	Std
Hill Launch Assist (HLA)	Std	Std
Keyless entry	-	Std
Remote central locking	Std	Std
Thatcham alarm	Std	Std
Immobiliser: passive anti-theft system	Std	Std
Ford MyKey®	Std	Std
Drive-away locking	Std	Std

Comfort and Convenience

Airconditioning: manual	Std	-
Airconditioning: dual-zone climate control	-	Std
ST front door scuff plates	Std	Std
ST front & rear carpet mats	-	Std
Ford Power Start button	Std	Std
Driver & passenger illuminated vanity mirror	Std	Std
Electric Power-Assisted Steering (EPAS)	Std	Std
Cruise control, including speed-limit function & steering-wheel control	Std	Std
4-spoke leather*-wrapped ST steering wheel	Std	Std
Sports Alloy pedal covers	Std	Std
Leather*-trimmed gearknob & handbrake grip	Std	Std
Ambient interior LED lighting	Std	Std
Rear-view mirror: auto-dimming	-	Std
RECARO® cloth sport seats: front & rear	Std	-
RECARO® leather* sport seats: front & rear	-	Std
Driver & passenger seat: 4-way manually adjustable	Std	-
8-way driver & passenger power-adjustable heated seats	-	Std
Rear seat – 60:40 split back & cushion	Std	Std
Illuminated door sills: driver & passenger	-	Std

In-Car Entertainment (ICE)

Radio/CD, external auxiliary input for external music device ⁵ , remote audio & multifunction display controls, 6 speakers	Std	-
Sony audio system with 9 speakers & 8-inch Touchscreen	-	Std
Ford SYNC® with Bluetooth® ⁶ & Voice Control with 2 USB connectivity ports	Std	-
Ford SYNC®3 with Touchscreen, Bluetooth® & Voice Control	-	Std
Navigation	-	Opt
Multifunction display, including distance to empty, average speed, average fuel consumption & outside air temperature	Std	Std
Steering-wheel-mounted audio controls	Std	Std
Two 12V power points with Aux input & 2 USB ports	-	Std
Two 12V power points & 2 USB ports	Std	-

1. All performance data for petrol models measured using 95RON fuel. 2. Figures obtained from controlled tests using ADR 81/02 (combined). **Actual fuel consumption and emissions will depend on many factors, including driving habits, prevailing conditions and your vehicle's equipment, condition and use. 3. Capless refuelling with misfuel inhibitor. 4. Including: front bumper skirt, rear bumper skirt, side skirts, sports grille, large rear spoiler. 5. Connection cable sold separately. 6. Bluetooth® is a registered trademark of Bluetooth SIG Inc, and is used under licence. Please refer to www.ford.co.za for mobile phone compatibility.

*Leather is a combination of leather and high-quality, durable materials.
Contact your local Dealer, as certain **FOCUS ST3** with SYNC®2 are still available.

Ford **PROTECT**
Each **FOCUS ST** model comes standard with a 4-yr/120 000km Comprehensive Warranty, a 3-yr/unlimited km Roadside Assistance plan, a 5-yr/90 000km Service Plan and a 5-yr/unlimited km Corrosion Warranty. Service intervals for the **FOCUS ST** are every 20 000km.

Ford may, subject to all applicable laws, discontinue or change features and other specifications either temporarily or permanently, which changes will be communicated to the Ford Dealer Network.

Consult the vehicle handbook, www.ford.co.za or your nearest Ford Dealer for more information regarding Ford **PROTECT** plans and products. Printed March 2018.



Go Further